

Datasheet for ABIN7145246
anti-BBS7 antibody (AA 289-393)[Go to Product page](#)

1 Image

Overview

Quantity:	100 µg
Target:	BBS7
Binding Specificity:	AA 289-393
Reactivity:	Human
Host:	Rabbit
Clonality:	Polyclonal
Conjugate:	This BBS7 antibody is un-conjugated
Application:	ELISA, Immunofluorescence (IF)

Product Details

Immunogen:	Recombinant Human Bardet-Biedl syndrome 7 protein (289-393AA)
Isotype:	IgG
Cross-Reactivity:	Human
Purification:	>95%, Protein G purified

Target Details

Target:	BBS7
Alternative Name:	BBS7 (BBS7 Products)
Background:	Background: The BBSome complex is thought to function as a coat complex required for sorting of specific membrane proteins to the primary cilia. The BBSome complex is required for

Target Details

ciliogenesis but is dispensable for centriolar satellite function. This ciliogenic function is mediated in part by the Rab8 GDP/GTP exchange factor, which localizes to the basal body and contacts the BBSome. Rab8(GTP) enters the primary cilium and promotes extension of the ciliary membrane. Firstly the BBSome associates with the ciliary membrane and binds to RAB3IP/Rabin8, the guanosyl exchange factor (GEF) for Rab8 and then the Rab8-GTP localizes to the cilium and promotes docking and fusion of carrier vesicles to the base of the ciliary membrane. The BBSome complex, together with the LTZL1, controls SMO ciliary trafficking and contributes to the sonic hedgehog (SHH) pathway regulation. Required for proper BBSome complex assembly and its ciliary localization.

Aliases: Bardet Biedl syndrome 7 protein antibody, Bardet-Biedl syndrome 7 antibody, Bardet-Biedl syndrome 7 protein antibody, BBS2 like 1 antibody, BBS2 like protein 1 antibody, BBS2-like protein 1 antibody, BBS2L1 antibody, BBS7 antibody, BBS7_HUMAN antibody, FLJ10715 antibody

UniProt: [Q8IWZ6](#)

Pathways: [Hedgehog Signaling](#)

Application Details

Application Notes: Recommended dilution: IF:1:50-1:200,

Restrictions: For Research Use only

Handling

Format: Liquid

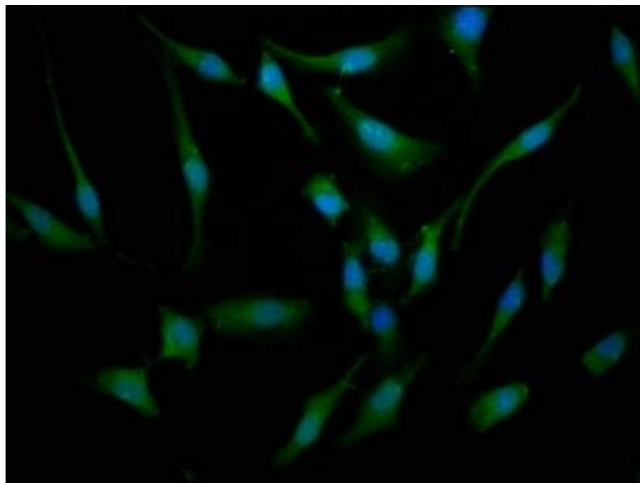
Buffer: Preservative: 0.03 % Proclin 300
Constituents: 50 % Glycerol, 0.01M PBS, pH 7.4

Preservative: ProClin

Precaution of Use: This product contains ProClin: a POISONOUS AND HAZARDOUS SUBSTANCE which should be handled by trained staff only.

Storage: -20 °C,-80 °C

Storage Comment: Upon receipt, store at -20°C or -80°C. Avoid repeated freeze.



Immunofluorescence

Image 1. Immunofluorescence staining of HeLa cells with ABIN7145246 at 1:133, counter-stained with DAPI. The cells were fixed in 4% formaldehyde, permeabilized using 0.2% Triton X-100 and blocked in 10% normal Goat Serum. The cells were then incubated with the antibody overnight at 4°C. The secondary antibody was Alexa Fluor 488-conjugated AffiniPure Goat Anti-Rabbit IgG(H+L).