

Datasheet for ABIN7145293  
**anti-BCL2L1 antibody**



[Go to Product page](#)

3 Images

## Overview

Quantity:	100 µg
Target:	BCL2L1
Reactivity:	Human
Host:	Mouse
Clonality:	Monoclonal
Conjugate:	This BCL2L1 antibody is un-conjugated
Application:	Western Blotting (WB), Immunohistochemistry (IHC), ELISA

## Product Details

Immunogen:	Recombinant Human Bcl-2-like protein 1 protein
Clone:	3D1C1
Isotype:	IgG1, IgG1 kappa
Cross-Reactivity:	Human
Purification:	Protein G purified

## Target Details

Target:	BCL2L1
Alternative Name:	BCL2L1 ( <a href="#">BCL2L1 Products</a> )
Background:	Background: Potent inhibitor of cell death. Inhibits activation of caspases. Appears to regulate cell death by blocking the voltage-dependent anion channel (VDAC) by binding to it and

## Target Details

preventing the release of the caspase activator, CYC1, from the mitochondrial membrane. Also acts as a regulator of G2 checkpoint and progression to cytokinesis during mitosis.

Aliases: Bcl2-L-1,Apoptosis regulator Bcl-X,BCL2L1,BCL2L, BCLX

UniProt: [Q07817](#)

Pathways: [Apoptosis, Negative Regulation of intrinsic apoptotic Signaling](#)

## Application Details

Application Notes: Recommended dilution:WB:1:500-1:5000,IHC:1:50-1:500,

Restrictions: For Research Use only

## Handling

Format: Liquid

Buffer: Preservative: 0.03 % Proclin 300  
Constituents: 50 % Glycerol, 0.01M PBS, PH 7.4

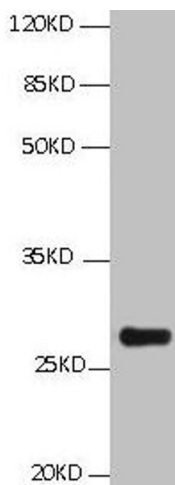
Preservative: ProClin

Precaution of Use: This product contains ProClin: a POISONOUS AND HAZARDOUS SUBSTANCE which should be handled by trained staff only.

Storage: -20 °C,-80 °C

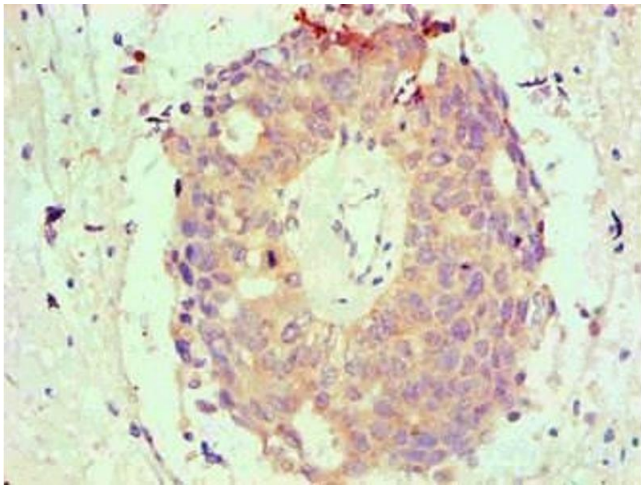
Storage Comment: Upon receipt, store at -20°C or -80°C. Avoid repeated freeze.

## Images



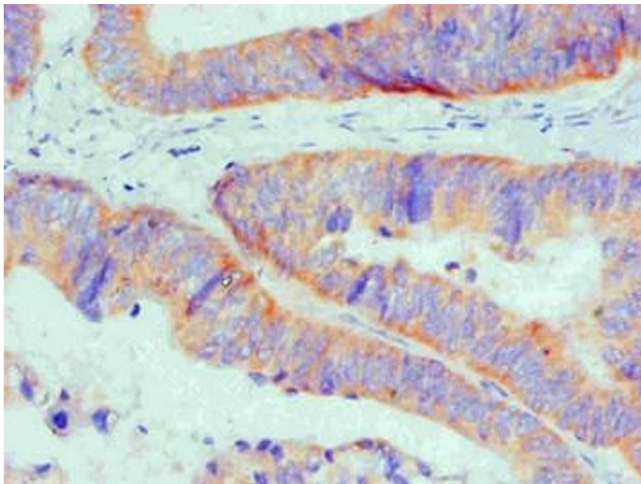
### Western Blotting

**Image 1.** All Lanes: Mouse anti BCL2L1 Monoclonal antibody at 1 µg/mL Lane 1: HepG2 whole cell lysate Secondary Goat polyclonal to Mouse IgG at 1/5000 dilution Predicted band size: 26,27,19kd Observed band size: 26KD



#### Immunohistochemistry

**Image 2.** Immunohistochemical of paraffin-embedded Human endometrium tissue using ABIN7145293 at dilution of 1:200



#### Immunohistochemistry

**Image 3.** Immunohistochemical of paraffin-embedded Human Colon cancer tissue using ABIN7145293 at dilution of 1:200