

Datasheet for ABIN7145294
anti-BCL2L1 antibody (AA 1-209)[Go to Product page](#)

4 Images

Overview

Quantity:	100 µg
Target:	BCL2L1
Binding Specificity:	AA 1-209
Reactivity:	Human
Host:	Rabbit
Clonality:	Polyclonal
Conjugate:	This BCL2L1 antibody is un-conjugated
Application:	Western Blotting (WB), Immunohistochemistry (IHC), Immunofluorescence (IF), ELISA

Product Details

Immunogen:	Recombinant Human Bcl-2-like protein 1 protein (1-209AA)
Isotype:	IgG
Cross-Reactivity:	Human, Mouse
Purification:	>95%, Protein G purified

Target Details

Target:	BCL2L1
Alternative Name:	BCL2L1 (BCL2L1 Products)
Background:	Background: Potent inhibitor of cell death. Inhibits activation of caspases. Appears to regulate cell death by blocking the voltage-dependent anion channel (VDAC) by binding to it and

Target Details

preventing the release of the caspase activator, CYC1, from the mitochondrial membrane. Also acts as a regulator of G2 checkpoint and progression to cytokinesis during mitosis. Ref.17 Ref.19 Ref.20 Isoform Bcl-X(L) also regulates presynaptic plasticity, including neurotransmitter release and recovery, number of axonal mitochondria as well as size and number of synaptic vesicle clusters. During synaptic stimulation, increases ATP availability from mitochondria through regulation of mitochondrial membrane ATP synthase F1F0 activity and regulates endocytic vesicle retrieval in hippocampal neurons through association with DMN1L and stimulation of its GTPase activity in synaptic vesicles.

Aliases: Apoptosis regulator Bcl X antibody, Apoptosis regulator Bcl-X antibody, Apoptosis regulator BclX antibody, B cell lymphoma 2 like antibody, B2CL1_HUMAN antibody, Bcl 2 like 1 protein antibody, Bcl X antibody, Bcl xL antibody, BCL XL/S antibody, Bcl xS antibody, Bcl-2-like protein 1 antibody, Bcl2 Like 1 antibody, Bcl2 related gene antibody, Bcl2-L-1 antibody, BCL2L antibody, Bcl2l1 antibody, BCLX antibody, BclXL antibody, BclXs antibody, DKFZp781P2092 antibody, PPP1R52 antibody, Protein phosphatase 1 regulatory subunit 52 antibody

UniProt: [Q07817](#)

Pathways: [Apoptosis](#), [Negative Regulation of intrinsic apoptotic Signaling](#)

Application Details

Application Notes: Recommended dilution: WB:1:500-1:5000, IHC:1:200-1:500, IF:1:50-1:200,

Restrictions: For Research Use only

Handling

Format: Liquid

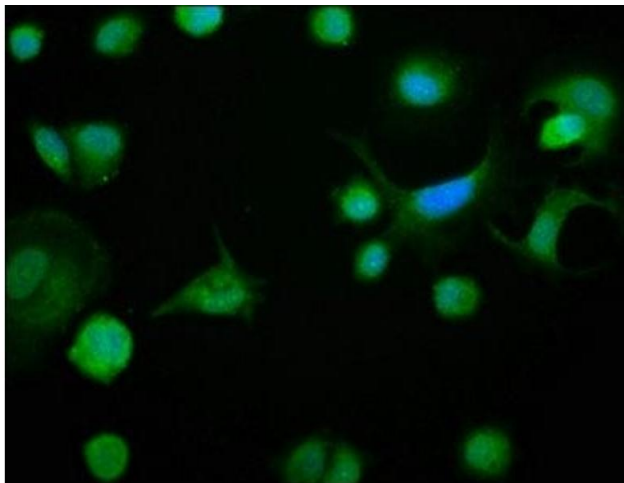
Buffer: Preservative: 0.03 % Proclin 300
Constituents: 50 % Glycerol, 0.01M PBS, PH 7.4

Preservative: ProClin

Precaution of Use: This product contains ProClin: a POISONOUS AND HAZARDOUS SUBSTANCE which should be handled by trained staff only.

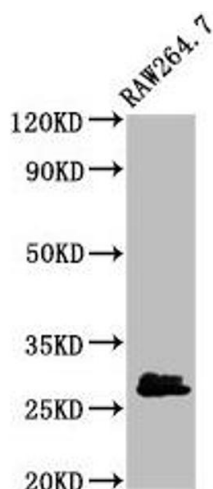
Storage: -20 °C,-80 °C

Storage Comment: Upon receipt, store at -20°C or -80°C. Avoid repeated freeze.



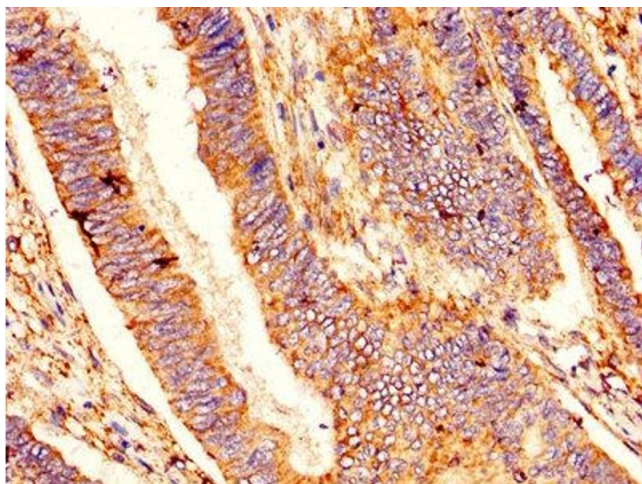
Immunofluorescence

Image 1. Immunofluorescence staining of MCF-7 cells with ABIN7145294 at 1:133, counter-stained with DAPI. The cells were fixed in 4% formaldehyde, permeabilized using 0.2% Triton X-100 and blocked in 10% normal Goat Serum. The cells were then incubated with the antibody overnight at 4°C. The secondary antibody was Alexa Fluor 488-conjugated AffiniPure Goat Anti-Rabbit IgG(H+L).



Western Blotting

Image 2. Western Blot Positive WB detected in: RAW264.7 whole cell lysate All lanes: BCL2L1 antibody at 2.7 µg/mL Secondary Goat polyclonal to rabbit IgG at 1/50000 dilution Predicted band size: 27, 19, 26 kDa Observed band size: 27 kDa



Immunohistochemistry

Image 3. IHC image of ABIN7145294 diluted at 1:400 and staining in paraffin-embedded human colon cancer performed on a Leica Bond™ system. After dewaxing and hydration, antigen retrieval was mediated by high pressure in a citrate buffer (pH 6.0). Section was blocked with 10% normal goat serum 30min at RT. Then primary antibody (1% BSA) was incubated at 4°C overnight. The primary is detected by a biotinylated secondary antibody and visualized using an HRP conjugated SP system.

Please check the [product details page](#) for more images. Overall 4 images are available for ABIN7145294.