



[Go to Product page](#)

Datasheet for ABIN7145302
anti-BIM antibody (AA 1-198)

3 Images

Overview

Quantity:	100 µg
Target:	BIM (BCL2L11)
Binding Specificity:	AA 1-198
Reactivity:	Human
Host:	Rabbit
Clonality:	Polyclonal
Conjugate:	This BIM antibody is un-conjugated
Application:	Immunohistochemistry (IHC), ELISA, Immunofluorescence (IF)

Product Details

Immunogen:	Recombinant Human Bcl-2-like protein 11 protein (1-198AA)
Isotype:	IgG
Cross-Reactivity:	Human
Purification:	>95%, Protein G purified

Target Details

Target:	BIM (BCL2L11)
Alternative Name:	BCL2L11 (BCL2L11 Products)
Background:	Background: Induces apoptosis and anoikis. Isoform BimL is more potent than isoform BimEL. Isoform Bim-alpha1, isoform Bim-alpha2 and isoform Bim-alpha3 induce apoptosis, although

Target Details

less potent than isoform BimEL, isoform BimL and isoform BimS. Isoform Bim-gamma induces apoptosis. Isoform Bim-alpha3 induces apoptosis possibly through a caspase-mediated pathway. Isoform BimAC and isoform BimABC lack the ability to induce apoptosis.

Aliases: BCL2 like 11 antibody, B2L11_HUMAN antibody, BAM antibody, Bcl 2 interacting protein Bim antibody, Bcl 2 related ovarian death agonist antibody, Bcl-2-like protein 11 antibody, BCL2 interacting mediator of cell death antibody, BCL2 like 11 (apoptosis facilitator) antibody, BCL2 like protein 11 antibody, Bcl2-interacting mediator of cell death antibody, Bcl2-L-11 antibody, Bcl2l11 antibody, BIM alpha6 antibody, BIM antibody, BIM beta6 antibody, BIM beta7 antibody, BimEL antibody, BimL antibody, BOD antibody

UniProt: [O43521](#)

Pathways: [PI3K-Akt Signaling](#), [Neurotrophin Signaling Pathway](#), [Tube Formation](#), [Positive Regulation of Endopeptidase Activity](#)

Application Details

Application Notes: Recommended dilution: IHC:1:20-1:200, IF:1:50-1:200,

Restrictions: For Research Use only

Handling

Format: Liquid

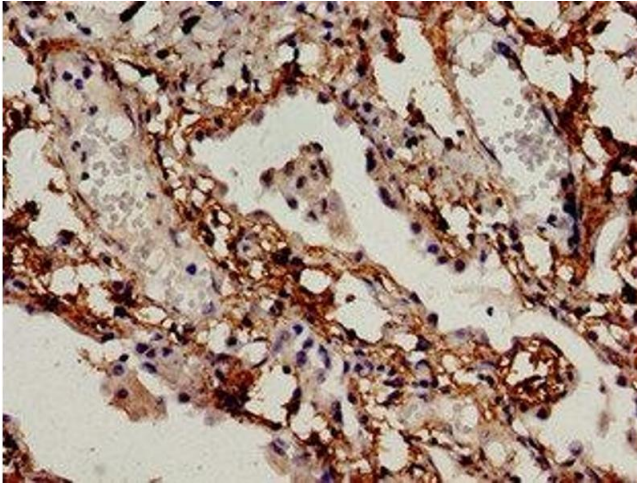
Buffer: Preservative: 0.03 % Proclin 300
Constituents: 50 % Glycerol, 0.01M PBS, pH 7.4

Preservative: ProClin

Precaution of Use: This product contains ProClin: a POISONOUS AND HAZARDOUS SUBSTANCE which should be handled by trained staff only.

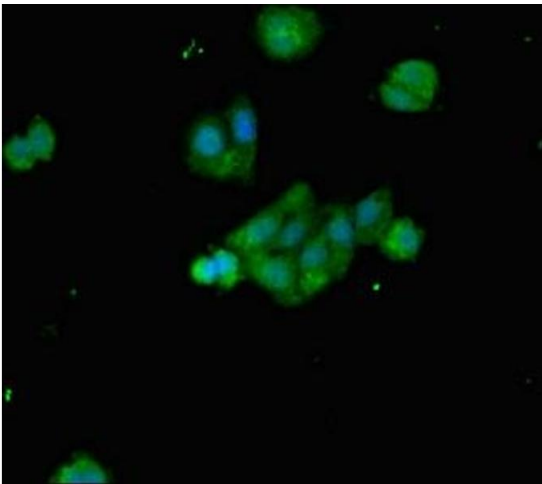
Storage: -20 °C,-80 °C

Storage Comment: Upon receipt, store at -20°C or -80°C. Avoid repeated freeze.



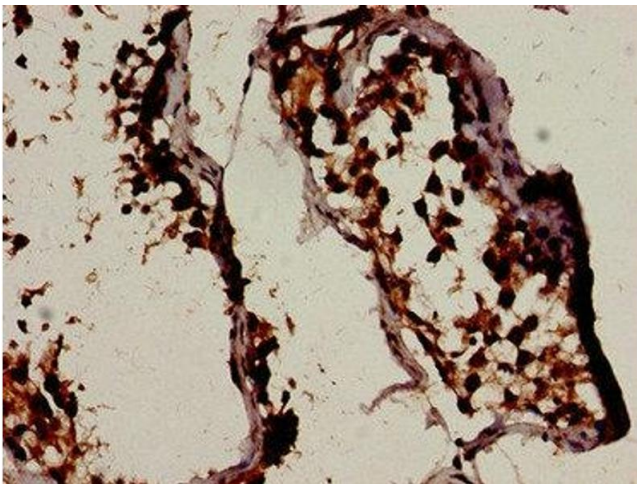
Immunocytochemistry

Image 1. Immunocytochemistry analysis of human lung cancer using ABIN7145302 at dilution of 1:100



Immunofluorescence

Image 2. Immunofluorescent analysis of HepG2 cells using ABIN7145302 at dilution of 1:100 and Alexa Fluor 488-conjugated AffiniPure Goat Anti-Rabbit IgG(H+L)



Immunohistochemistry

Image 3. Immunohistochemistry analysis of human testis tissue using ABIN7145302 at dilution of 1:100