

Datasheet for ABIN7145307
anti-BCL2-Like 15 antibody (AA 1-163)



[Go to Product page](#)

2 Images

Overview

Quantity:	100 µL
Target:	BCL2-Like 15 (BCL2L5)
Binding Specificity:	AA 1-163
Reactivity:	Human
Host:	Rabbit
Clonality:	Polyclonal
Conjugate:	This BCL2-Like 15 antibody is un-conjugated
Application:	ELISA, Immunohistochemistry (IHC)

Product Details

Immunogen:	Recombinant Human Bcl-2-like protein 15 protein (1-163AA)
Isotype:	IgG
Cross-Reactivity:	Human
Purification:	Antigen Affinity Purified

Target Details

Target:	BCL2-Like 15 (BCL2L5)
Alternative Name:	BCL2L15 (BCL2L5 Products)
Background:	AC124698.1 antibody, B2L15_HUMAN antibody, Bcl-2-like protein 15 antibody, Bcl2-L-15 antibody, BCL2-like 15 antibody, Bcl2l15 antibody, Bfk antibody, C1orf178 antibody, FLJ22588

Target Details

antibody, Gm566 antibody, Pro apoptotic Bcl 2 protein antibody

UniProt: [Q5TBC7](#)

Application Details

Application Notes: Recommended dilution: IHC:1:20-1:200,

Restrictions: For Research Use only

Handling

Format: Liquid

Buffer: PBS with 0.02 % sodium azide, 50 % glycerol, pH 7.3.

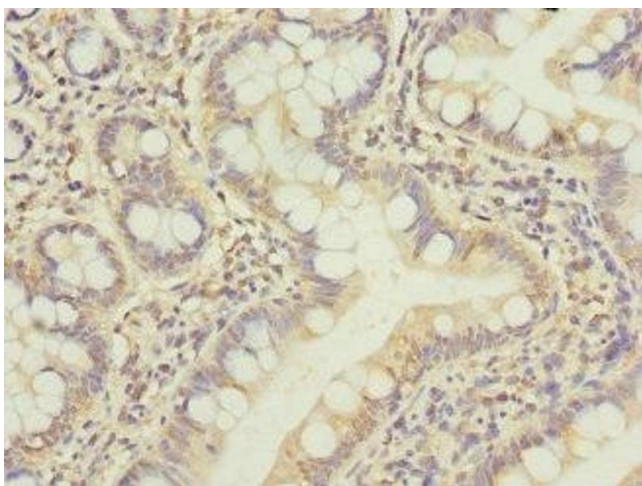
Preservative: Sodium azide

Precaution of Use: This product contains Sodium azide: a POISONOUS AND HAZARDOUS SUBSTANCE which should be handled by trained staff only.

Storage: -20 °C,-80 °C

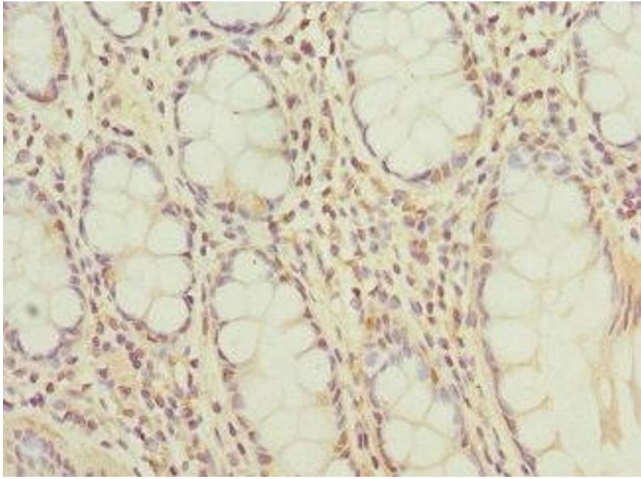
Storage Comment: Upon receipt, store at -20°C or -80°C. Avoid repeated freeze.

Images



Immunohistochemistry

Image 1. Immunohistochemistry of paraffin-embedded human small intestine tissue using ABIN7145307 at dilution of 1:100



Immunohistochemistry

Image 2. Immunohistochemistry of paraffin-embedded human colon cancer using ABIN7145307 at dilution of 1:100