

Datasheet for ABIN7145308
anti-BCL2L2 antibody (AA 2-193)



[Go to Product page](#)

2 Images

Overview

Quantity:	100 µg
Target:	BCL2L2
Binding Specificity:	AA 2-193
Reactivity:	Human
Host:	Rabbit
Clonality:	Polyclonal
Conjugate:	This BCL2L2 antibody is un-conjugated
Application:	Immunohistochemistry (IHC), ELISA

Product Details

Immunogen:	Recombinant Human Bcl-2-like protein 2 protein (2-193AA)
Isotype:	IgG
Cross-Reactivity:	Human
Purification:	>95%, Protein G purified

Target Details

Target:	BCL2L2
Alternative Name:	BCL2L2 (BCL2L2 Products)
Background:	Background: Promotes cell survival. Blocks dexamethasone-induced apoptosis. Mediates survival of postmitotic Sertoli cells by suppressing death-promoting activity of BAX.

Target Details

Aliases: Apoptosis regulator BCL W antibody, Apoptosis regulator Bcl-W antibody, B2CL2_HUMAN antibody, BCL 2 Like 2 antibody, Bcl 2 like 2 protein antibody, Bcl 2L2 antibody, BCL W antibody, Bcl-2-like protein 2 antibody, Bcl2 L2 antibody, BCL2 like 2 antibody, BCL2 like 2 protein antibody, Bcl2-L-2 antibody, Bcl2l2 antibody, BCLW antibody, KIAA0271 antibody, PPP1R51 antibody, Protein phosphatase 1 regulatory subunit 51 antibody

UniProt: [Q92843](#)

Application Details

Application Notes: Recommended dilution: IHC:1:20-1:200,

Restrictions: For Research Use only

Handling

Format: Liquid

Buffer: Preservative: 0.03 % Proclin 300
Constituents: 50 % Glycerol, 0.01M PBS, PH 7.4

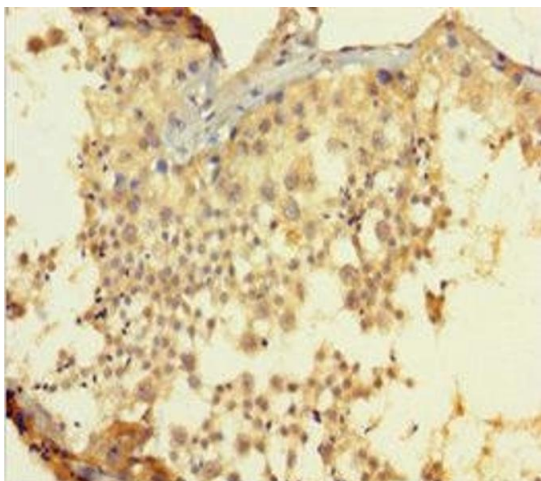
Preservative: ProClin

Precaution of Use: This product contains ProClin: a POISONOUS AND HAZARDOUS SUBSTANCE which should be handled by trained staff only.

Storage: -20 °C,-80 °C

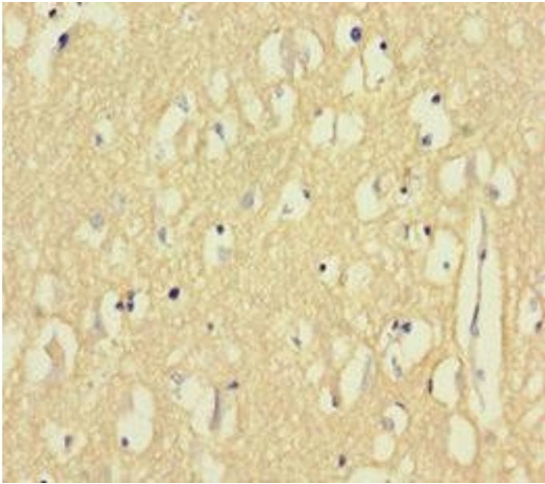
Storage Comment: Upon receipt, store at -20°C or -80°C. Avoid repeated freeze.

Images



Immunohistochemistry

Image 1. Immunohistochemistry of paraffin-embedded human testis tissue using ABIN7145308 at dilution of 1:100



Immunohistochemistry

Image 2. Immunohistochemistry of paraffin-embedded human brain tissue using ABIN7145308 at dilution of 1:100