

Datasheet for ABIN7145318  
**anti-BCL2A1 antibody (AA 1-175)**

## 2 Images

[Go to Product page](#)

## Overview

Quantity:	100 µg
Target:	BCL2A1
Binding Specificity:	AA 1-175
Reactivity:	Human
Host:	Rabbit
Clonality:	Polyclonal
Conjugate:	This BCL2A1 antibody is un-conjugated
Application:	ELISA, Immunohistochemistry (IHC), Immunofluorescence (IF)

## Product Details

Immunogen:	Recombinant Human Bcl-2-related protein A1 protein (1-175AA)
Isotype:	IgG
Cross-Reactivity:	Human
Purification:	>95%, Protein G purified

## Target Details

Target:	BCL2A1
Alternative Name:	BCL2A1 ( <a href="#">BCL2A1 Products</a> )
Background:	Background: Retards apoptosis induced by IL-3 deprivation. May function in the response of hemopoietic cells to external signals and in maintaining endothelial survival during infection (By

## Target Details

similarity). Can inhibit apoptosis induced by serum starvation in the mammary epithelial cell line HC11 (By similarity).

Aliases: ACC 1 antibody, ACC 2 antibody, B2LA1\_HUMAN antibody, Bcl 2 related protein A1 antibody, Bcl-2-like protein 5 antibody, Bcl-2-related protein A1 antibody, BCL2 related protein A1 antibody, Bcl2-L-5 antibody, BCL2A1 antibody, BCL2L5 antibody, BFL1 antibody, GRS antibody, HBPA1 antibody, Hematopoietic BCL2 related protein A1 antibody, Hemopoietic specific early response protein antibody, Hemopoietic-specific early response protein antibody, Protein BFL 1 antibody, Protein BFL-1 antibody, Protein GRS antibody

UniProt: [Q16548](#)

## Application Details

Application Notes: Recommended dilution: IHC:1:20-1:200, IF:1:50-1:200,

Restrictions: For Research Use only

## Handling

Format: Liquid

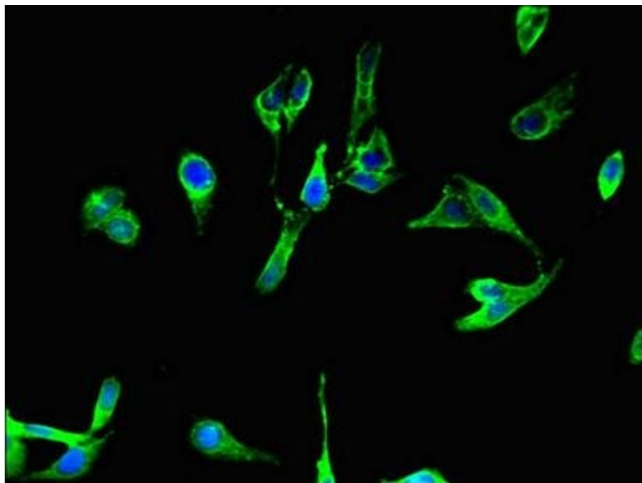
Buffer: Preservative: 0.03 % Proclin 300  
Constituents: 50 % Glycerol, 0.01M PBS, PH 7.4

Preservative: ProClin

Precaution of Use: This product contains ProClin: a POISONOUS AND HAZARDOUS SUBSTANCE which should be handled by trained staff only.

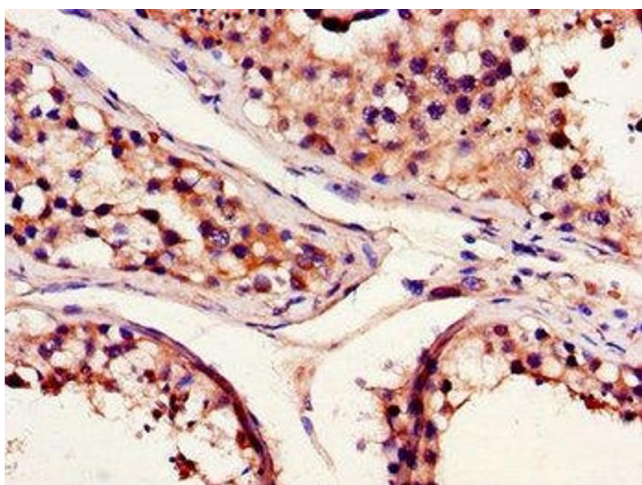
Storage: -20 °C,-80 °C

Storage Comment: Upon receipt, store at -20°C or -80°C. Avoid repeated freeze.



#### Immunofluorescence

**Image 1.** Immunofluorescent analysis of HeLa cells using ABIN7145318 at dilution of 1:100 and Alexa Fluor 488-conjugated AffiniPure Goat Anti-Rabbit IgG(H+L)



#### Immunohistochemistry

**Image 2.** Immunohistochemistry of paraffin-embedded human testis tissue using ABIN7145318 at dilution of 1:100