



[Go to Product page](#)

Datasheet for ABIN7145326
anti-C9orf89 antibody (AA 1-183)

2 Images

Overview

Quantity:	100 µg
Target:	C9orf89
Binding Specificity:	AA 1-183
Reactivity:	Human
Host:	Rabbit
Clonality:	Polyclonal
Conjugate:	This C9orf89 antibody is un-conjugated
Application:	ELISA, Immunohistochemistry (IHC)

Product Details

Immunogen:	Recombinant Human Bcl10-interacting CARD protein (1-183AA)
Isotype:	IgG
Cross-Reactivity:	Human
Purification:	>95%, Protein G purified

Target Details

Target:	C9orf89
Alternative Name:	CARD19 (C9orf89 Products)
Background:	Background: Plays a role in inhibiting the effects of BCL10-induced activation of NF-kappa-B. May inhibit the phosphorylation of BCL10 in a CARD-dependent manner.

Target Details

Aliases: Bcl10 interacting protein with CARD protein antibody, Bcl10-interacting CARD protein antibody, BINCA_HUMAN antibody, BinCARD antibody, C9orf89 antibody, Chromosome 9 open reading frame 89 antibody

UniProt: [Q96LW7](#)

Application Details

Application Notes: Recommended dilution: IHC:1:20-1:200,

Restrictions: For Research Use only

Handling

Format: Liquid

Buffer: Preservative: 0.03 % Proclin 300
Constituents: 50 % Glycerol, 0.01M PBS, PH 7.4

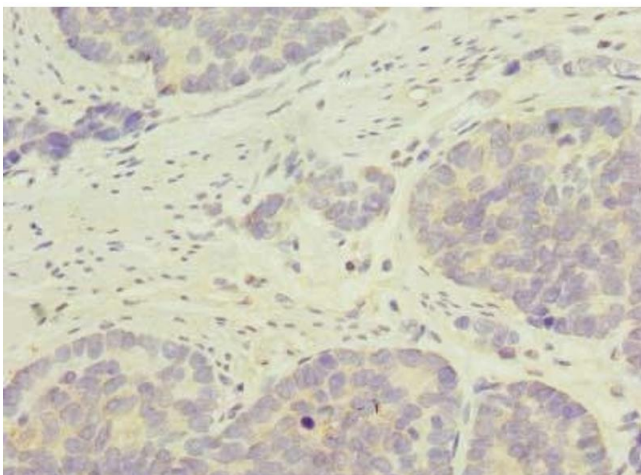
Preservative: ProClin

Precaution of Use: This product contains ProClin: a POISONOUS AND HAZARDOUS SUBSTANCE which should be handled by trained staff only.

Storage: -20 °C,-80 °C

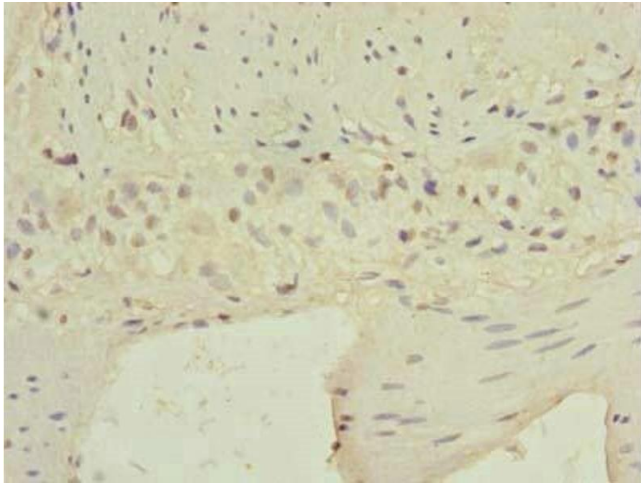
Storage Comment: Upon receipt, store at -20°C or -80°C. Avoid repeated freeze.

Images



Immunohistochemistry

Image 1. Immunohistochemistry of paraffin-embedded human gastric cancer using ABIN7145326 at dilution of 1:100



Immunohistochemistry

Image 2. Immunohistochemistry of paraffin-embedded human small intestine tissue using ABIN7145326 at dilution of 1:100