

Datasheet for ABIN7145471
anti-CRYGS antibody (AA 1-178)



[Go to Product page](#)

3 Images

Overview

Quantity:	100 µL
Target:	CRYGS
Binding Specificity:	AA 1-178
Reactivity:	Human
Host:	Rabbit
Clonality:	Polyclonal
Conjugate:	This CRYGS antibody is un-conjugated
Application:	Western Blotting (WB), ELISA, Immunohistochemistry (IHC)

Product Details

Immunogen:	Recombinant Human Beta-crystallin S protein (1-178AA)
Isotype:	IgG
Cross-Reactivity:	Human, Mouse
Purification:	Antigen Affinity Purified

Target Details

Target:	CRYGS
Alternative Name:	CRYGS (CRYGS Products)
Background:	Background: Crystallins are the dominant structural components of the vertebrate eye lens. Aliases: AI327013 antibody, Beta-crystallin S antibody, CRBS_HUMAN antibody, CRYG8

Target Details

antibody, crygs antibody, Crystallin, gamma 8 antibody, Crystallin, gamma polypeptide 8 antibody, Crystallin, gamma S antibody, CTRCT20 antibody, Gamma crystallin S antibody, Gamma S crystallin antibody, Gamma-crystallin S antibody, Gamma-S-crystallin antibody, Opacity due to poor secondary fiber cell junction, recessive nuclear cataract antibody, Opj antibody, rncat antibody

UniProt: [P22914](#)

Application Details

Application Notes: Recommended dilution: WB:1:1000-1:5000, IHC:1:20-1:200,

Restrictions: For Research Use only

Handling

Format: Liquid

Buffer: PBS with 0.02 % sodium azide, 50 % glycerol, pH 7.3.

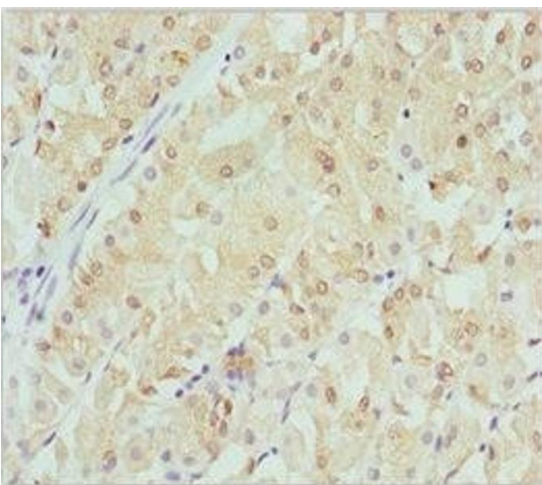
Preservative: Sodium azide

Precaution of Use: This product contains Sodium azide: a POISONOUS AND HAZARDOUS SUBSTANCE which should be handled by trained staff only.

Storage: -20 °C,-80 °C

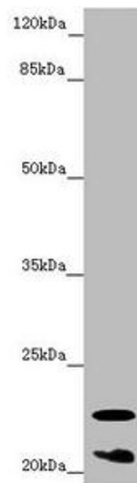
Storage Comment: Upon receipt, store at -20°C or -80°C. Avoid repeated freeze.

Images



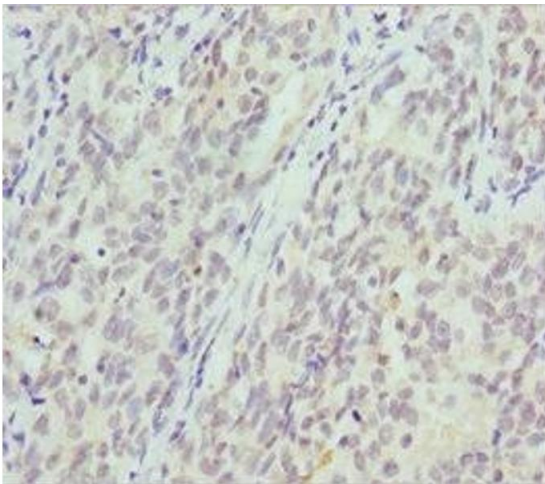
Immunohistochemistry

Image 1. Immunohistochemistry of paraffin-embedded human gastric cancer using ABIN7145471 at dilution of 1:100



Western Blotting

Image 2. Western blot All lanes: CRYGS antibody at 6.87 μ g/mL + Mouse eye tissue Secondary Goat polyclonal to rabbit IgG at 1/10000 dilution Predicted band size: 21 kDa Observed band size: 21, 23 kDa



Immunohistochemistry

Image 3. Immunohistochemistry of paraffin-embedded human lung cancer using ABIN7145471 at dilution of 1:100