



Datasheet for ABIN7145489
anti-ENO3 antibody (AA 7-432)



[Go to Product page](#)

2 Images

Overview

Quantity:	100 µg
Target:	ENO3
Binding Specificity:	AA 7-432
Reactivity:	Human
Host:	Rabbit
Clonality:	Polyclonal
Conjugate:	This ENO3 antibody is un-conjugated
Application:	ELISA, Immunohistochemistry (IHC), Immunofluorescence (IF)

Product Details

Immunogen:	Recombinant Human Beta-enolase protein (7-432AA)
Isotype:	IgG
Cross-Reactivity:	Human
Purification:	>95%, Protein G purified

Target Details

Target:	ENO3
Alternative Name:	ENO3 (ENO3 Products)
Background:	Background: Appears to have a function in striated muscle development and regeneration. Aliases: 2 phospho D glycerate hydro lyase antibody, 2 phospho D glycerate hydrolyase

Target Details

antibody, 2-phospho-D-glycerate hydro-lyase antibody, Beta enolase antibody, Beta-enolase antibody, ENO3 antibody, ENOB_HUMAN antibody, Enolase 3 (beta muscle) antibody, Enolase 3 antibody, Enolase3 antibody, GSD13 antibody, MSE antibody, Muscle specific enolase antibody, Muscle-specific enolase antibody, Skeletal muscle enolase antibody

UniProt: [P13929](#)

Application Details

Application Notes: Recommended dilution: IHC:1:20-1:200, IF:1:50-1:200,

Restrictions: For Research Use only

Handling

Format: Liquid

Buffer: Preservative: 0.03 % Proclin 300
Constituents: 50 % Glycerol, 0.01M PBS, PH 7.4

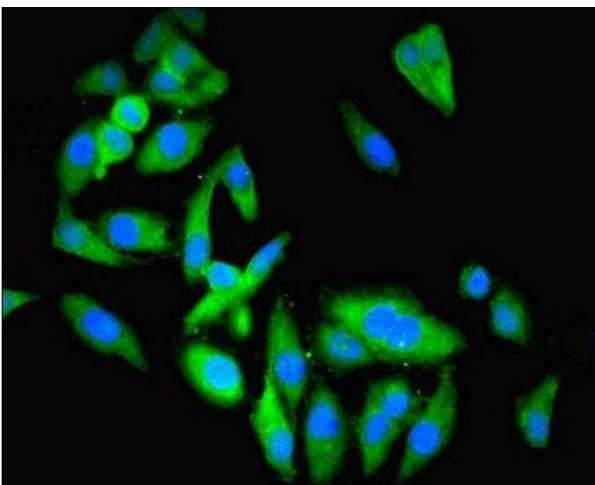
Preservative: ProClin

Precaution of Use: This product contains ProClin: a POISONOUS AND HAZARDOUS SUBSTANCE which should be handled by trained staff only.

Storage: -20 °C,-80 °C

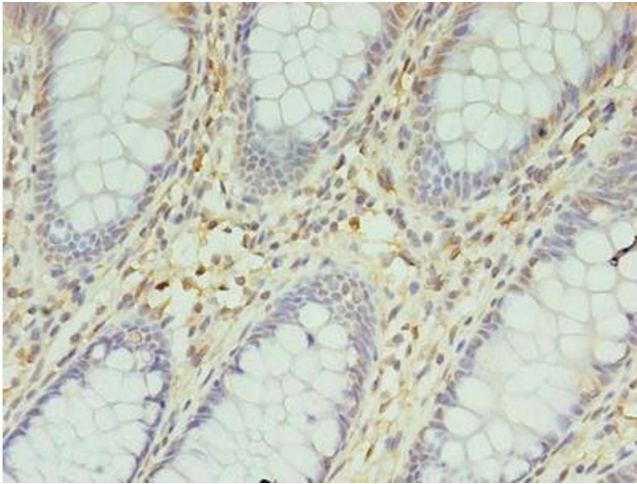
Storage Comment: Upon receipt, store at -20°C or -80°C. Avoid repeated freeze.

Images



Immunofluorescence

Image 1. Immunofluorescent analysis of HeLa cells using ABIN7145489 at dilution of 1:100 and Alexa Fluor 488-conjugated AffiniPure Goat Anti-Rabbit IgG(H+L)



Immunohistochemistry

Image 2. Immunohistochemistry of paraffin-embedded human colon cancer using ABIN7145489 at dilution of 1:100