



[Go to Product page](#)

Datasheet for ABIN7145493
anti-GLB1 antibody (AA 317-455)

4 Images

Overview

Quantity:	100 µg
Target:	GLB1
Binding Specificity:	AA 317-455
Reactivity:	Human
Host:	Rabbit
Clonality:	Polyclonal
Conjugate:	This GLB1 antibody is un-conjugated
Application:	Western Blotting (WB), ELISA, Immunohistochemistry (IHC), Immunofluorescence (IF)

Product Details

Immunogen:	Recombinant Human Beta-galactosidase protein (317-455AA)
Isotype:	IgG
Cross-Reactivity:	Human
Purification:	>95%, Protein G purified

Target Details

Target:	GLB1
Alternative Name:	GLB1 (GLB1 Products)
Background:	Background: Cleaves beta-linked terminal galactosyl residues from gangliosides, glycoproteins, and glycosaminoglycans.

Target Details

Aliases: Acid beta galactosidase antibody, Acid beta-galactosidase antibody, Beta galactosidase 1 antibody, Beta galactosidase antibody, Beta-galactosidase antibody, BGAL_HUMAN antibody, EBP antibody, EBP, included antibody, Elastin receptor 1 (67kD) antibody, Elastin receptor 1 67 kDa antibody, Elastin receptor 1 antibody, Elastin receptor 1, included antibody, Elastin-binding protein, included antibody, ELNR1 antibody, Galactosidase beta 1 antibody, GLB 1 antibody, GLB1 antibody, Lactase antibody, MPS4B antibody, S-GAL, included antibody

UniProt: [P16278](#)

Pathways: [Glycosaminoglycan Metabolic Process](#)

Application Details

Application Notes: Recommended dilution: WB:1:200-1:5000, IHC:1:20-1:200, IF:1:50-1:200,

Restrictions: For Research Use only

Handling

Format: Liquid

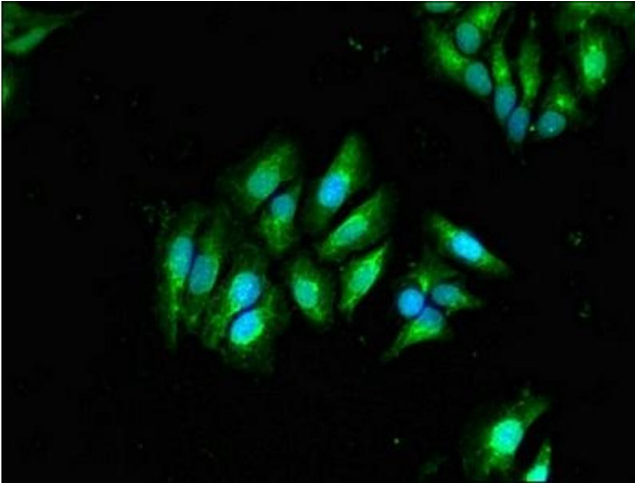
Buffer: Preservative: 0.03 % Proclin 300
Constituents: 50 % Glycerol, 0.01M PBS, pH 7.4

Preservative: ProClin

Precaution of Use: This product contains ProClin: a POISONOUS AND HAZARDOUS SUBSTANCE which should be handled by trained staff only.

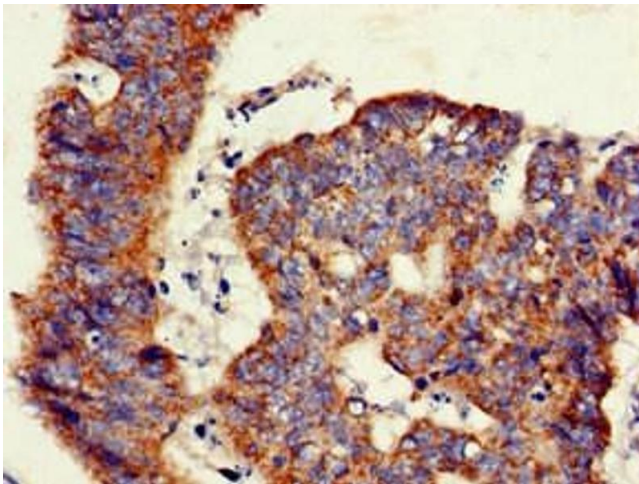
Storage: -20 °C,-80 °C

Storage Comment: Upon receipt, store at -20°C or -80°C. Avoid repeated freeze.



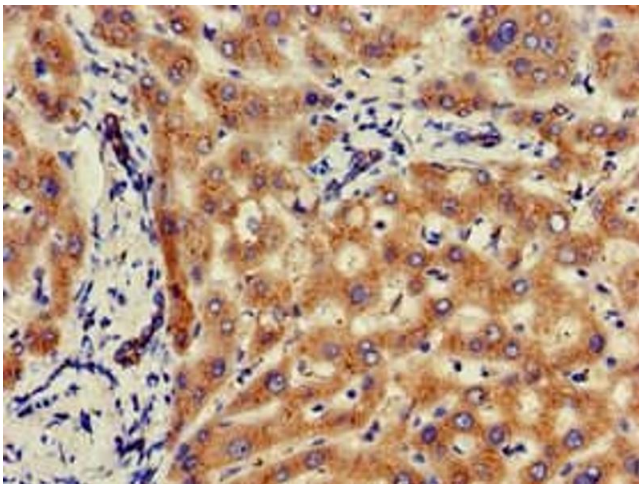
Immunofluorescence

Image 1. Immunofluorescent analysis of HeLa cells using ABIN7145493 at dilution of 1:100 and Alexa Fluor 488-conjugated AffiniPure Goat Anti-Rabbit IgG(H+L)



Immunohistochemistry

Image 2. Immunohistochemistry of paraffin-embedded human colon cancer using ABIN7145493 at dilution of 1:100



Immunohistochemistry

Image 3. Immunohistochemistry of paraffin-embedded human liver tissue using ABIN7145493 at dilution of 1:100

Please check the [product details page](#) for more images. Overall 4 images are available for ABIN7145493.