



[Go to Product page](#)

Datasheet for ABIN7145501
anti-GLB1L3 antibody (AA 1-236)

1 Image

Overview

Quantity:	100 µL
Target:	GLB1L3
Binding Specificity:	AA 1-236
Reactivity:	Human
Host:	Rabbit
Clonality:	Polyclonal
Conjugate:	This GLB1L3 antibody is un-conjugated
Application:	ELISA, Western Blotting (WB)

Product Details

Immunogen:	Recombinant Human Beta-galactosidase-1-like protein 3 protein (1-236AA)
Isotype:	IgG
Cross-Reactivity:	Human
Purification:	Antigen Affinity Purified

Target Details

Target:	GLB1L3
Alternative Name:	GLB1L3 (GLB1L3 Products)
Background:	Background: vacuole, beta-galactosidase activity Aliases: GLB1L3 antibody, Beta-galactosidase-1-like protein 3 antibody, EC 3.2.1.- antibody

Target Details

UniProt: [Q8NCI6](#)

Application Details

Application Notes: Recommended dilution: WB:1:1000-1:5000,

Restrictions: For Research Use only

Handling

Format: Liquid

Buffer: Preservative: 0.03 % Proclin 300
Constituents: 50 % Glycerol, 0.01M PBS, PH 7.4

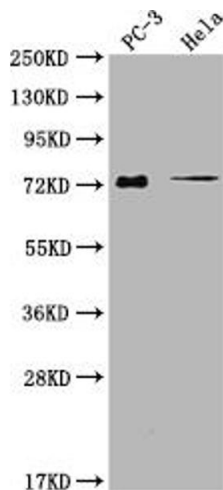
Preservative: ProClin

Precaution of Use: This product contains ProClin: a POISONOUS AND HAZARDOUS SUBSTANCE which should be handled by trained staff only.

Storage: -20 °C,-80 °C

Storage Comment: Upon receipt, store at -20°C or -80°C. Avoid repeated freeze.

Images



Western Blotting

Image 1. Western Blot Positive WB detected in: PC-3 whole cell lysate, HeLa whole cell lysate All lanes: GLB1L3 antibody at 1:2000 Secondary Goat polyclonal to rabbit IgG at 1/50000 dilution Predicted band size: 75, 36 kDa Observed band size: 75 kDa