

Datasheet for ABIN7145515
anti-Klotho beta antibody (AA 1-130)[Go to Product page](#)

3 Images

Overview

Quantity:	100 µg
Target:	Klotho beta (KLB)
Binding Specificity:	AA 1-130
Reactivity:	Human
Host:	Rabbit
Clonality:	Polyclonal
Conjugate:	This Klotho beta antibody is un-conjugated
Application:	Immunohistochemistry (IHC), ELISA, Immunofluorescence (IF)

Product Details

Immunogen:	Recombinant Human Beta-klotho protein (1-130AA)
Isotype:	IgG
Cross-Reactivity:	Human
Purification:	>95%, Protein G purified

Target Details

Target:	Klotho beta (KLB)
Alternative Name:	KLB (KLB Products)
Background:	Background: Contributes to the transcriptional repression of cholesterol 7-alpha-hydroxylase (CYP7A1), the rate-limiting enzyme in bile acid synthesis. Probably inactive as a glycosidase.

Target Details

Increases the ability of FGFR1 and FGFR4 to bind FGF21 (By similarity).

Aliases: Beta-klotho antibody, BetaKlotho antibody, BKL antibody, KLB antibody, KLOTB_HUMAN antibody, Klotho beta like protein antibody, Klotho beta-like protein antibody

UniProt: [Q86Z14](#)

Pathways: [Fc-epsilon Receptor Signaling Pathway](#), [EGFR Signaling Pathway](#), [Neurotrophin Signaling Pathway](#), [Growth Factor Binding](#)

Application Details

Application Notes: Recommended dilution: IHC:1:200-1:500, IF:1:50-1:200,

Restrictions: For Research Use only

Handling

Format: Liquid

Buffer: Preservative: 0.03 % Proclin 300
Constituents: 50 % Glycerol, 0.01M PBS, pH 7.4

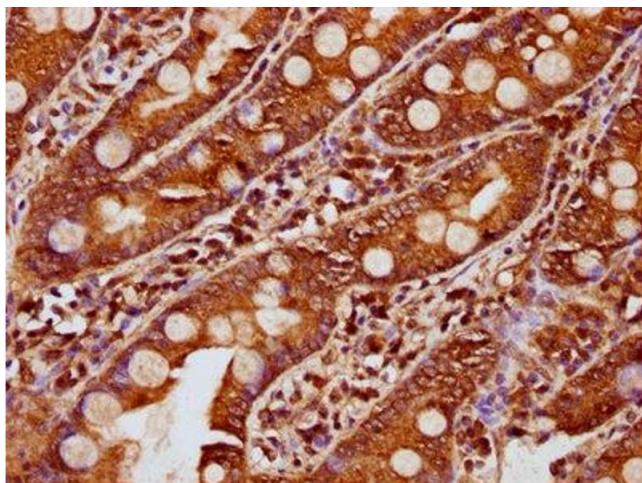
Preservative: ProClin

Precaution of Use: This product contains ProClin: a POISONOUS AND HAZARDOUS SUBSTANCE which should be handled by trained staff only.

Storage: -20 °C,-80 °C

Storage Comment: Upon receipt, store at -20°C or -80°C. Avoid repeated freeze.

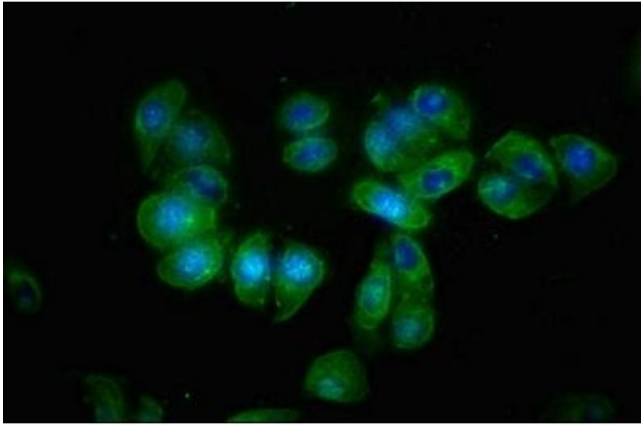
Images



Immunohistochemistry

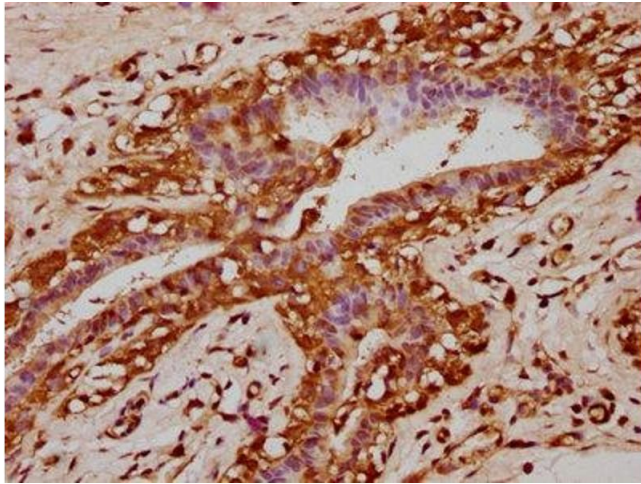
Image 1. IHC image of ABIN7145515 diluted at 1:200 and staining in paraffin-embedded human small intestine tissue performed on a Leica Bond™ system. After dewaxing and hydration, antigen retrieval was mediated by high pressure in a citrate buffer (pH 6.0). Section was blocked with 10% normal goat serum 30min at RT. Then primary antibody (1% BSA) was incubated at 4°C overnight. The primary is detected by a biotinylated secondary antibody and

visualized using an HRP conjugated SP system.



Immunofluorescence

Image 2. Immunofluorescence staining of HepG2 cells with ABIN7145515 at 1:66, counter-stained with DAPI. The cells were fixed in 4% formaldehyde, permeabilized using 0.2% Triton X-100 and blocked in 10% normal Goat Serum. The cells were then incubated with the antibody overnight at 4°C. The secondary antibody was Alexa Fluor 488-conjugated AffiniPure Goat Anti-Rabbit IgG(H+L).



Immunohistochemistry

Image 3. IHC image of ABIN7145515 diluted at 1:200 and staining in paraffin-embedded human breast cancer performed on a Leica Bond™ system. After dewaxing and hydration, antigen retrieval was mediated by high pressure in a citrate buffer (pH 6.0). Section was blocked with 10% normal goat serum 30min at RT. Then primary antibody (1% BSA) was incubated at 4°C overnight. The primary is detected by a biotinylated secondary antibody and visualized using an HRP conjugated SP system.