

Datasheet for ABIN7145531  
**anti-BACE1 antibody (AA 46-155)**[Go to Product page](#)

## 3 Images

## Overview

Quantity:	100 µg
Target:	BACE1
Binding Specificity:	AA 46-155
Reactivity:	Human
Host:	Rabbit
Clonality:	Polyclonal
Conjugate:	This BACE1 antibody is un-conjugated
Application:	ELISA, Immunohistochemistry (IHC), Immunofluorescence (IF)

## Product Details

Immunogen:	Recombinant Human Beta-secretase 1 protein (46-155AA)
Isotype:	IgG
Cross-Reactivity:	Human
Purification:	>95%, Protein G purified

## Target Details

Target:	BACE1
Alternative Name:	BACE1 ( <a href="#">BACE1 Products</a> )
Background:	Background: Responsible for the proteolytic processing of the amyloid precursor protein (APP). Cleaves at the N-terminus of the A-beta peptide sequence, between residues 671 and 672 of

## Target Details

APP, leads to the generation and extracellular release of beta-cleaved soluble APP, and a corresponding cell-associated C-terminal fragment which is later released by gamma-secretase.

Aliases: APP beta secretase antibody, Asp 2 antibody, ASP2 antibody, Aspartyl protease 2 antibody, BACE 1 antibody, BACE antibody, BACE1 antibody, BACE1\_HUMAN antibody, Beta secretase 1 antibody, Beta secretase antibody, Beta site amyloid beta A4 precursor protein cleaving enzyme antibody, Beta site amyloid precursor protein cleaving enzyme 1 antibody, Beta site amyloid precursor protein cleaving enzyme antibody, Beta site APP cleaving enzyme 1 antibody, Beta site APP cleaving enzyme antibody, Beta-secretase 1 antibody, Beta-site amyloid precursor protein cleaving enzyme 1 antibody, Beta-site APP cleaving enzyme 1 antibody, FLJ90568 antibody, HSPC104 antibody, Memapsin 2 antibody, Memapsin-2 antibody, Memapsin2 antibody, Membrane associated aspartic protease 2 antibody, Membrane-associated aspartic protease 2 antibody, Transmembrane aspartic proteinase Asp2 antibody

UniProt: [P56817](#)

## Application Details

Application Notes: Recommended dilution: IHC:1:20-1:200, IF:1:50-1:200,

Restrictions: For Research Use only

## Handling

Format: Liquid

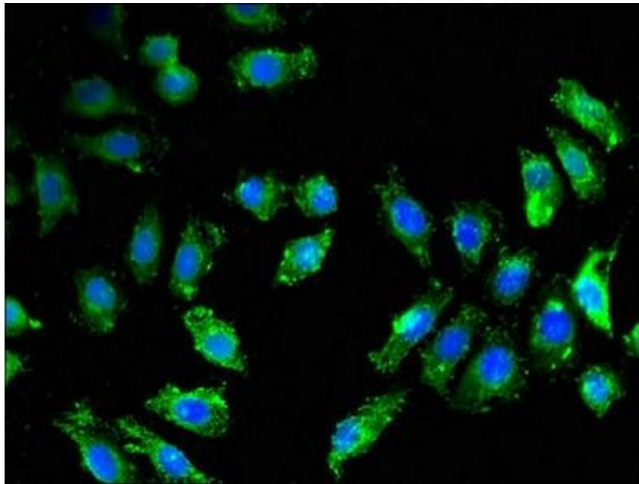
Buffer: Preservative: 0.03 % Proclin 300  
Constituents: 50 % Glycerol, 0.01M PBS, pH 7.4

Preservative: ProClin

Precaution of Use: This product contains ProClin: a POISONOUS AND HAZARDOUS SUBSTANCE which should be handled by trained staff only.

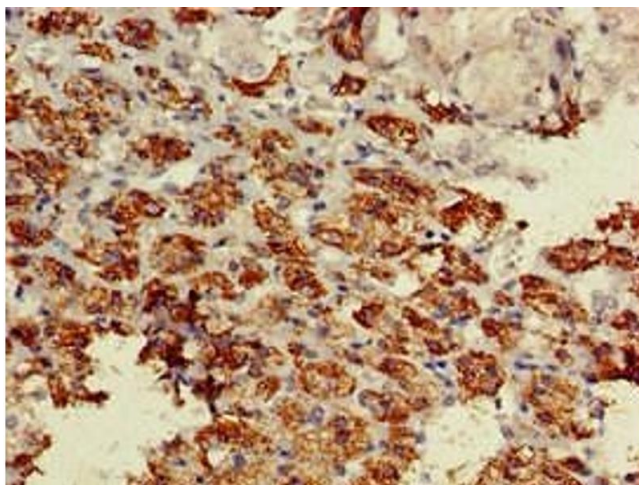
Storage: -20 °C,-80 °C

Storage Comment: Upon receipt, store at -20°C or -80°C. Avoid repeated freeze.



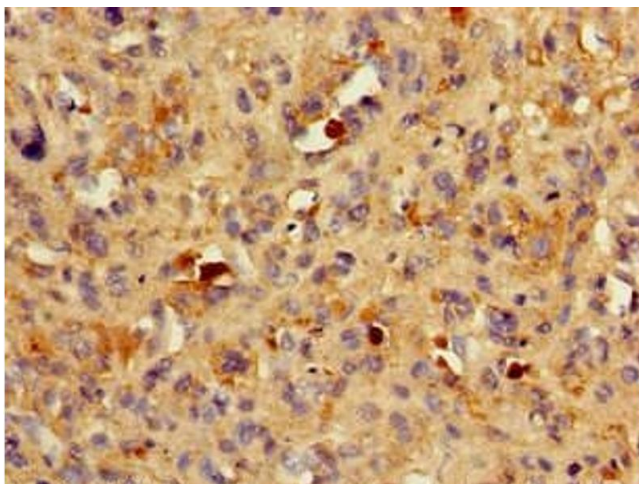
#### Immunofluorescence

**Image 1.** Immunofluorescent analysis of A549 cells using ABIN7145531 at dilution of 1:100 and Alexa Fluor 488-conjugated AffiniPure Goat Anti-Rabbit IgG(H+L)



#### Immunohistochemistry

**Image 2.** Immunohistochemistry of paraffin-embedded human adrenal gland tissue using ABIN7145531 at dilution of 1:100



#### Immunohistochemistry

**Image 3.** Immunohistochemistry of paraffin-embedded human melanoma using ABIN7145531 at dilution of 1:100