



[Go to Product page](#)

Datasheet for ABIN7145580

anti-Biglycan antibody (AA 38-300)

3 Images

Overview

Quantity:	100 µg
Target:	Biglycan (BGN)
Binding Specificity:	AA 38-300
Reactivity:	Human
Host:	Rabbit
Clonality:	Polyclonal
Conjugate:	This Biglycan antibody is un-conjugated
Application:	Immunohistochemistry (IHC), ELISA, Immunofluorescence (IF)

Product Details

Immunogen:	Recombinant Human Biglycan protein (38-300AA)
Isotype:	IgG
Cross-Reactivity:	Human
Purification:	>95%, Protein G purified

Target Details

Target:	Biglycan (BGN)
Alternative Name:	BGN (BGN Products)
Background:	Background: May be involved in collagen fiber assembly. Aliases: BGN antibody, Biglycan antibody, Biglycan proteoglycan antibody, Bone/cartilage

Target Details

proteoglycan I antibody, Dermatan sulphate proteoglycan I antibody, DSPG1 antibody, PG S1 antibody, PG-S1 antibody, PGI antibody, PGS1_HUMAN antibody, SEMDX antibody, SLRR1A antibody, Small leucine rich protein 1A antibody

UniProt: [P21810](#)

Pathways: [Glycosaminoglycan Metabolic Process](#)

Application Details

Application Notes: Recommended dilution: IHC:1:20-1:200, IF:1:50-1:200,

Restrictions: For Research Use only

Handling

Format: Liquid

Buffer: Preservative: 0.03 % Proclin 300
Constituents: 50 % Glycerol, 0.01M PBS, PH 7.4

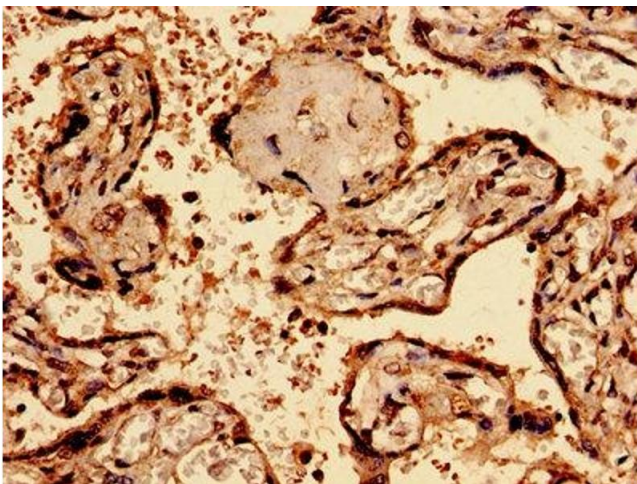
Preservative: ProClin

Precaution of Use: This product contains ProClin: a POISONOUS AND HAZARDOUS SUBSTANCE which should be handled by trained staff only.

Storage: -20 °C,-80 °C

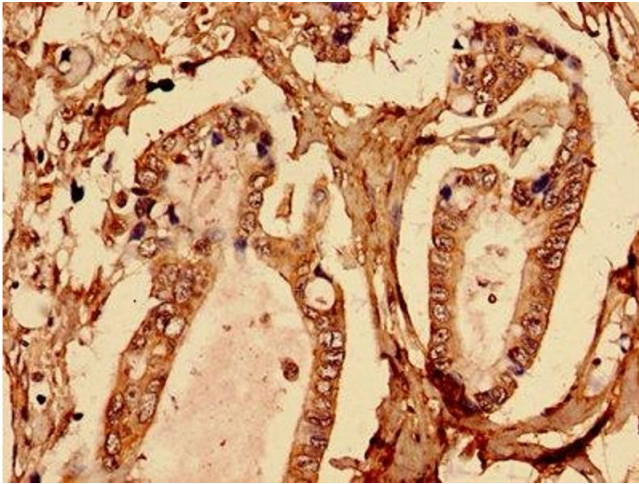
Storage Comment: Upon receipt, store at -20°C or -80°C. Avoid repeated freeze.

Images



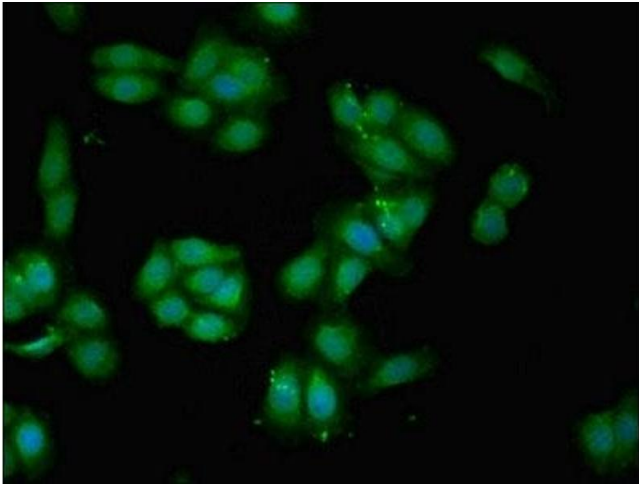
Immunohistochemistry

Image 1. Immunohistochemistry analysis of human placenta tissue using ABIN7145580 at dilution of 1:100



Immunohistochemistry

Image 2. Immunohistochemistry analysis of human pancreatic cancer using ABIN7145580 at dilution of 1:100



Immunofluorescence

Image 3. Immunofluorescent analysis of HepG2 cells using ABIN7145580 at dilution of 1:100 and Alexa Fluor 488-conjugated AffiniPure Goat Anti-Rabbit IgG(H+L)