

Datasheet for ABIN7145595

anti-Cholesterol Esterase antibody (AA 661-753)[Go to Product page](#)**2** Images

Overview

Quantity:	100 µg
Target:	Cholesterol Esterase (CEL)
Binding Specificity:	AA 661-753
Reactivity:	Human
Host:	Rabbit
Clonality:	Polyclonal
Conjugate:	This Cholesterol Esterase antibody is un-conjugated
Application:	ELISA, Immunohistochemistry (IHC)

Product Details

Immunogen:	Recombinant Human Bile salt-activated lipase protein (661-753AA)
Isotype:	IgG
Cross-Reactivity:	Human
Purification:	>95%, Protein G purified

Target Details

Target:	Cholesterol Esterase (CEL)
Alternative Name:	CEL (CEL Products)
Background:	Background: Catalyzes fat and vitamin absorption. Acts in concert with pancreatic lipase and colipase for the complete digestion of dietary triglycerides.

Target Details

Aliases: CEL antibody, BALBile salt-activated lipase antibody, BAL antibody, EC 3.1.1.13 antibody, EC 3.1.1.3 antibody, EC 3.1.1.6 antibody, Bile salt-stimulated lipase antibody, BSSL antibody, Bucelipase antibody, Carboxyl ester lipase antibody, Cholesterol esterase antibody, Pancreatic lysophospholipase antibody, Sterol esterase antibody

UniProt: [P19835](#)

Pathways: [Lipid Metabolism](#)

Application Details

Application Notes: Recommended dilution: IHC:1:500-1:1000,

Restrictions: For Research Use only

Handling

Format: Liquid

Buffer: Preservative: 0.03 % Proclin 300
Constituents: 50 % Glycerol, 0.01M PBS, pH 7.4

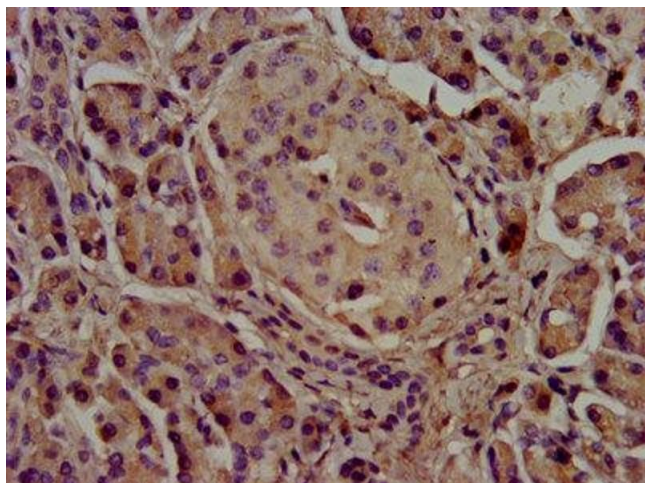
Preservative: ProClin

Precaution of Use: This product contains ProClin: a POISONOUS AND HAZARDOUS SUBSTANCE which should be handled by trained staff only.

Storage: -20 °C,-80 °C

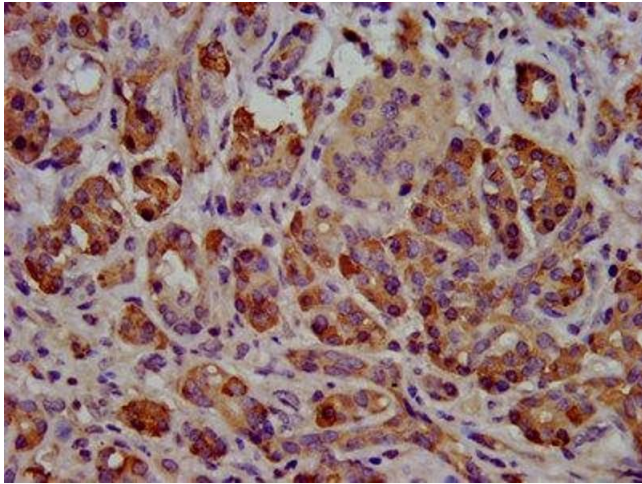
Storage Comment: Upon receipt, store at -20°C or -80°C. Avoid repeated freeze.

Images



Immunohistochemistry

Image 1. IHC image of ABIN7145595 diluted at 1:500 and staining in paraffin-embedded human pancreatic tissue performed on a Leica Bond™ system. After dewaxing and hydration, antigen retrieval was mediated by high pressure in a citrate buffer (pH 6.0). Section was blocked with 10% normal goat serum 30min at RT. Then primary antibody (1% BSA) was incubated at 4°C overnight. The primary is detected by a biotinylated secondary antibody and



visualized using an HRP conjugated SP system.

Immunohistochemistry

Image 2. IHC image of ABIN7145595 diluted at 1:500 and staining in paraffin-embedded human pancreatic cancer performed on a Leica Bond™ system. After dewaxing and hydration, antigen retrieval was mediated by high pressure in a citrate buffer (pH 6.0). Section was blocked with 10% normal goat serum 30min at RT. Then primary antibody (1% BSA) was incubated at 4°C overnight. The primary is detected by a biotinylated secondary antibody and visualized using an HRP conjugated SP system.