

Datasheet for ABIN7145604
anti-BLOC1S2 antibody (AA 44-142)[Go to Product page](#)

2 Images

Overview

Quantity:	100 µL
Target:	BLOC1S2
Binding Specificity:	AA 44-142
Reactivity:	Human
Host:	Rabbit
Clonality:	Polyclonal
Conjugate:	This BLOC1S2 antibody is un-conjugated
Application:	Immunohistochemistry (IHC), ELISA

Product Details

Immunogen:	Recombinant Human Biogenesis of lysosome-related organelles complex 1 subunit 2 protein (44-142AA)
Isotype:	IgG
Cross-Reactivity:	Human
Purification:	Antigen Affinity Purified

Target Details

Target:	BLOC1S2
Alternative Name:	BLOC1S2 (BLOC1S2 Products)
Background:	Background: Component of the BLOC-1 complex, a complex that is required for normal

Target Details

biogenesis of lysosome-related organelles (LRO), such as platelet dense granules and melanosomes. In concert with the AP-3 complex, the BLOC-1 complex is required to target membrane protein cargos into vesicles assembled at cell bodies for delivery into neurites and nerve terminals. The BLOC-1 complex, in association with SNARE proteins, is also proposed to be involved in neurite extension. Plays a role in intracellular vesicle trafficking. May play a role in cell proliferation.

Aliases: Biogenesis of lysosome-related organelles complex 1 subunit 2 antibody, BL1S2_HUMAN antibody, BLOC-1 subunit 2 antibody, Bloc1s2 antibody, BLOS2 antibody, Centrosome-associated protein antibody, RP11 316M21.4 antibody

UniProt: [Q6QNY1](#)

Application Details

Application Notes: Recommended dilution: IHC:1:20-1:200,

Restrictions: For Research Use only

Handling

Format: Liquid

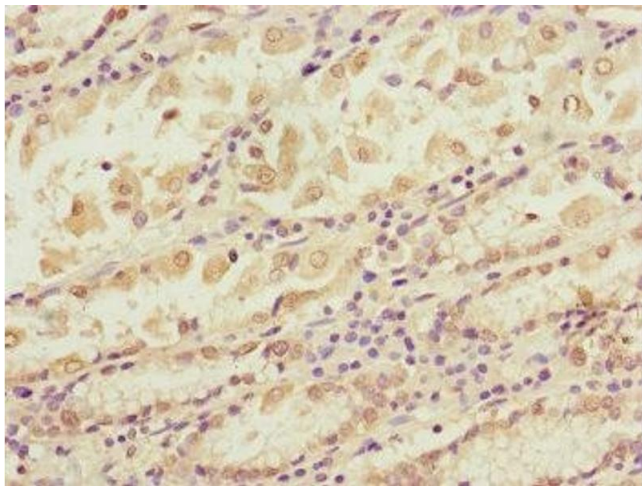
Buffer: PBS with 0.02 % sodium azide, 50 % glycerol, pH 7.3.

Preservative: Sodium azide

Precaution of Use: This product contains Sodium azide: a POISONOUS AND HAZARDOUS SUBSTANCE which should be handled by trained staff only.

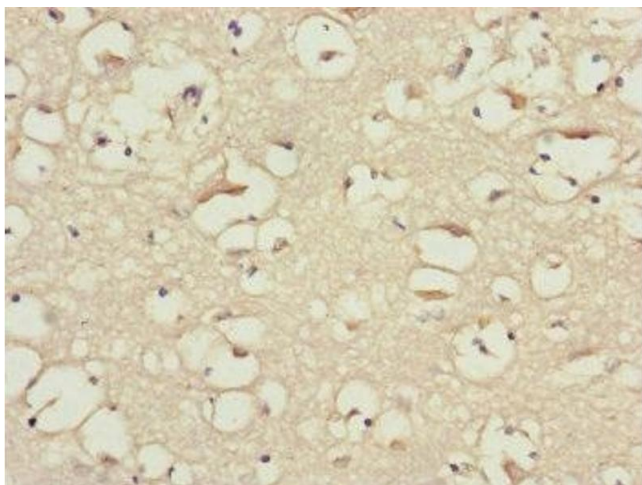
Storage: -20 °C,-80 °C

Storage Comment: Upon receipt, store at -20°C or -80°C. Avoid repeated freeze.



Immunohistochemistry

Image 1. Immunohistochemistry of paraffin-embedded human gastric cancer using ABIN7145604 at dilution of 1:100



Immunohistochemistry

Image 2. Immunohistochemistry of paraffin-embedded human brain tissue using ABIN7145604 at dilution of 1:100