



[Go to Product page](#)

Datasheet for ABIN7145609
anti-Pallidin antibody (AA 1-170)

3 Images

Overview

Quantity:	100 µL
Target:	Pallidin (PLDN)
Binding Specificity:	AA 1-170
Reactivity:	Human
Host:	Rabbit
Clonality:	Polyclonal
Conjugate:	This Pallidin antibody is un-conjugated
Application:	Western Blotting (WB), ELISA, Immunohistochemistry (IHC)

Product Details

Immunogen:	Recombinant Human Biogenesis of lysosome-related organelles complex 1 subunit 6 protein (1-170AA)
Isotype:	IgG
Cross-Reactivity:	Human
Purification:	Antigen Affinity Purified

Target Details

Target:	Pallidin (PLDN)
Alternative Name:	BLOC1S6 (PLDN Products)
Background:	Background: Component of the BLOC-1 complex, a complex that is required for normal

Target Details

biogenesis of lysosome-related organelles (LRO), such as platelet dense granules and melanosomes. In concert with the AP-3 complex, the BLOC-1 complex is required to target membrane protein cargos into vesicles assembled at cell bodies for delivery into neurites and nerve terminals. The BLOC-1 complex, in association with SNARE proteins, is also proposed to be involved in neurite extension. May play a role in intracellular vesicle trafficking, particularly in the vesicle-docking and fusion process.

Aliases: Bloc1s6 antibody, biogenesis of lysosome-related organelles complex 1 subunit 6 antibody, PA antibody, Pallid (mouse) homolog antibody, PALLID antibody, Pallid protein antibody, Pallid protein homolog antibody, Pallidin antibody, Pallidin homolog (mouse) antibody, PLDN antibody, PLDN_HUMAN antibody, Syntaxin 13 binding protein antibody, Syntaxin 13-interacting protein antibody

UniProt: [Q9UL45](#)

Pathways: [Synaptic Vesicle Exocytosis](#)

Application Details

Application Notes: Recommended dilution: WB:1:1000-1:5000, IHC:1:20-1:200,

Restrictions: For Research Use only

Handling

Format: Liquid

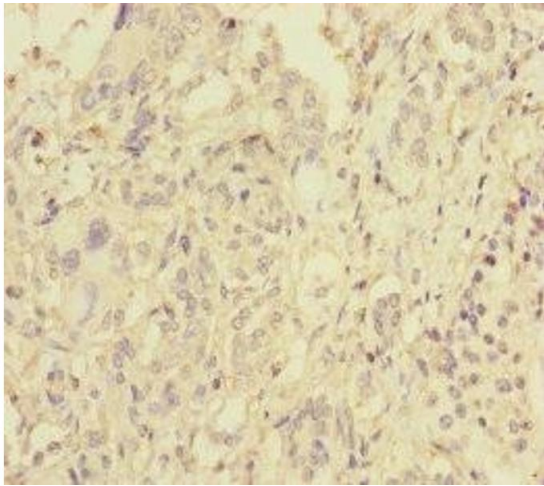
Buffer: PBS with 0.02 % sodium azide, 50 % glycerol, pH 7.3.

Preservative: Sodium azide

Precaution of Use: This product contains Sodium azide: a POISONOUS AND HAZARDOUS SUBSTANCE which should be handled by trained staff only.

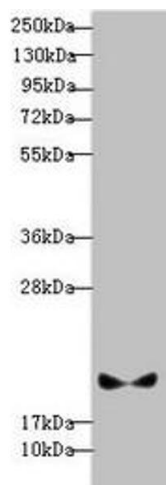
Storage: -20 °C,-80 °C

Storage Comment: Upon receipt, store at -20°C or -80°C. Avoid repeated freeze.



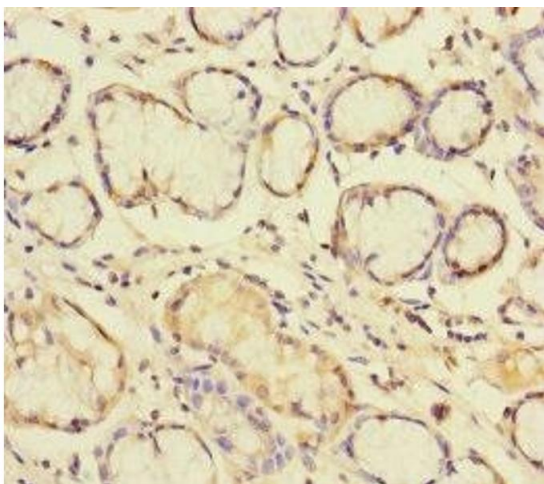
Immunohistochemistry

Image 1. Immunohistochemistry of paraffin-embedded human pancreatic cancer using ABIN7145609 at dilution of 1:100



Western Blotting

Image 2. Western blot All lanes: BLOC1S6 antibody at 3.13 µg/mL + A431 whole cell lysate Secondary Goat polyclonal to rabbit IgG at 1/10000 dilution Predicted band size: 20, 9 kDa Observed band size: 20 kDa



Immunohistochemistry

Image 3. Immunohistochemistry of paraffin-embedded human gastric cancer using ABIN7145609 at dilution of 1:100