



[Go to Product page](#)

Datasheet for ABIN7145640
anti-BVES antibody (AA 241-360)

1 Image

Overview

Quantity:	100 µL
Target:	BVES
Binding Specificity:	AA 241-360
Reactivity:	Human
Host:	Rabbit
Clonality:	Polyclonal
Conjugate:	This BVES antibody is un-conjugated
Application:	ELISA, Immunofluorescence (IF)

Product Details

Immunogen:	Recombinant Human Blood vessel epicardial substance protein (241-360AA)
Isotype:	IgG
Cross-Reactivity:	Human
Purification:	Antigen Affinity Purified

Target Details

Target:	BVES
Alternative Name:	BVES (BVES Products)
Background:	Background: Cell adhesion molecule involved in the establishment and/or maintenance of cell integrity. Involved in the formation and regulation of the tight junction (TJ) paracellular

Target Details

permeability barrier in epithelial cells (PubMed:16188940). Plays a role in VAMP3-mediated vesicular transport and recycling of different receptor molecules through its interaction with VAMP3. Plays a role in the regulation of cell shape and movement by modulating the Rho-family GTPase activity through its interaction with ARHGEF25/GEFT. Induces primordial adhesive contact and aggregation of epithelial cells in a Ca(2+)-independent manner. Also involved in striated muscle regeneration and repair and in the regulation of cell spreading (By similarity). Important for the maintenance of cardiac function. Plays a regulatory function in heart rate dynamics mediated, at least in part, through cAMP-binding and, probably, by increasing cell surface expression of the potassium channel KCNK2 and enhancing current density (PubMed:26642364). Is also a caveolae-associated protein important for the preservation of caveolae structural and functional integrity as well as for heart protection against ischemia injury.

Aliases: Blood vessel epicardial substance antibody, Bves antibody, hBVES antibody, MGC42413 antibody, POP 1 antibody, POP1 antibody, POPD1_HUMAN antibody, POPDC 1 antibody, POPDC1 antibody, Popeye domain containing 1 antibody, Popeye domain containing protein 1 antibody, Popeye domain-containing protein 1 antibody, Popeye protein 1 antibody

UniProt: [Q8NE79](#)

Application Details

Application Notes: Recommended dilution: IF:1:50-1:200,

Restrictions: For Research Use only

Handling

Format: Liquid

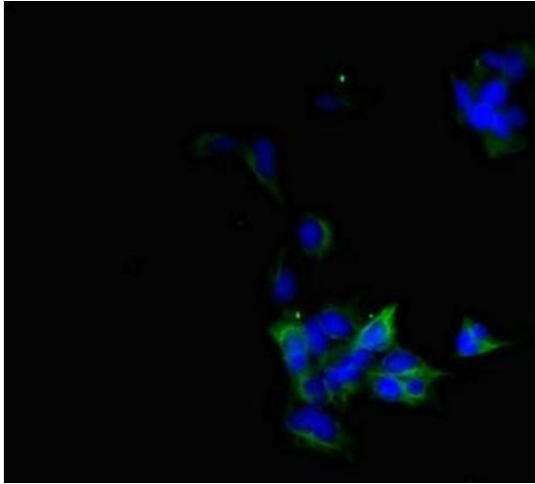
Buffer: PBS with 0.02 % sodium azide, 50 % glycerol, pH 7.3.

Preservative: Sodium azide

Precaution of Use: This product contains Sodium azide: a POISONOUS AND HAZARDOUS SUBSTANCE which should be handled by trained staff only.

Storage: -20 °C,-80 °C

Storage Comment: Upon receipt, store at -20°C or -80°C. Avoid repeated freeze.



Immunofluorescence

Image 1. Immunofluorescent analysis of 293 cells using ABIN7145640 at dilution of 1:100 and Alexa Fluor 488-conjugated AffiniPure Goat Anti-Rabbit IgG(H+L)