



Datasheet for ABIN7145646
anti-DBC1 antibody (AA 20-320)



[Go to Product page](#)

2 Images

Overview

Quantity:	100 µg
Target:	DBC1 (BRINP1)
Binding Specificity:	AA 20-320
Reactivity:	Human
Host:	Rabbit
Clonality:	Polyclonal
Conjugate:	This DBC1 antibody is un-conjugated
Application:	ELISA, Immunohistochemistry (IHC), Immunofluorescence (IF)

Product Details

Immunogen:	Recombinant Human BMP/retinoic acid-inducible neural-specific protein 1 protein (20-320AA)
Isotype:	IgG
Cross-Reactivity:	Human
Purification:	>95%, Protein G purified

Target Details

Target:	DBC1 (BRINP1)
Alternative Name:	BRINP1 (BRINP1 Products)
Background:	Background: Inhibits cell proliferation by negative regulation of the G1/S transition. Mediates cell death which is not of the classical apoptotic type and regulates expression of components

Target Details

of the plasminogen pathway.

Aliases: BMP/retinoic acid-inducible neural-specific protein 1 antibody, BRINP1 antibody, DBC1 antibody, DBC1_HUMAN antibody, DBCCR1 antibody, Deleted in bladder cancer protein 1 antibody, Deleted in bladder cancer protein 1 precursor antibody, FAM5A antibody, IB3089A antibody, Protein FAM5A antibody

UniProt: [O60477](#)

Application Details

Application Notes: Recommended dilution: IHC:1:20-1:200, IF:1:50-1:200,

Restrictions: For Research Use only

Handling

Format: Liquid

Buffer: Preservative: 0.03 % Proclin 300
Constituents: 50 % Glycerol, 0.01M PBS, PH 7.4

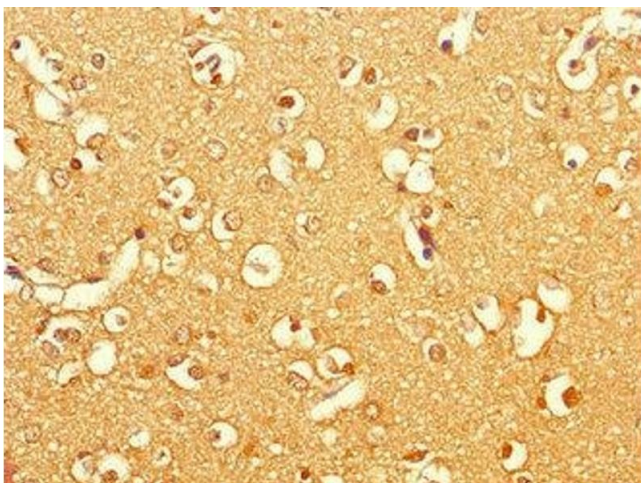
Preservative: ProClin

Precaution of Use: This product contains ProClin: a POISONOUS AND HAZARDOUS SUBSTANCE which should be handled by trained staff only.

Storage: -20 °C,-80 °C

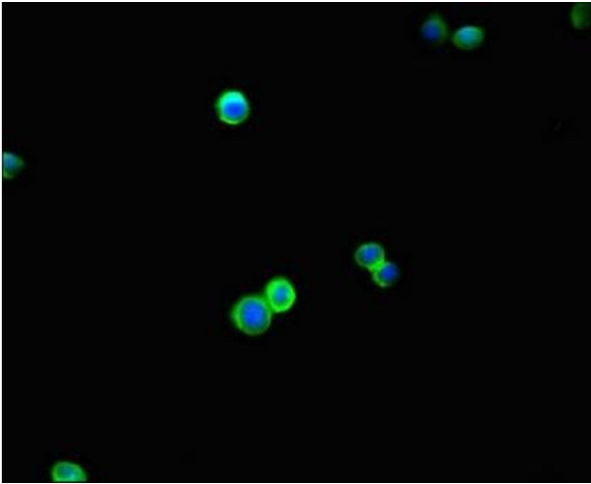
Storage Comment: Upon receipt, store at -20°C or -80°C. Avoid repeated freeze.

Images



Immunohistochemistry

Image 1. Immunohistochemistry of paraffin-embedded human brain tissue using ABIN7145646 at dilution of 1:100



Immunofluorescence

Image 2. Immunofluorescent analysis of HepG2 cells using ABIN7145646 at dilution of 1:100 and Alexa Fluor 488-conjugated AffiniPure Goat Anti-Rabbit IgG(H+L)