

Datasheet for ABIN7145712
anti-CDCA8 antibody (AA 1-280)[Go to Product page](#)

1 Image

Overview

Quantity:	100 µL
Target:	CDCA8
Binding Specificity:	AA 1-280
Reactivity:	Human
Host:	Rabbit
Clonality:	Polyclonal
Conjugate:	This CDCA8 antibody is un-conjugated
Application:	Immunohistochemistry (IHC), ELISA

Product Details

Immunogen:	Recombinant Human Borealin protein (1-280AA)
Isotype:	IgG
Cross-Reactivity:	Human
Purification:	Antigen Affinity Purified

Target Details

Target:	CDCA8
Alternative Name:	CDCA8 (CDCA8 Products)
Background:	Background: Component of the chromosomal passenger complex (CPC), a complex that acts as a key regulator of mitosis. The CPC complex has essential functions at the centromere in

Target Details

ensuring correct chromosome alignment and segregation and is required for chromatin-induced microtubule stabilization and spindle assembly. In the complex, it may be required to direct the CPC to centromeric DNA. Major effector of the TTK kinase in the control of attachment-error-correction and chromosome alignment.

Aliases: BOR antibody, BOREA_HUMAN antibody, Borealin antibody, CDCA8 antibody, Cell division cycle associated 8 antibody, cell division cycle associated protein 8 antibody, Cell division cycle-associated protein 8 antibody, Dasra B antibody, Dasra-B antibody, DasraB antibody, FLJ10468 antibody, FLJ12042 antibody, hDasra B antibody, hDasra-B antibody, MESRGP antibody, OTTHUMP00000004514 antibody, pluripotent embryonic stem cell related gene 3 protein antibody, Pluripotent embryonic stem cell-related gene 3 protein antibody

UniProt: [Q53HL2](#)

Pathways: [Cell Division Cycle, M Phase](#)

Application Details

Application Notes: Recommended dilution: IHC:1:20-1:200,

Restrictions: For Research Use only

Handling

Format: Liquid

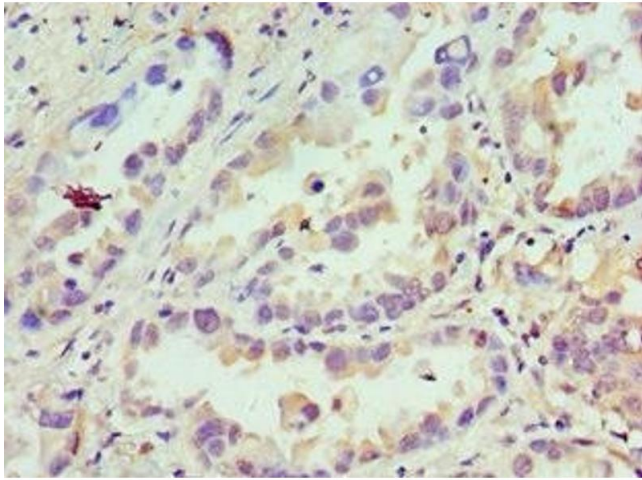
Buffer: PBS with 0.02 % sodium azide, 50 % glycerol, pH 7.3.

Preservative: Sodium azide

Precaution of Use: This product contains Sodium azide: a POISONOUS AND HAZARDOUS SUBSTANCE which should be handled by trained staff only.

Storage: -20 °C,-80 °C

Storage Comment: Upon receipt, store at -20°C or -80°C. Avoid repeated freeze.



Immunohistochemistry

Image 1. Immunohistochemistry of paraffin-embedded human lung cancer using ABIN7145712 at dilution of 1:100