



[Go to Product page](#)

Datasheet for ABIN7145741

anti-BCAT1 antibody (AA 4-276)

3 Images

Overview

Quantity:	100 µg
Target:	BCAT1
Binding Specificity:	AA 4-276
Reactivity:	Human
Host:	Rabbit
Clonality:	Polyclonal
Conjugate:	This BCAT1 antibody is un-conjugated
Application:	Immunohistochemistry (IHC), ELISA, Immunofluorescence (IF)

Product Details

Immunogen:	Recombinant Human Branched-chain-amino-acid aminotransferase, cytosolic protein (4-276AA)
Isotype:	IgG
Cross-Reactivity:	Human
Purification:	>95%, Protein G purified

Target Details

Target:	BCAT1
Alternative Name:	BCAT1 (BCAT1 Products)
Background:	Background: Catalyzes the first reaction in the catabolism of the essential branched chain

Target Details

amino acids leucine, isoleucine, and valine.

Aliases: BCAT antibody, BCAT(c) antibody, Bcat1 antibody, BCAT1_HUMAN antibody, BCT1 antibody, Branched chain amino acid aminotransferase, cytosolic antibody, branched chain amino-acid transaminase 1, cytosolic antibody, branched chain aminotransferase 1 antibody, branched chain aminotransferase 1, cytosolic antibody, Branched-chain-amino-acid aminotransferase antibody, cytosolic antibody, DKFZp686E12175 antibody, EC 2.6.1.42 antibody, ECA39 antibody, MECA39 antibody, placental protein 18 antibody, PNAS 121 antibody, PP18 antibody, Protein ECA39 antibody

UniProt: [P54687](#)

Application Details

Application Notes: Recommended dilution: IHC:1:20-1:200, IF:1:50-1:200,

Restrictions: For Research Use only

Handling

Format: Liquid

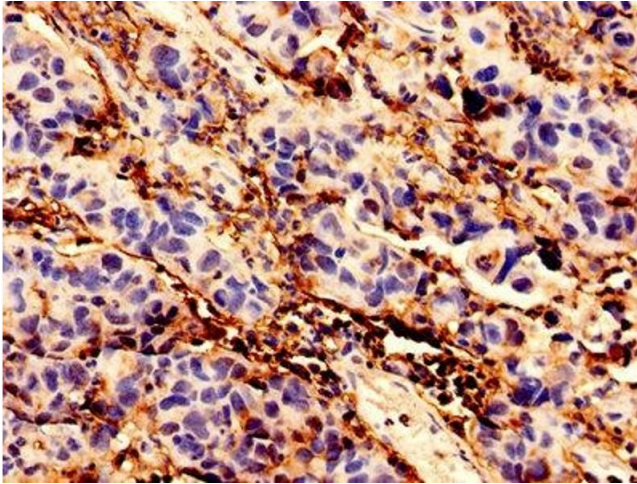
Buffer: Preservative: 0.03 % Proclin 300
Constituents: 50 % Glycerol, 0.01M PBS, PH 7.4

Preservative: ProClin

Precaution of Use: This product contains ProClin: a POISONOUS AND HAZARDOUS SUBSTANCE which should be handled by trained staff only.

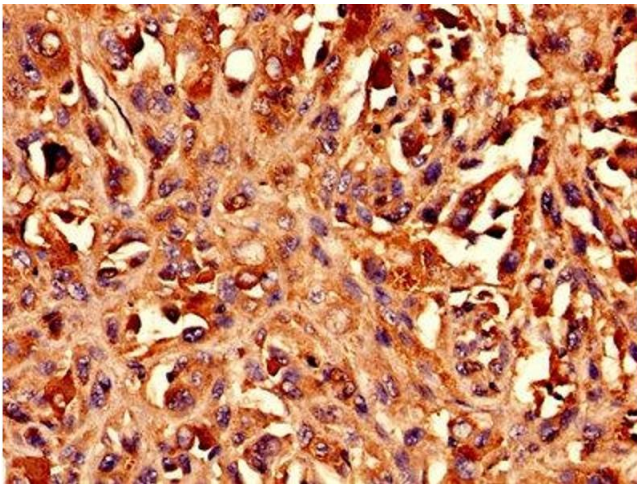
Storage: -20 °C,-80 °C

Storage Comment: Upon receipt, store at -20°C or -80°C. Avoid repeated freeze.



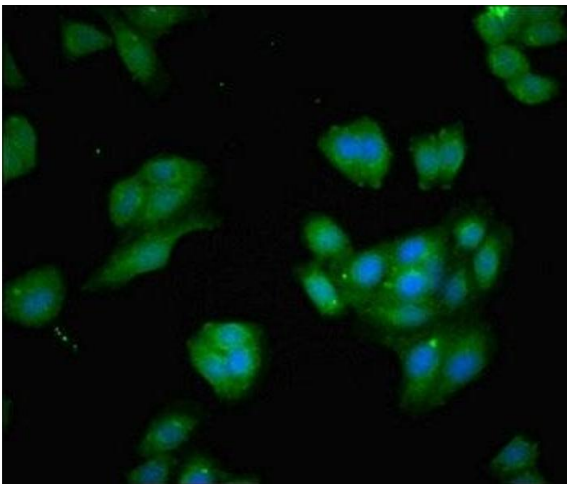
Immunohistochemistry

Image 1. Immunohistochemistry analysis of human bladder cancer using ABIN7145741 at dilution of 1:100



Immunohistochemistry

Image 2. Immunohistochemistry analysis of human melanoma using ABIN7145741 at dilution of 1:100



Immunofluorescence

Image 3. Immunofluorescent analysis of HepG2 cells using ABIN7145741 at dilution of 1:100 and Alexa Fluor 488-conjugated AffiniPure Goat Anti-Rabbit IgG(H+L)