

Datasheet for ABIN7145762
anti-BARD1 antibody (AA 428-777)[Go to Product page](#)

1 Image

Overview

Quantity:	100 µg
Target:	BARD1
Binding Specificity:	AA 428-777
Reactivity:	Human
Host:	Rabbit
Clonality:	Polyclonal
Conjugate:	This BARD1 antibody is un-conjugated
Application:	Western Blotting (WB), ELISA

Product Details

Immunogen:	Recombinant Human BRCA1-associated RING domain protein 1 protein (428-777AA)
Isotype:	IgG
Cross-Reactivity:	Human
Purification:	>95%, Protein G purified

Target Details

Target:	BARD1
Alternative Name:	BARD1 (BARD1 Products)
Background:	Background: E3 ubiquitin-protein ligase. The BRCA1-BARD1 heterodimer specifically mediates the formation of 'Lys-6'-linked polyubiquitin chains and coordinates a diverse range of cellular

Target Details

pathways such as DNA damage repair, ubiquitination and transcriptional regulation to maintain genomic stability. Plays a central role in the control of the cell cycle in response to DNA damage. Acts by mediating ubiquitin E3 ligase activity that is required for its tumor suppressor function. Also forms a heterodimer with CSTF1/CSTF-50 to modulate mRNA processing and RNAP II stability by inhibiting pre-mRNA 3' cleavage.

Aliases: BARD-1 antibody, Bard1 antibody, BARD1_HUMAN antibody, BRCA1 associated RING domain 1 antibody, BRCA1 associated RING domain gene 1 antibody, BRCA1 associated RING domain protein 1 antibody, BRCA1-associated RING domain protein 1 antibody

UniProt: [Q99728](#)

Pathways: [DNA Damage Repair](#)

Application Details

Application Notes: Recommended dilution: WB:1:500-1:5000,

Restrictions: For Research Use only

Handling

Format: Liquid

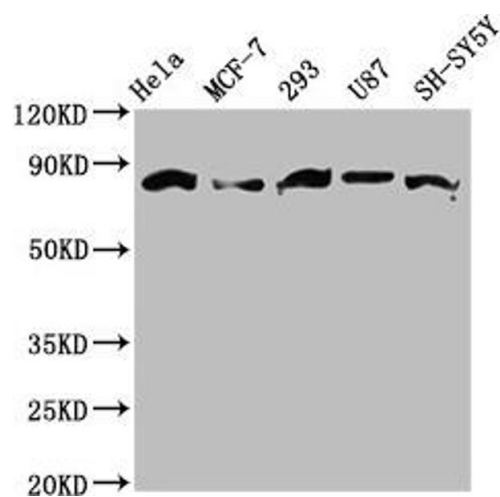
Buffer: Preservative: 0.03 % Proclin 300
Constituents: 50 % Glycerol, 0.01M PBS, pH 7.4

Preservative: ProClin

Precaution of Use: This product contains ProClin: a POISONOUS AND HAZARDOUS SUBSTANCE which should be handled by trained staff only.

Storage: -20 °C, -80 °C

Storage Comment: Upon receipt, store at -20°C or -80°C. Avoid repeated freeze.



Western Blotting

Image 1. Western Blot Positive WB detected in: Hela whole cell lysate, MCF-7 whole cell lysate, 293 whole cell lysate, U87 whole cell lysate, SH-SY5Y whole cell lysate All lanes: BARD1 antibody at 3.6 µg/mL Secondary Goat polyclonal to rabbit IgG at 1/50000 dilution Predicted band size: 87, 85, 76, 15 kDa Observed band size: 87 kDa