

Datasheet for ABIN7145800  
**anti-BAZ2B antibody (AA 139-240)**[Go to Product page](#)

## 3 Images

## Overview

Quantity:	100 µg
Target:	BAZ2B
Binding Specificity:	AA 139-240
Reactivity:	Human
Host:	Rabbit
Clonality:	Polyclonal
Conjugate:	This BAZ2B antibody is un-conjugated
Application:	ELISA, Immunohistochemistry (IHC), Immunofluorescence (IF)

## Product Details

Immunogen:	Recombinant Human Bromodomain adjacent to zinc finger domain protein 2B protein (139-240AA)
Isotype:	IgG
Cross-Reactivity:	Human
Purification:	>95%, Protein G purified

## Target Details

Target:	BAZ2B
Alternative Name:	BAZ2B ( <a href="#">BAZ2B Products</a> )
Background:	Background: May play a role in transcriptional regulation interacting with ISWI.

## Target Details

Aliases: BAZ2B antibody, BAZ2B\_HUMAN antibody, Bromodomain adjacent to zinc finger domain 2B antibody, Bromodomain adjacent to zinc finger domain protein 2B antibody, DKFZp434H071 antibody, DKFZp762I0516 antibody, FLJ45644 antibody, hWALp4 antibody, OTTHUMP00000162897 antibody, OTTHUMP00000162898 antibody, WALp4 antibody

UniProt: [Q9UIF8](#)

## Application Details

Application Notes: Recommended dilution: IHC:1:500-1:1000, IF:1:200-1:500,

Restrictions: For Research Use only

## Handling

Format: Liquid

Buffer: Preservative: 0.03 % Proclin 300  
Constituents: 50 % Glycerol, 0.01M PBS, pH 7.4

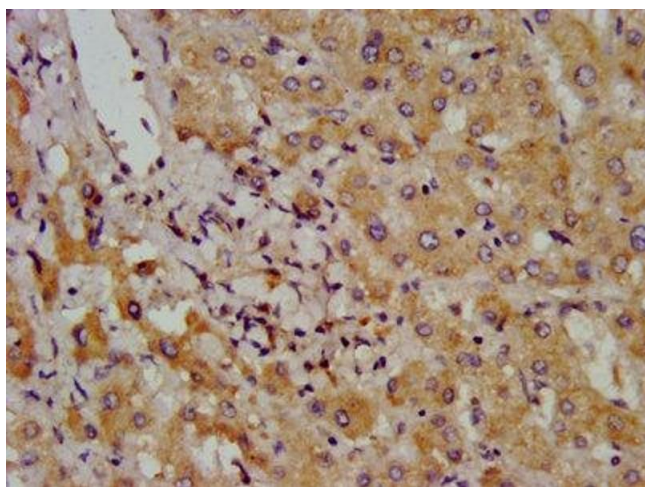
Preservative: ProClin

Precaution of Use: This product contains ProClin: a POISONOUS AND HAZARDOUS SUBSTANCE which should be handled by trained staff only.

Storage: -20 °C,-80 °C

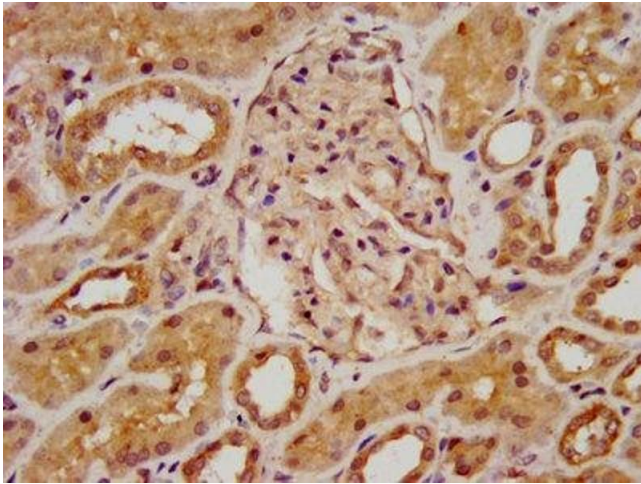
Storage Comment: Upon receipt, store at -20°C or -80°C. Avoid repeated freeze.

## Images



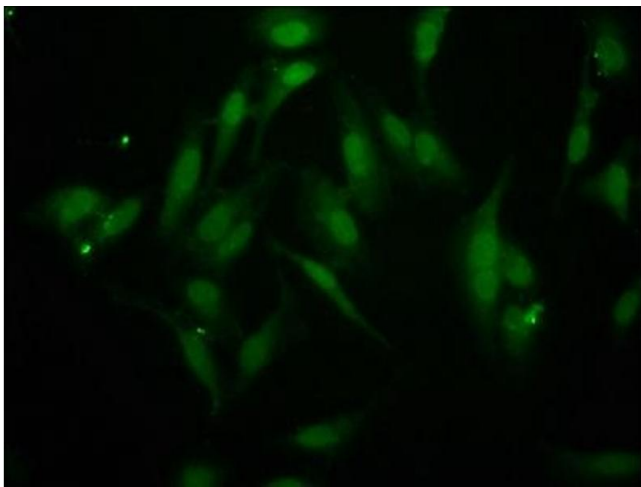
### Immunohistochemistry

**Image 1.** IHC image of ABIN7145800 diluted at 1:800 and staining in paraffin-embedded human liver cancer performed on a Leica Bond™ system. After dewaxing and hydration, antigen retrieval was mediated by high pressure in a citrate buffer (pH 6.0). Section was blocked with 10% normal goat serum 30min at RT. Then primary antibody (1% BSA) was incubated at 4°C overnight. The primary is detected by a biotinylated secondary antibody and visualized using an HRP conjugated SP system.



#### Immunohistochemistry

**Image 2.** IHC image of ABIN7145800 diluted at 1:800 and staining in paraffin-embedded human kidney tissue performed on a Leica Bond™ system. After dewaxing and hydration, antigen retrieval was mediated by high pressure in a citrate buffer (pH 6.0). Section was blocked with 10% normal goat serum 30min at RT. Then primary antibody (1% BSA) was incubated at 4°C overnight. The primary is detected by a biotinylated secondary antibody and visualized using an HRP conjugated SP system.



#### Immunofluorescence

**Image 3.** Immunofluorescence staining of HeLa cells with ABIN7145800 at 1:266, counter-stained with DAPI. The cells were fixed in 4 % formaldehyde, permeabilized using 0.2 % Triton X-100 and blocked in 10 % normal Goat Serum. The cells were then incubated with the antibody overnight at 4 °C. The secondary antibody was Alexa Fluor 488-conjugated AffiniPure Goat Anti-Rabbit IgG(H+L).