



[Go to Product page](#)

Datasheet for ABIN7145839
anti-KCTD15 antibody (AA 1-234)

3 Images

Overview

Quantity:	100 µL
Target:	KCTD15
Binding Specificity:	AA 1-234
Reactivity:	Human
Host:	Rabbit
Clonality:	Polyclonal
Conjugate:	This KCTD15 antibody is un-conjugated
Application:	Western Blotting (WB), ELISA, Immunohistochemistry (IHC)

Product Details

Immunogen:	Recombinant Human BTB/POZ domain-containing protein KCTD15 protein (1-234AA)
Isotype:	IgG
Cross-Reactivity:	Human
Purification:	Antigen Affinity Purified

Target Details

Target:	KCTD15
Alternative Name:	KCTD15 (KCTD15 Products)
Background:	Background: During embryonic development, interferes with neural crest formation (By similarity). Inhibits AP2 transcriptional activity by interaction with its activation domain.

Target Details

Aliases: BTB/POZ domain containing protein KCTD15 antibody, BTB/POZ domain-containing protein kctd15 antibody, KCD15_HUMAN antibody, KCTD 15 antibody, kctd15 antibody, MGC25497 antibody, MGC2628 antibody, Potassium channel tetramerisation domain containing 15 antibody

UniProt: [Q96S11](#)

Application Details

Application Notes: Recommended dilution: WB:1:500-1:2000, IHC:1:20-1:200,

Restrictions: For Research Use only

Handling

Format: Liquid

Buffer: PBS with 0.02 % sodium azide, 50 % glycerol, pH 7.3.

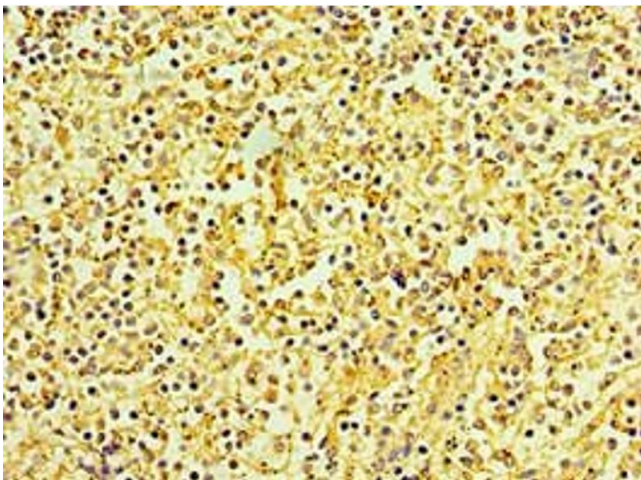
Preservative: Sodium azide

Precaution of Use: This product contains Sodium azide: a POISONOUS AND HAZARDOUS SUBSTANCE which should be handled by trained staff only.

Storage: -20 °C,-80 °C

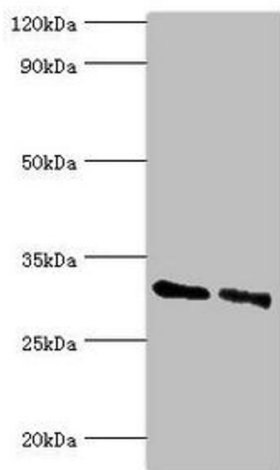
Storage Comment: Upon receipt, store at -20°C or -80°C. Avoid repeated freeze.

Images



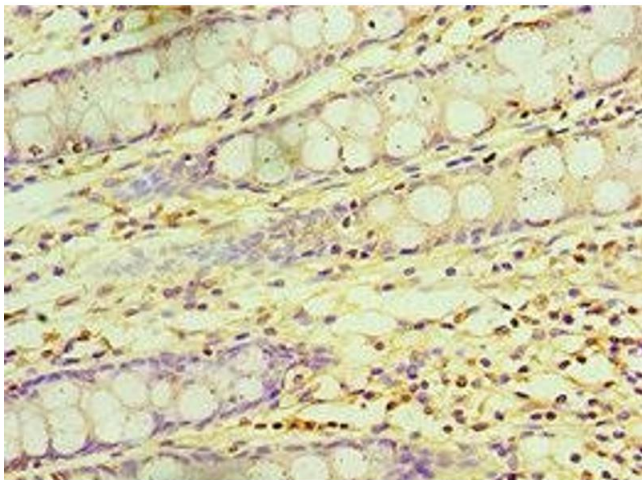
Immunohistochemistry

Image 1. Immunohistochemistry of paraffin-embedded human spleen tissue using ABIN7145839 at dilution of 1:100



Western Blotting

Image 2. Western blot All lanes: KCTD15 antibody at 8 μ g/mL Lane 1: 293T whole cell lysate Lane 2: Hela whole cell lysate Secondary Goat polyclonal to rabbit IgG at 1/10000 dilution Predicted band size: 32, 27 kDa Observed band size: 32 kDa



Immunohistochemistry

Image 3. Immunohistochemistry of paraffin-embedded human colon tissue using ABIN7145839 at dilution of 1:100