



Datasheet for ABIN7145856
anti-KCTD6 antibody (AA 1-237)



[Go to Product page](#)

2 Images

Overview

Quantity:	100 µg
Target:	KCTD6
Binding Specificity:	AA 1-237
Reactivity:	Human
Host:	Rabbit
Clonality:	Polyclonal
Conjugate:	This KCTD6 antibody is un-conjugated
Application:	ELISA, Immunohistochemistry (IHC)

Product Details

Immunogen:	Recombinant Human BTB/POZ domain-containing protein KCTD6 protein (1-237AA)
Isotype:	IgG
Cross-Reactivity:	Human
Purification:	>95%, Protein G purified

Target Details

Target:	KCTD6
Alternative Name:	KCTD6 (KCTD6 Products)
Background:	Background: Probable substrate-specific adapter of a BCR (BTB-CUL3-RBX1) E3 ubiquitin-protein ligase complex mediating the ubiquitination and subsequent proteasomal degradation

Target Details

of target proteins. Promotes the ubiquitination of HDAC1, the function seems to depend on KCTD11:KCTD6 oligomerization. Can function as antagonist of the Hedgehog pathway by affecting the nuclear transfer of transcription factor GLI1, the function probably occurs via HDAC1 down-regulation, keeping GLI1 acetylated and inactive. Inhibits cell growth and tumorigenicity of medulloblastoma (MDB) (PubMed:21472142). Involved in regulating protein levels of ANK1 isoform Mu17 probably implicating CUL3-dependent proteasomal degradation (PubMed:22573887).

Aliases: BTB/POZ domain-containing protein KCTD6 antibody, KCASH3 antibody, kctd6 antibody, KCTD6_HUMAN antibody, MGC27385 antibody, potassium channel tetramerization domain containing 6 antibody

UniProt: [Q8NC69](#)

Application Details

Application Notes: Recommended dilution: IHC:1:20-1:200,

Restrictions: For Research Use only

Handling

Format: Liquid

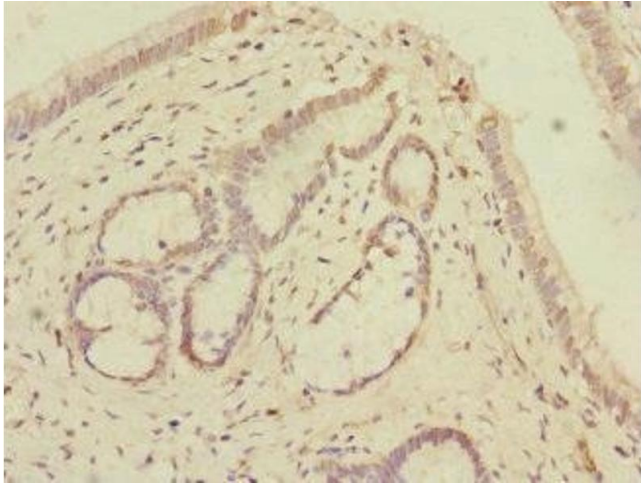
Buffer: Preservative: 0.03 % Proclin 300
Constituents: 50 % Glycerol, 0.01M PBS, PH 7.4

Preservative: ProClin

Precaution of Use: This product contains ProClin: a POISONOUS AND HAZARDOUS SUBSTANCE which should be handled by trained staff only.

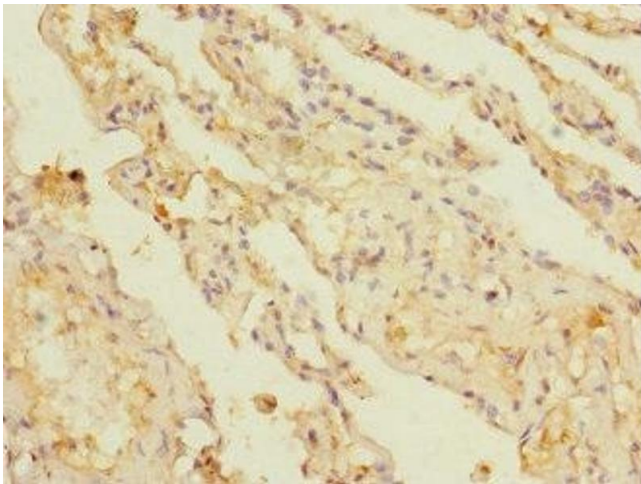
Storage: -20 °C,-80 °C

Storage Comment: Upon receipt, store at -20°C or -80°C. Avoid repeated freeze.



Immunohistochemistry

Image 1. Immunohistochemistry of paraffin-embedded human pancreatic tissue using ABIN7145856 at dilution of 1:100



Immunohistochemistry

Image 2. Immunohistochemistry of paraffin-embedded human lung tissue using ABIN7145856 at dilution of 1:100