



[Go to Product page](#)

Datasheet for ABIN7145881

## anti-BTN2A2 antibody (AA 33-262)

### 2 Images

#### Overview

Quantity:	100 µg
Target:	BTN2A2
Binding Specificity:	AA 33-262
Reactivity:	Human
Host:	Rabbit
Clonality:	Polyclonal
Conjugate:	This BTN2A2 antibody is un-conjugated
Application:	ELISA, Western Blotting (WB), Immunohistochemistry (IHC)

#### Product Details

Immunogen:	Recombinant Human Butyrophilin subfamily 2 member A2 protein (33-262AA)
Isotype:	IgG
Cross-Reactivity:	Human, Mouse
Purification:	>95%, Protein G purified

#### Target Details

Target:	BTN2A2
Alternative Name:	BTN2A2 ( <a href="#">BTN2A2 Products</a> )
Background:	Background: Inhibits the proliferation of CD4 and CD8 T-cells activated by anti-CD3 antibodies, T-cell metabolism and IL2 and IFNG secretion.

## Target Details

Aliases: BT2.2 antibody, BT2A2\_HUMAN antibody, BTF2 antibody, BTN2A2 antibody, butyrophilin 2 antibody, Butyrophilin subfamily 2 member A2 antibody

UniProt: [Q8WVV5](#)

Pathways: [Activated T Cell Proliferation](#)

## Application Details

Application Notes: Recommended dilution: WB:1:500-1:2000, IHC:1:20-1:200,

Restrictions: For Research Use only

## Handling

Format: Liquid

Buffer: Preservative: 0.03 % Proclin 300  
Constituents: 50 % Glycerol, 0.01M PBS, PH 7.4

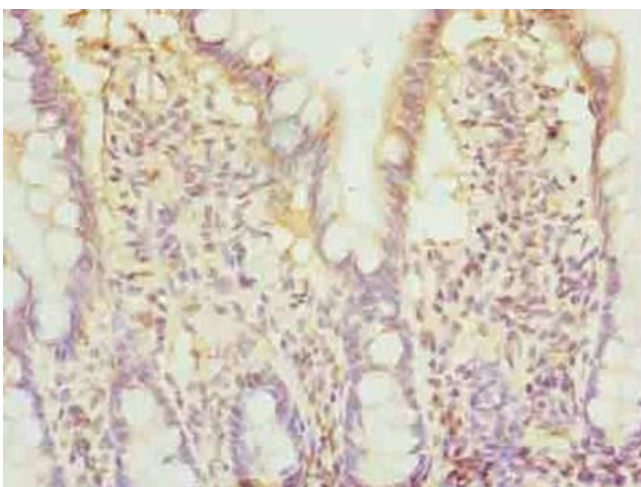
Preservative: ProClin

Precaution of Use: This product contains ProClin: a POISONOUS AND HAZARDOUS SUBSTANCE which should be handled by trained staff only.

Storage: -20 °C,-80 °C

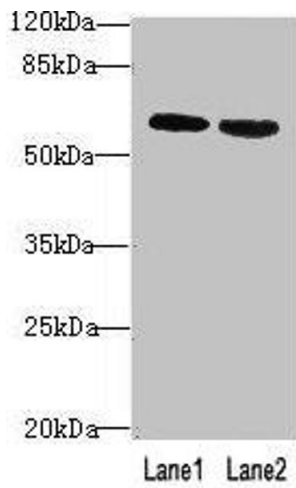
Storage Comment: Upon receipt, store at -20°C or -80°C. Avoid repeated freeze.

## Images



### Immunohistochemistry

**Image 1.** Immunohistochemistry of paraffin-embedded human small intestine tissue using ABIN7145881 at dilution of 1:100



### Western Blotting

**Image 2.** Western blot All lanes: BTN2A2 antibody at 10  $\mu$ g/mL Lane 1: MCF-7 whole cell lysate Lane 2: NIH/3T3 whole cell lysate Secondary Goat polyclonal to rabbit IgG at 1/10000 dilution Predicted band size: 60, 38, 29, 46, 36 kDa Observed band size: 60 kDa