



[Go to Product page](#)

Datasheet for ABIN7145942
anti-CCR7 antibody (AA 332-378)

3 Images

Overview

Quantity:	100 µg
Target:	CCR7
Binding Specificity:	AA 332-378
Reactivity:	Human
Host:	Rabbit
Clonality:	Polyclonal
Conjugate:	This CCR7 antibody is un-conjugated
Application:	ELISA, Immunohistochemistry (IHC), Immunofluorescence (IF)

Product Details

Immunogen:	Recombinant Human C-C chemokine receptor type 7 protein (332-378AA)
Isotype:	IgG
Cross-Reactivity:	Human
Purification:	>95%, Protein G purified

Target Details

Target:	CCR7
Alternative Name:	CCR7 (CCR7 Products)
Background:	Background: Receptor for the MIP-3-beta chemokine. Probable mediator of EBV effects on B-lymphocytes or of normal lymphocyte functions.

Target Details

Aliases: BLR 2 antibody, BLR2 antibody, C C chemokine receptor type 7 antibody, C C CKR 7 antibody, C-C chemokine receptor type 7 antibody, C-C CKR-7 antibody, CC chemokine receptor 7 antibody, CC chemokine receptor type 7 antibody, CC CKR 7 antibody, CC-CKR-7 antibody, CCCR7 antibody, CCR 7 antibody, CCR-7 antibody, Ccr7 antibody, CCR7_HUMAN antibody, CD 197 antibody, CD197 antibody, CD197 antigen antibody, CDw197 antibody, Chemokine (C C motif) receptor 7 antibody, Chemokine (C C) receptor 7 antibody, Chemokine C C motif receptor 7 antibody, Chemokine C C receptor 7 antibody, Chemokine receptor 7 antibody, Chemokine receptor 7-like protein antibody, CMKBR7 antibody, EBI 1 antibody, EBI1 antibody, Ebi1h antibody, EBV Induced G Protein Coupled Receptor 1 antibody, EBV-induced G-protein coupled receptor 1 antibody, Epstein Barr virus induced G protein coupled receptor antibody, Epstein Barr virus induced gene 1 antibody, Epstein-Barr virus-induced G-protein coupled receptor 1 antibody, EVI 1 antibody, EVI1 antibody, Lymphocyte Specific G Protein Coupled Peptide Receptor antibody, MGC108519 antibody, MIP 3 beta receptor antibody, MIP-3 beta receptor antibody, MIP3 Beta Receptor antibody

UniProt: [P32248](#)

Pathways: [Regulation of Actin Filament Polymerization](#), [Positive Regulation of Immune Effector Process](#)

Application Details

Application Notes: Recommended dilution: IHC:1:20-1:200, IF:1:50-1:200,

Restrictions: For Research Use only

Handling

Format: Liquid

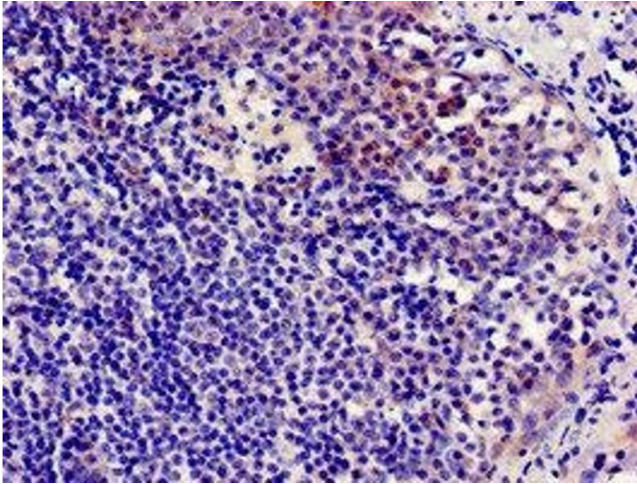
Buffer: Preservative: 0.03 % Proclin 300
Constituents: 50 % Glycerol, 0.01M PBS, pH 7.4

Preservative: ProClin

Precaution of Use: This product contains ProClin: a POISONOUS AND HAZARDOUS SUBSTANCE which should be handled by trained staff only.

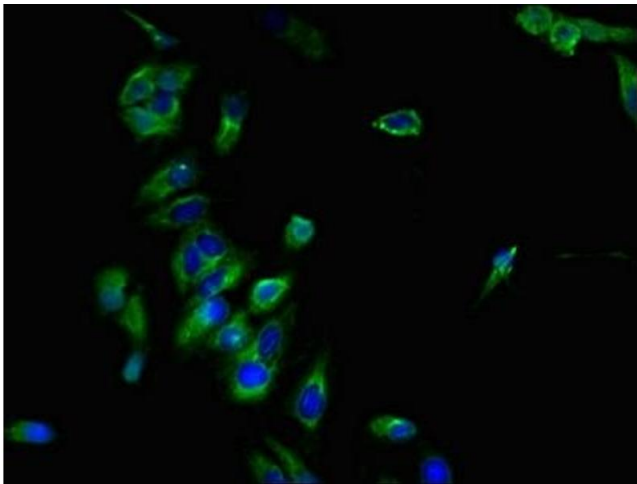
Storage: -20 °C,-80 °C

Storage Comment: Upon receipt, store at -20°C or -80°C. Avoid repeated freeze.



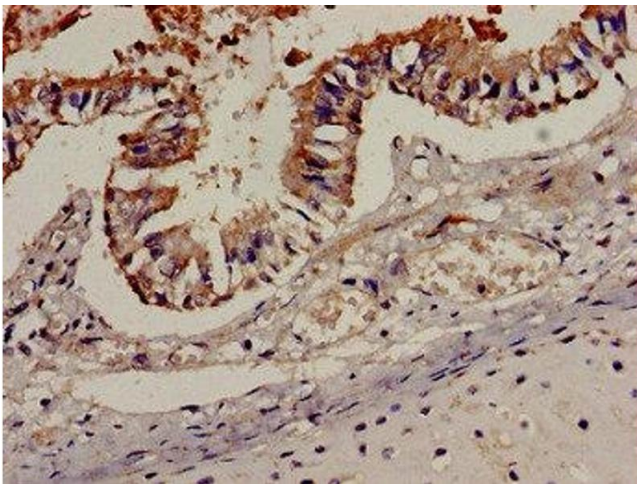
Immunocytochemistry

Image 1. Immunocytochemistry analysis of human tonsil tissue using ABIN7145942 at dilution of 1:100



Immunofluorescence

Image 2. Immunofluorescent analysis of Hela cells using ABIN7145942 at dilution of 1:100 and Alexa Fluor 488-conjugated AffiniPure Goat Anti-Rabbit IgG(H+L)



Immunohistochemistry

Image 3. Immunohistochemistry analysis of human lung tissue using ABIN7145942 at dilution of 1:100