



[Go to Product page](#)

Datasheet for ABIN7145946
anti-CCRL2 antibody (AA 1-43)

2 Images

Overview

| | |
|----------------------|--|
| Quantity: | 100 µg |
| Target: | CCRL2 |
| Binding Specificity: | AA 1-43 |
| Reactivity: | Human |
| Host: | Rabbit |
| Clonality: | Polyclonal |
| Conjugate: | This CCRL2 antibody is un-conjugated |
| Application: | Western Blotting (WB), ELISA, Immunohistochemistry (IHC) |

Product Details

| | |
|-------------------|--|
| Immunogen: | Recombinant Human C-C chemokine receptor-like 2 protein (1-43AA) |
| Isotype: | IgG |
| Cross-Reactivity: | Human |
| Purification: | >95%, Protein G purified |

Target Details

| | |
|-------------------|--|
| Target: | CCRL2 |
| Alternative Name: | CCRL2 (CCRL2 Products) |
| Background: | Background: Receptor for CCL19 and chemerin/RARRES2. Does not appear to be a signaling receptor, but may have a role in modulating chemokine-triggered immune responses by |

Target Details

capturing and internalizing CCL19 or by presenting RARRES2 ligand to CMKLR1, a functional signaling receptors. Plays a critical role for the development of Th2 responses.

Aliases: C-C chemokine receptor-like 2 antibody, CCRL2 antibody, CCRL2_HUMAN antibody, Chemokine (C-C motif) receptor like 2 antibody, Chemokine receptor CCR11 antibody, Chemokine receptor X antibody, CKRX antibody, CRAM A antibody, CRAM B antibody, CRAMA antibody, CRAMB antibody, FLJ55815 antibody, HCR antibody, MGC116710 antibody, MGC34104 antibody, Putative MCP 1 chemokine receptor antibody, Putative MCP-1 chemokine receptor antibody

UniProt: [O00421](#)

Application Details

Application Notes: Recommended dilution: WB:1:500-1:5000, IHC:1:20-1:200,

Restrictions: For Research Use only

Handling

Format: Liquid

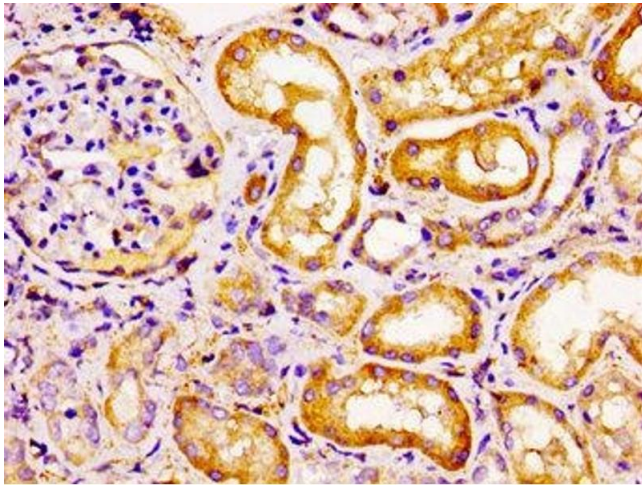
Buffer: Preservative: 0.03 % Proclin 300
Constituents: 50 % Glycerol, 0.01M PBS, pH 7.4

Preservative: ProClin

Precaution of Use: This product contains ProClin: a POISONOUS AND HAZARDOUS SUBSTANCE which should be handled by trained staff only.

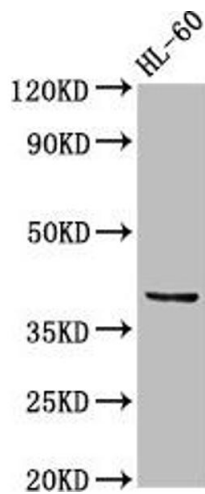
Storage: -20 °C,-80 °C

Storage Comment: Upon receipt, store at -20°C or -80°C. Avoid repeated freeze.



Immunohistochemistry

Image 1. Immunohistochemistry of paraffin-embedded human kidney tissue using ABIN7145946 at dilution of 1:100



Western Blotting

Image 2. Western Blot Positive WB detected in: HL60 whole cell lysate All lanes: CCRL2 antibody at 2.5 µg/mL Secondary Goat polyclonal to rabbit IgG at 1/50000 dilution Predicted band size: 40, 41 kDa Observed band size: 40 kDa