



[Go to Product page](#)

Datasheet for ABIN7145950
anti-CCL13 antibody (AA 17-81)

1 Image

Overview

Quantity:	100 µg
Target:	CCL13
Binding Specificity:	AA 17-81
Reactivity:	Human
Host:	Rabbit
Clonality:	Polyclonal
Conjugate:	This CCL13 antibody is un-conjugated
Application:	ELISA, Immunohistochemistry (IHC)

Product Details

Immunogen:	Recombinant Human C-C motif chemokine 13 protein (17-81AA)
Isotype:	IgG
Cross-Reactivity:	Human
Purification:	>95%, Protein G purified

Target Details

Target:	CCL13
Alternative Name:	CCL13 (CCL13 Products)
Background:	Background: Chemotactic factor that attracts monocytes, lymphocytes, basophils and eosinophils, but not neutrophils. Signals through CCR2B and CCR3 receptors. Plays a role in the

Target Details

accumulation of leukocytes at both sides of allergic and non-allergic inflammation. May be involved in the recruitment of monocytes into the arterial wall during the disease process of atherosclerosis. May play a role in the monocyte attraction in tissues chronically exposed to exogenous pathogens.

Aliases: C-C motif chemokine 13 antibody, CCL13 antibody, CCL13_HUMAN antibody, Chemokine (C C motif) ligand 13 antibody, CK beta 10 antibody, CK-beta-10 antibody, CKb10 antibody, MCP-4 antibody, MGC17134 antibody, Monocyte chemoattractant protein 4 antibody, Monocyte chemotactic protein 4 antibody, NCC 1 antibody, NCC-1 antibody, NCC1 antibody, New CC chemokine 1 antibody, SCYA13 antibody, SCYL1 antibody, short chain antibody, Small inducible cytokine A13 precursor antibody, Small inducible cytokine subfamily A (Cys Cys) member 13 antibody, Small-inducible cytokine A13 antibody

UniProt: [Q99616](#)

Pathways: [Regulation of Systemic Arterial Blood Pressure by Hormones](#), [The Global Phosphorylation Landscape of SARS-CoV-2 Infection](#)

Application Details

Application Notes: Recommended dilution: IHC:1:20-1:200,

Restrictions: For Research Use only

Handling

Format: Liquid

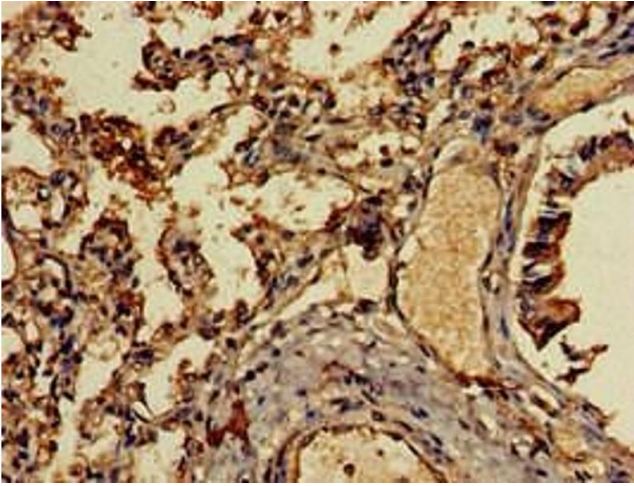
Buffer: Preservative: 0.03 % Proclin 300
Constituents: 50 % Glycerol, 0.01M PBS, pH 7.4

Preservative: ProClin

Precaution of Use: This product contains ProClin: a POISONOUS AND HAZARDOUS SUBSTANCE which should be handled by trained staff only.

Storage: -20 °C,-80 °C

Storage Comment: Upon receipt, store at -20°C or -80°C. Avoid repeated freeze.



Immunohistochemistry

Image 1. Immunohistochemistry of paraffin-embedded human lung tissue using ABIN7145950 at dilution of 1:100