



[Go to Product page](#)

Datasheet for ABIN7145998

anti-CCL3 antibody (AA 25-81)

3 Images

Overview

Quantity:	100 µg
Target:	CCL3
Binding Specificity:	AA 25-81
Reactivity:	Human
Host:	Rabbit
Clonality:	Polyclonal
Conjugate:	This CCL3 antibody is un-conjugated
Application:	Western Blotting (WB), ELISA, Immunohistochemistry (IHC)

Product Details

Immunogen:	Recombinant Human C-C motif chemokine 3 protein (25-81AA)
Isotype:	IgG
Cross-Reactivity:	Human, Mouse
Purification:	>95%, Protein G purified

Target Details

Target:	CCL3
Alternative Name:	CCL3 (CCL3 Products)
Background:	Background: Monokine with inflammatory and chemokinetic properties. Binds to CCR1, CCR4 and CCR5. One of the major HIV-suppressive factors produced by CD8+ T-cells. Recombinant

Target Details

MIP-1-alpha induces a dose-dependent inhibition of different strains of HIV-1, HIV-2, and simian immunodeficiency virus (SIV).

Aliases: C C motif chemokine 3 antibody, CCL 3 antibody, CCL3 antibody, CCL3_HUMAN antibody, Chemokine (C C motif) ligand 3 antibody, Chemokine C C motif ligand 3 antibody, Chemokine ligand 3 antibody, G0/G1 switch regulatory protein 19 1 antibody, G0/G1 switch regulatory protein 19-1 antibody, G0S19 1 antibody, G0S19 1 protein antibody, Heparin binding chemotaxis protein antibody, L2G25B antibody, LD78 alpha antibody, LD78-alpha(4-69) antibody, LD78alpha antibody, Macrophage inflammatory protein 1 alpha antibody, Macrophage inflammatory protein 1-alpha antibody, macrophage inflammatory protein 1a antibody, MIP 1 alpha antibody, MIP 1A antibody, MIP-1-alpha antibody, MIP-1-alpha(4-69) antibody, MIP1 alpha antibody, MIP1A antibody, PAT 464.1 antibody, SCYA 3 antibody, SCYA3 antibody, SIS alpha antibody, SIS beta antibody, SIS-beta antibody, Small inducible cytokine A3 antibody, small inducible cytokine A3 (homologous to mouse Mip-1a) antibody, Small-inducible cytokine A3 antibody, Tonsillar lymphocyte LD78 alpha protein antibody

UniProt: [P10147](#)

Pathways: [Cellular Response to Molecule of Bacterial Origin, Autophagy](#)

Application Details

Application Notes: Recommended dilution: WB:1:500-1:5000, IHC:1:20-1:200,

Restrictions: For Research Use only

Handling

Format: Liquid

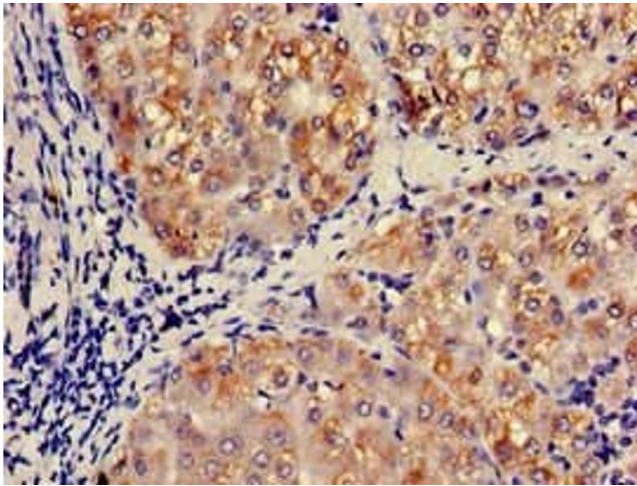
Buffer: Preservative: 0.03 % Proclin 300
Constituents: 50 % Glycerol, 0.01M PBS, pH 7.4

Preservative: ProClin

Precaution of Use: This product contains ProClin: a POISONOUS AND HAZARDOUS SUBSTANCE which should be handled by trained staff only.

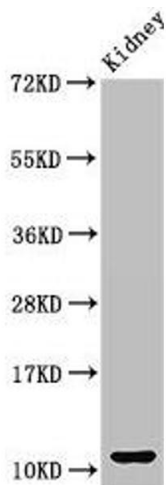
Storage: -20 °C,-80 °C

Storage Comment: Upon receipt, store at -20°C or -80°C. Avoid repeated freeze.



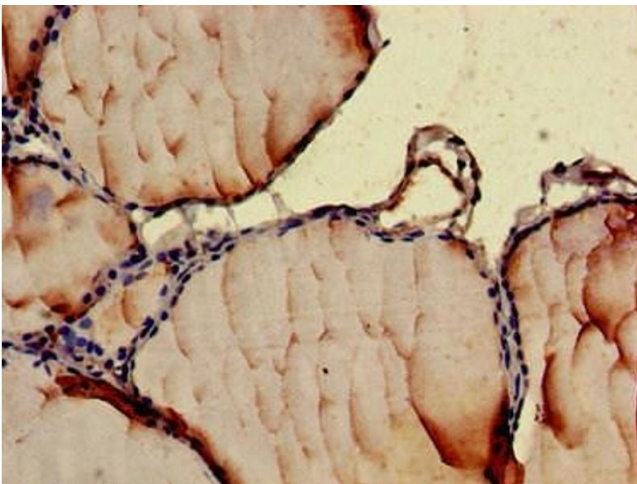
Immunohistochemistry

Image 1. Immunohistochemistry of paraffin-embedded human liver tissue using ABIN7145998 at dilution of 1:100



Western Blotting

Image 2. Western Blot Positive WB detected in: Mouse kidney tissue All lanes: CCL3 antibody at 3 µg/mL Secondary Goat polyclonal to rabbit IgG at 1/50000 dilution Predicted band size: 11 kDa Observed band size: 11 kDa



Immunohistochemistry

Image 3. Immunohistochemistry of paraffin-embedded human thyroid tissue using ABIN7145998 at dilution of 1:100