



[Go to Product page](#)

Datasheet for ABIN7146002  
**anti-CCL4 antibody (AA 24-84)**

1 Image

### Overview

Quantity:	100 µg
Target:	CCL4
Binding Specificity:	AA 24-84
Reactivity:	Human
Host:	Rabbit
Clonality:	Polyclonal
Conjugate:	This CCL4 antibody is un-conjugated
Application:	ELISA, Immunohistochemistry (IHC)

### Product Details

Immunogen:	Recombinant Human C-C motif chemokine 4 protein (24-84AA)
Isotype:	IgG
Cross-Reactivity:	Human
Purification:	>95%, Protein G purified

### Target Details

Target:	CCL4
Alternative Name:	CCL4 ( <a href="#">CCL4 Products</a> )
Background:	Background: Monokine with inflammatory and chemokinetic properties. Binds to CCR5. One of the major HIV-suppressive factors produced by CD8+ T-cells. Recombinant MIP-1-beta induces

## Target Details

---

a dose-dependent inhibition of different strains of HIV-1, HIV-2, and simian immunodeficiency virus (SIV). The processed form MIP-1-beta(3-69) retains the abilities to induce down-modulation of surface expression of the chemokine receptor CCR5 and to inhibit the CCR5-mediated entry of HIV-1 in T-cells. MIP-1-beta(3-69) is also a ligand for CCR1 and CCR2 isoform B.

Aliases: MIP 1 beta antibody, Secreted protein G 26 antibody, ACT 2 antibody, ACT-2 antibody, ACT2 antibody, AT744.1 antibody, AT744.2 antibody, C C motif chemokine 4 antibody, C C motif chemokine 4 like antibody, C C motif chemokine ligand 4 like 1 antibody, C C motif chemokine ligand 4 like 2 antibody, CC chemokine ligand 4 antibody, CC chemokine ligand 4L1 antibody, CC chemokine ligand 4L1d2 antibody, CC chemokine ligand 4L2 antibody, CCL4 antibody, CCL4\_HUMAN antibody, ccl4l1 antibody, CCL4L antibody, CCL4L1 antibody, Chemokine (C C motif) ligand 4 antibody, Chemokine (C C motif) ligand 4 like 1 antibody, Chemokine (C C motif) ligand 4 like 1, telomeric antibody, Chemokine (C C motif) ligand 4 like 2 antibody, Chemokine CC Motif Ligand 4 antibody, G 26 antibody, G 26 T lymphocyte secreted protein antibody, G-26 T-lymphocyte-secreted protein antibody, HC21 antibody, Immune activation 2 antibody, LAG 1 antibody, LAG-1 antibody, LAG1 antibody, Lymphocyte activation gene 1 antibody, Lymphocyte activation gene 1 protein antibody, Macrophage inflammatory protein 1 beta antibody, Macrophage inflammatory protein 1-beta antibody, Macrophage inflammatory protein 1b2 antibody, MGC104418 antibody, MGC126025 antibody, MGC126026 antibody, MIP-1-beta antibody, MIP-1-beta(1-69) antibody, MIP-1-beta(3-69) antibody, MIP1 beta antibody, MIP1B antibody, MIP1B1 antibody, Monocyte adherence induced protein 5 alpha antibody, PAT 744 antibody, Protein H400 antibody, SCYA2 antibody, SCYA4 antibody, SCYA4L antibody, SCYA4L1 antibody, SCYA4L2 antibody, SCYQ4L2 antibody, Secreted protein G 26 antibody, Secreted protein G26 antibody, SIS gamma antibody, SIS-gamma antibody, Small inducible cytokine A4 (homologous to mouse Mip 1b) antibody, Small inducible cytokine A4 antibody, small inducible cytokine A4-like antibody, Small-inducible cytokine A4 antibody, T cell activation protein 2 antibody, T-cell activation protein 2 antibody

---

UniProt: [P13236](#)

## Application Details

---

Application Notes: Recommended dilution: IHC:1:20-1:200,

---

Restrictions: For Research Use only

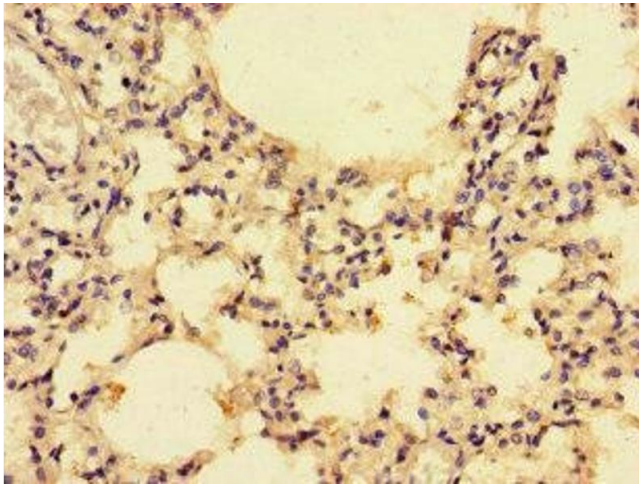
## Handling

---

Format:	Liquid
Buffer:	Preservative: 0.03 % Proclin 300 Constituents: 50 % Glycerol, 0.01M PBS, PH 7.4
Preservative:	ProClin
Precaution of Use:	This product contains ProClin: a POISONOUS AND HAZARDOUS SUBSTANCE which should be handled by trained staff only.
Storage:	-20 °C,-80 °C
Storage Comment:	Upon receipt, store at -20°C or -80°C. Avoid repeated freeze.

## Images

---



### Immunohistochemistry

**Image 1.** Immunohistochemistry of paraffin-embedded human lung tissue using ABIN7146002 at dilution of 1:100