



[Go to Product page](#)

Datasheet for ABIN7146036  
**anti-CRP antibody (AA 19-224)**

2 Images

### Overview

Quantity:	100 µg
Target:	CRP
Binding Specificity:	AA 19-224
Reactivity:	Human
Host:	Rabbit
Clonality:	Polyclonal
Conjugate:	This CRP antibody is un-conjugated
Application:	Western Blotting (WB), ELISA, Immunohistochemistry (IHC)

### Product Details

Immunogen:	Recombinant Human C-reactive protein (19-224AA)
Isotype:	IgG
Cross-Reactivity:	Human
Purification:	>95%, Protein G purified

### Target Details

Target:	CRP
Alternative Name:	CRP ( <a href="#">CRP Products</a> )
Background:	Background: CRP2 is a novel substrate of cGKI in neurons and smooth muscle of the small intestine.

## Target Details

Aliases: Pentraxin 1, short antibody, C reactive protein antibody, C reactive protein pentraxin related antibody, C-reactive protein(1-205) antibody, CRP antibody, CRP\_HUMAN antibody, MGC88244 antibody, Pentraxin 1 antibody, PTX 1 antibody, PTX1 antibody

UniProt: [P02741](#)

Pathways: [Carbohydrate Homeostasis](#)

## Application Details

Application Notes: Recommended dilution: WB:1:1000-1:5000, IHC:1:20-1:200,

Restrictions: For Research Use only

## Handling

Format: Liquid

Buffer: Preservative: 0.03 % Proclin 300  
Constituents: 50 % Glycerol, 0.01M PBS, PH 7.4

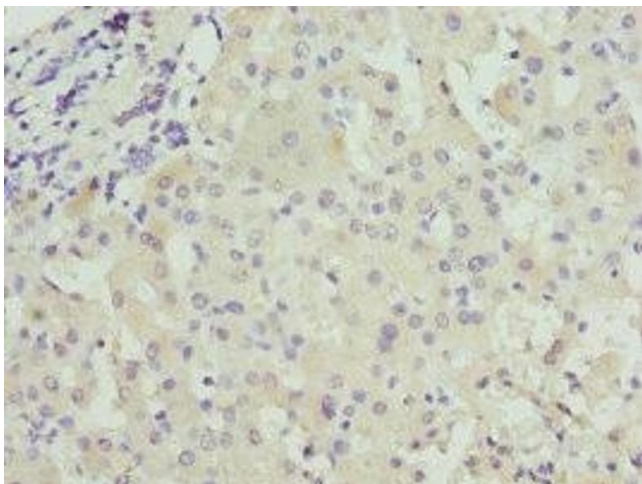
Preservative: ProClin

Precaution of Use: This product contains ProClin: a POISONOUS AND HAZARDOUS SUBSTANCE which should be handled by trained staff only.

Storage: -20 °C,-80 °C

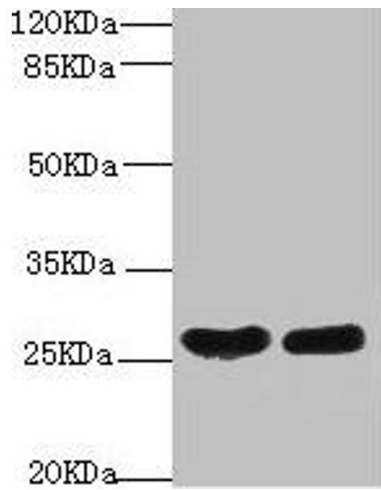
Storage Comment: Upon receipt, store at -20°C or -80°C. Avoid repeated freeze.

## Images



### Immunohistochemistry

**Image 1.** Immunohistochemistry of paraffin-embedded human liver cancer using ABIN7146036 at dilution of 1:100



### Western Blotting

**Image 2.** Western blot All lanes: CRP antibody at 2 µg/mL  
Lane 1: High values of serum at 1: 5 Lane 2: High values of serum at 1: 10 Secondary Goat polyclonal to rabbit IgG at 1/10000 dilution Predicted band size: 26, 11 kDa Observed band size: 26 kDa