

Datasheet for ABIN7146046
anti-CLEC1A antibody (AA 66-316)[Go to Product page](#)

2 Images

Overview

Quantity:	100 µL
Target:	CLEC1A
Binding Specificity:	AA 66-316
Reactivity:	Human
Host:	Rabbit
Clonality:	Polyclonal
Conjugate:	This CLEC1A antibody is un-conjugated
Application:	ELISA, Immunohistochemistry (IHC), Immunofluorescence (IF)

Product Details

Immunogen:	Recombinant Human C-type lectin domain family 10 member A protein (66-316AA)
Isotype:	IgG
Cross-Reactivity:	Human
Purification:	Antigen Affinity Purified

Target Details

Target:	CLEC1A
Alternative Name:	CLEC1A (CLEC1A Products)
Background:	Background: Probable role in regulating adaptive and innate immune responses. Binds in a calcium-dependent manner to terminal galactose and N-acetylgalactosamine units, linked to

Target Details

serine or threonine. These sugar moieties are known as Tn-Ag and are expressed in a variety of carcinoma cells.

Aliases: C type (calcium dependent carbohydrate recognition domain) lectin superfamily member 13 (macrophage derived) antibody, C type (calcium dependent carbohydrate recognition domain) lectin superfamily member 14 (macrophage derived) antibody, C type lectin domain family 10, member A antibody, C type lectin superfamily member 14 antibody, C-type lectin domain family 10 member A antibody, C-type lectin superfamily member 14 antibody, CD301 antibody, CD301 antigen antibody, CD301A antibody, CLC10_HUMAN antibody, CLEC10A antibody, CLECSF13 antibody, CLECSF14 antibody, HML antibody, HML2 antibody, Lectin antibody, Macrophage C type lectin antibody, MACROPHAGE GALACTOSE-TYPE C-TYPE antibody, Macrophage lectin 2 (calcium dependent) antibody, Macrophage lectin 2 antibody, MGL antibody, Mgl1 antibody

UniProt: [Q8IUN9](#)

Application Details

Application Notes: Recommended dilution: IHC:1:20-1:200, IF:1:50-1:200,

Restrictions: For Research Use only

Handling

Format: Liquid

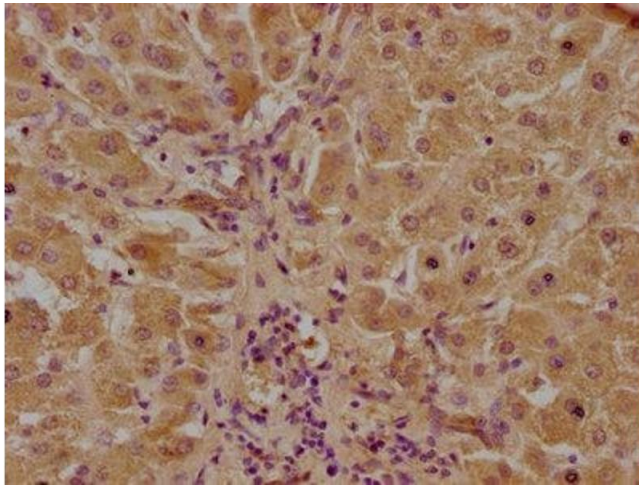
Buffer: Preservative: 0.03 % Proclin 300
Constituents: 50 % Glycerol, 0.01M PBS, pH 7.4

Preservative: ProClin

Precaution of Use: This product contains ProClin: a POISONOUS AND HAZARDOUS SUBSTANCE which should be handled by trained staff only.

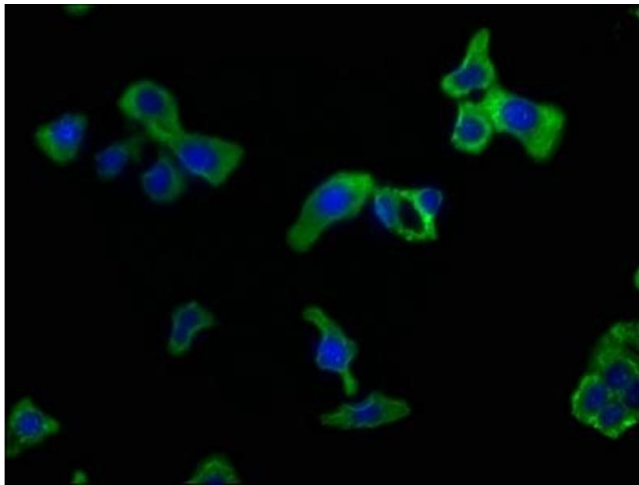
Storage: -20 °C, -80 °C

Storage Comment: Upon receipt, store at -20°C or -80°C. Avoid repeated freeze.



Immunohistochemistry

Image 1. IHC image of ABIN7146046 diluted at 1:100 and staining in paraffin-embedded human liver tissue performed on a Leica Bond™ system. After dewaxing and hydration, antigen retrieval was mediated by high pressure in a citrate buffer (pH 6.0). Section was blocked with 10 % normal goat serum 30 min at RT. Then primary antibody (1 % BSA) was incubated at 4 °C overnight. The primary is detected by a biotinylated secondary antibody and visualized using an HRP conjugated SP system.



Immunofluorescence

Image 2. Immunofluorescence staining of HepG2 cells with ABIN7146046 at 1:50, counter-stained with DAPI. The cells were fixed in 4 % formaldehyde, permeabilized using 0.2 % Triton X-100 and blocked in 10 % normal Goat Serum. The cells were then incubated with the antibody overnight at 4 °C. The secondary antibody was Alexa Fluor 488-conjugated AffiniPure Goat Anti-Rabbit IgG(H+L).