

Datasheet for ABIN7146077

anti-CLEC4E antibody (AA 41-219)



[Go to Product page](#)

3 Images

Overview

Quantity:	100 µg
Target:	CLEC4E
Binding Specificity:	AA 41-219
Reactivity:	Human
Host:	Rabbit
Clonality:	Polyclonal
Conjugate:	This CLEC4E antibody is un-conjugated
Application:	ELISA, Immunofluorescence (IF), Immunohistochemistry (IHC)

Product Details

Immunogen:	Recombinant Human C-type lectin domain family 4 member E protein (41-219AA)
Isotype:	IgG
Cross-Reactivity:	Human
Purification:	>95%, Protein G purified

Target Details

Target:	CLEC4E
Alternative Name:	CLEC4E (CLEC4E Products)
Background:	Background: C-type lectin that functions as cell-surface receptor for a wide variety of ligands such as damaged cells, fungi and mycobacteria. Plays a role in the recognition of pathogenic

Target Details

fungi, such as Candida albicans. The detection of mycobacteria is via trehalose 6,6'-dimycolate (TDM), a cell wall glycolipid. Specifically recognizes alpha-mannose residues on pathogenic fungi of the genus Malassezia. Recognizes also SAP130, a nuclear protein, that is released by dead or dying cells. Transduces signals through an ITAM-containing adapter protein, Fc receptor gamma chain /FCER1G. Induces secretion of inflammatory cytokines through a pathway that depends on SYK, CARD9 and NF-kappa-B.

Aliases: C type lectin domain family 4 member E antibody, C type lectin superfamily member 9 antibody, C-type (calcium dependent carbohydrate recognition domain) lectin superfamily member 9 antibody, C-type lectin domain family 4 member E antibody, C-type lectin superfamily member 9 antibody, CLC4E_HUMAN antibody, CLEC 4E antibody, Clec4e antibody, CLECSF9 antibody, Macrophage inducible C type lectin antibody, Macrophage-inducible C-type lectin antibody, MINCLE antibody

UniProt: [Q9ULY5](#)

Application Details

Application Notes: Recommended dilution: IHC:1:500-1:1000, IF:1:200-1:500,

Restrictions: For Research Use only

Handling

Format: Liquid

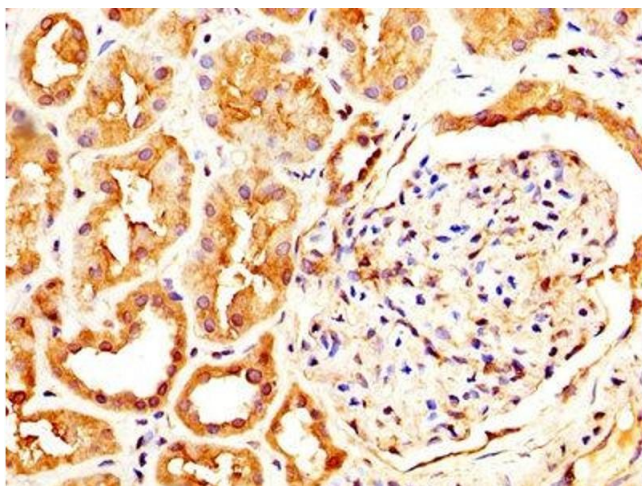
Buffer: Preservative: 0.03 % Proclin 300
Constituents: 50 % Glycerol, 0.01M PBS, PH 7.4

Preservative: ProClin

Precaution of Use: This product contains ProClin: a POISONOUS AND HAZARDOUS SUBSTANCE which should be handled by trained staff only.

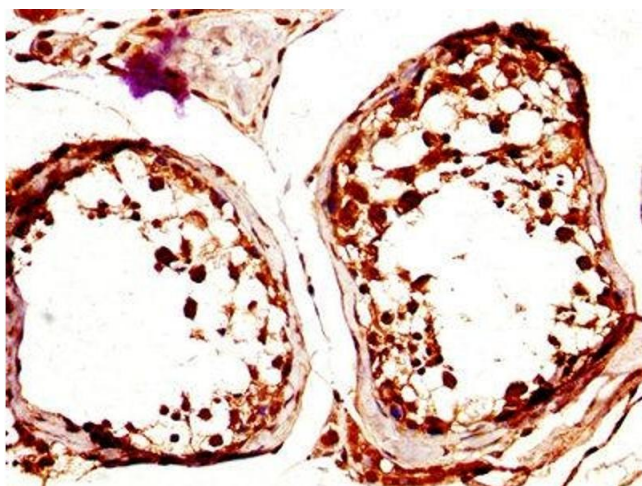
Storage: -20 °C,-80 °C

Storage Comment: Upon receipt, store at -20°C or -80°C. Avoid repeated freeze.



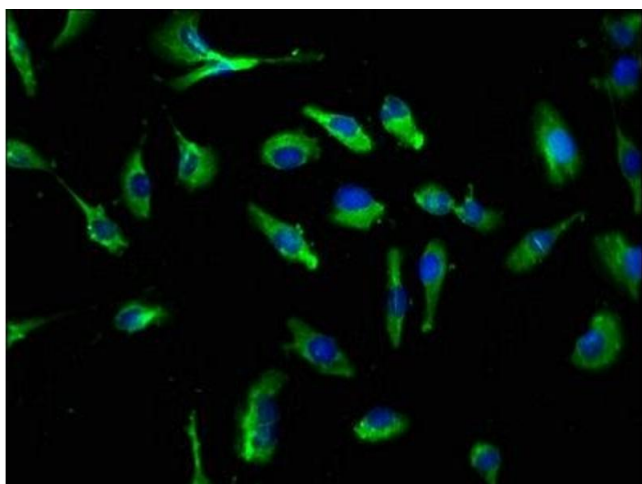
Immunohistochemistry

Image 1. IHC image of ABIN7146077 diluted at 1:600 and staining in paraffin-embedded human kidney tissue performed on a Leica Bond™ system. After dewaxing and hydration, antigen retrieval was mediated by high pressure in a citrate buffer (pH 6.0). Section was blocked with 10% normal goat serum 30min at RT. Then primary antibody (1% BSA) was incubated at 4°C overnight. The primary is detected by a biotinylated secondary antibody and visualized using an HRP conjugated SP system.



Immunohistochemistry

Image 2. IHC image of ABIN7146077 diluted at 1:600 and staining in paraffin-embedded human testis tissue performed on a Leica Bond™ system. After dewaxing and hydration, antigen retrieval was mediated by high pressure in a citrate buffer (pH 6.0). Section was blocked with 10% normal goat serum 30min at RT. Then primary antibody (1% BSA) was incubated at 4°C overnight. The primary is detected by a biotinylated secondary antibody and visualized using an HRP conjugated SP system.



Immunofluorescence

Image 3. Immunofluorescence staining of U251 cells with ABIN7146077 at 1:250, counter-stained with DAPI. The cells were fixed in 4% formaldehyde, permeabilized using 0.2% Triton X-100 and blocked in 10% normal Goat Serum. The cells were then incubated with the antibody overnight at 4°C. The secondary antibody was Alexa Fluor 488-conjugated AffiniPure Goat Anti-Rabbit IgG(H+L).