

Datasheet for ABIN7146093
anti-CLEC7A antibody (AA 1-44)[Go to Product page](#)

2 Images

Overview

Quantity:	100 µg
Target:	CLEC7A
Binding Specificity:	AA 1-44
Reactivity:	Human
Host:	Rabbit
Clonality:	Polyclonal
Conjugate:	This CLEC7A antibody is un-conjugated
Application:	ELISA, Immunohistochemistry (IHC), Immunofluorescence (IF)

Product Details

Immunogen:	Recombinant Human C-type lectin domain family 7 member A protein (1-44AA)
Isotype:	IgG
Cross-Reactivity:	Human
Purification:	>95%, Protein G purified

Target Details

Target:	CLEC7A
Alternative Name:	CLEC7A (CLEC7A Products)
Background:	Background: Lectin that functions as pattern receptor specific for beta-1,3-linked and beta-1,6-linked glucans, such as cell wall constituents from pathogenic bacteria and fungi. Necessary for

Target Details

the TLR2-mediated inflammatory response and for TLR2-mediated activation of NF-kappa-B. Enhances cytokine production in macrophages and dendritic cells. Mediates production of reactive oxygen species in the cell. Mediates phagocytosis of C.albicans conidia. Binds T-cells in a way that does not involve their surface glycans and plays a role in T-cell activation.

Stimulates T-cell proliferation (By similarity).

Aliases: Beta GR antibody, Beta-glucan receptor antibody, BGR antibody, C type calcium dependent carbohydrate recognition domain lectin superfamily member 12 antibody, C type lectin domain family 7 member a antibody, C-type lectin domain family 7 member A antibody, C-type lectin superfamily member 12 antibody, CANDF4 antibody, CLC7A_HUMAN antibody, CLEC7A antibody, CLEC7A protein antibody, Clecsf12 antibody, DC-associated C-type lectin 1 antibody, Dectin 1 antibody, DECTIN 1 receptor antibody, Dectin-1 antibody, Dectin1 antibody, Dendritic cell associated C type lectin 1 antibody, Dendritic cell-associated C-type lectin 1 antibody, Lectin like receptor 1 antibody, Putative transmembrane protein dectin 1 antibody

UniProt: [Q9BXN2](#)

Pathways: [Activation of Innate immune Response](#)

Application Details

Application Notes: Recommended dilution: IHC:1:20-1:200, IF:1:50-1:200,

Restrictions: For Research Use only

Handling

Format: Liquid

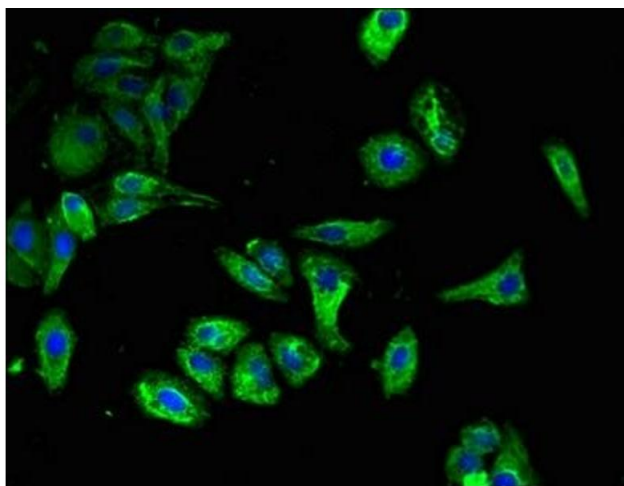
Buffer: Preservative: 0.03 % Proclin 300
Constituents: 50 % Glycerol, 0.01M PBS, pH 7.4

Preservative: ProClin

Precaution of Use: This product contains ProClin: a POISONOUS AND HAZARDOUS SUBSTANCE which should be handled by trained staff only.

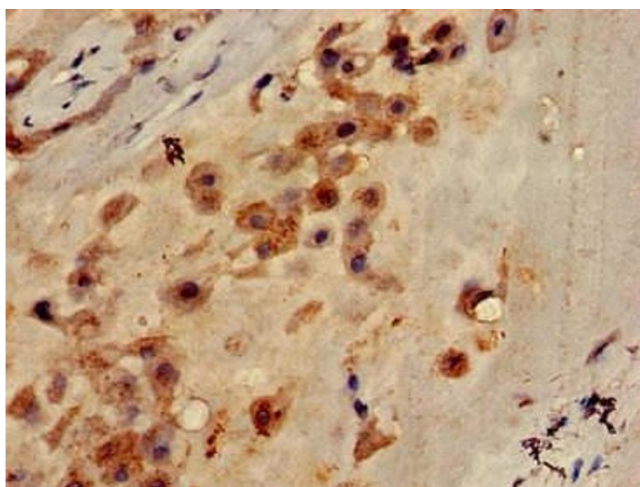
Storage: -20 °C,-80 °C

Storage Comment: Upon receipt, store at -20°C or -80°C. Avoid repeated freeze.



Immunofluorescence

Image 1. Immunofluorescent analysis of HepG2 cells using ABIN7146093 at dilution of 1:100 and Alexa Fluor 488-conjugated AffiniPure Goat Anti-Rabbit IgG(H+L)



Immunohistochemistry

Image 2. Immunohistochemistry of paraffin-embedded human placenta tissue using ABIN7146093 at dilution of 1:100