



[Go to Product page](#)

Datasheet for ABIN7146141  
**anti-CXCL6 antibody (AA 38-114)**

2 Images

Overview

Quantity:	100 µg
Target:	CXCL6
Binding Specificity:	AA 38-114
Reactivity:	Human
Host:	Rabbit
Clonality:	Polyclonal
Conjugate:	This CXCL6 antibody is un-conjugated
Application:	ELISA, Immunohistochemistry (IHC)

Product Details

Immunogen:	Recombinant Human C-X-C motif chemokine 6 protein (38-114AA)
Isotype:	IgG
Cross-Reactivity:	Human
Purification:	>95%, Protein G purified

Target Details

Target:	CXCL6
Alternative Name:	CXCL6 ( <a href="#">CXCL6 Products</a> )
Background:	Background: Chemotactic for neutrophil granulocytes. Signals through binding and activation of its receptors (CXCR1 and CXCR2). In addition to its chemotactic and angiogenic properties, it

## Target Details

---

has strong antibacterial activity against Gram-positive and Gram-negative bacteria (90-fold-higher when compared to CXCL5 and CXCL7).

Aliases: C X C motif chemokine 6 antibody, Chemokine (C X C motif) ligand 6 antibody, Chemokine alpha 3 antibody, CKA 3 antibody, CKA-3 antibody, CKA3 antibody, CXCL 6 antibody, CXCL6 antibody, CXCL6\_HUMAN antibody, GCP 2 antibody, GCP-2 antibody, Granulocyte chemotactic protein 2 antibody, N-processed variant 3 antibody, SCYB6 antibody, Small inducible cytokine B6 antibody, Small inducible cytokine subfamily B (Cys X Cys) member 6 antibody, Small inducible cytokine subfamily B (Cys X Cys) member b antibody, Small-inducible cytokine B6 antibody

---

UniProt: [P80162](#)

## Application Details

---

Application Notes: Recommended dilution: IHC:1:20-1:200,

Restrictions: For Research Use only

## Handling

---

Format: Liquid

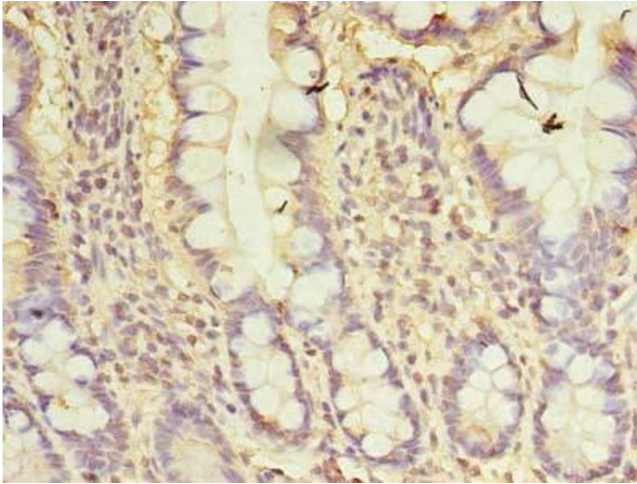
Buffer: Preservative: 0.03 % Proclin 300  
Constituents: 50 % Glycerol, 0.01M PBS, PH 7.4

Preservative: ProClin

Precaution of Use: This product contains ProClin: a POISONOUS AND HAZARDOUS SUBSTANCE which should be handled by trained staff only.

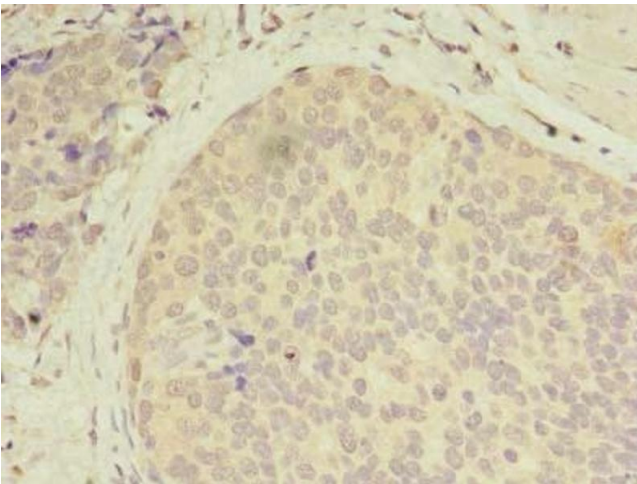
Storage: -20 °C,-80 °C

Storage Comment: Upon receipt, store at -20°C or -80°C. Avoid repeated freeze.



#### Immunohistochemistry

**Image 1.** Immunohistochemistry of paraffin-embedded human small intestine tissue using ABIN7146141 at dilution of 1:100



#### Immunohistochemistry

**Image 2.** Immunohistochemistry of paraffin-embedded human gastric cancer using ABIN7146141 at dilution of 1:100