



[Go to Product page](#)

Datasheet for ABIN7146149

anti-C1GALT1C1 antibody (AA 27-318)

1 Image

Overview

Quantity:	100 µL
Target:	C1GALT1C1
Binding Specificity:	AA 27-318
Reactivity:	Human
Host:	Rabbit
Clonality:	Polyclonal
Conjugate:	This C1GALT1C1 antibody is un-conjugated
Application:	ELISA, Immunofluorescence (IF)

Product Details

Immunogen:	Recombinant Human C1GALT1-specific chaperone 1 protein (27-318aa)
Isotype:	IgG
Cross-Reactivity:	Human
Purification:	>95%, Protein G purified

Target Details

Target:	C1GALT1C1
Alternative Name:	C1GALT1C1 (C1GALT1C1 Products)
Background:	Background: Probable chaperone required for the generation of 1 O-glycan Gal-beta1-3GalNAc-alpha1-Ser/Thr (T antigen), which is a precursor for many extended O-glycans in glycoproteins.

Target Details

Probably acts as a specific molecular chaperone assisting the folding/stability of core 1 beta-3-galactosyltransferase (C1GALT1).

Aliases: C1GALT1-specific chaperone 1 (C38H2-like protein 1) (C38H2-L1) (Core 1 beta1,3-galactosyltransferase 2) (C1Gal-T2) (C1GalT2) (Core 1 beta3-Gal-T2) (Core 1 beta3-galactosyltransferase-specific molecular chaperone), C1GALT1C1, COSMC

UniProt: [Q96EU7](#)

Application Details

Application Notes: Recommended dilution: IF:1:100-1:500,

Restrictions: For Research Use only

Handling

Format: Liquid

Buffer: Preservative: 0.03 % Proclin 300
Constituents: 50 % Glycerol, 0.01M PBS, pH 7.4

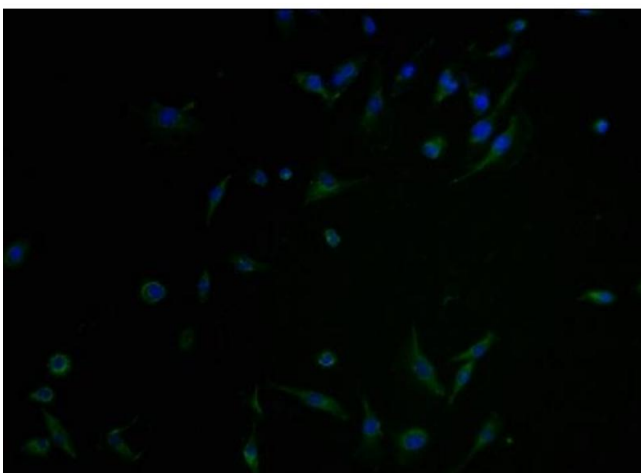
Preservative: ProClin

Precaution of Use: This product contains ProClin: a POISONOUS AND HAZARDOUS SUBSTANCE which should be handled by trained staff only.

Storage: -20 °C,-80 °C

Storage Comment: Upon receipt, store at -20°C or -80°C. Avoid repeated freeze.

Images



Immunofluorescence

Image 1. Immunofluorescence staining of U251 cells with ABIN7146149 at 1:100, counter-stained with DAPI. The cells were blocked in 10 % normal Goat Serum and incubated with the antibody overnight at 4 °C. The secondary antibody was Alexa Fluor 488-conjugated AffiniPure Goat Anti-Rabbit IgG(H+L).