



[Go to Product page](#)

Datasheet for ABIN7146182

## anti-RCE1/FACE2 antibody (AA 133-185)

### 1 Image

#### Overview

Quantity:	100 µg
Target:	RCE1/FACE2 (RCE1)
Binding Specificity:	AA 133-185
Reactivity:	Human
Host:	Rabbit
Clonality:	Polyclonal
Conjugate:	This RCE1/FACE2 antibody is un-conjugated
Application:	ELISA, Western Blotting (WB)

#### Product Details

Immunogen:	Recombinant Human CAAX prenyl protease 2 protein (133-185AA)
Isotype:	IgG
Cross-Reactivity:	Human
Purification:	>95%, Protein G purified

#### Target Details

Target:	RCE1/FACE2 (RCE1)
Alternative Name:	RCE1 ( <a href="#">RCE1 Products</a> )
Background:	Background: Proteolytically removes the C-terminal three residues of farnesylated and geranylated proteins. Seems to be able to process K-Ras, N-Ras, H-Ras, RAP1B and G-gamma-

## Target Details

1 (PubMed:10085068).

Aliases: RCE1 antibody, FACE2 antibody, RCE1A antibody, RCE1BCAAX prenyl protease 2 antibody, EC 3.4.22.- antibody, Farnesylated proteins-converting enzyme 2 antibody, FACE-2 antibody, Prenyl protein-specific endoprotease 2 antibody, RCE1 homolog antibody, hRCE1 antibody

UniProt: [Q9Y256](#)

## Application Details

Application Notes: Recommended dilution: WB:1:500-1:5000,

Restrictions: For Research Use only

## Handling

Format: Liquid

Buffer: Preservative: 0.03 % Proclin 300  
Constituents: 50 % Glycerol, 0.01M PBS, pH 7.4

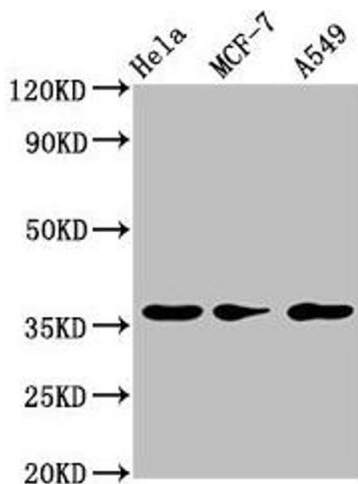
Preservative: ProClin

Precaution of Use: This product contains ProClin: a POISONOUS AND HAZARDOUS SUBSTANCE which should be handled by trained staff only.

Storage: -20 °C,-80 °C

Storage Comment: Upon receipt, store at -20°C or -80°C. Avoid repeated freeze.

## Images



### Western Blotting

**Image 1.** Western Blot Positive WB detected in: HeLa whole cell lysate, MCF-7 whole cell lysate, A549 whole cell lysate  
All lanes: RCE1 antibody at 3.2 µg/mL Secondary Goat polyclonal to rabbit IgG at 1/50000 dilution Predicted band size: 36 kDa Observed band size: 36 kDa