

Datasheet for ABIN7146194
anti-E-cadherin antibody (AA 155-707)[Go to Product page](#)

5 Images

Overview

Quantity:	100 µL
Target:	E-cadherin (CDH1)
Binding Specificity:	AA 155-707
Reactivity:	Human
Host:	Mouse
Clonality:	Monoclonal
Conjugate:	This E-cadherin antibody is un-conjugated
Application:	Western Blotting (WB), Flow Cytometry (FACS), ELISA, Immunofluorescence (IF)

Product Details

Immunogen:	Recombinant Human Cadherin-1 protein (155-707AA)
Clone:	9H2D3
Isotype:	IgG1, IgG1 kappa
Cross-Reactivity:	Human, Mouse
Purification:	Protein G purified

Target Details

Target:	E-cadherin (CDH1)
Alternative Name:	CDH1 (CDH1 Products)
Background:	Background: Cadherins are calcium-dependent cell adhesion proteins (PubMed:11976333).

Target Details

They preferentially interact with themselves in a homophilic manner in connecting cells, cadherins may thus contribute to the sorting of heterogeneous cell types. CDH1 is involved in mechanisms regulating cell-cell adhesions, mobility and proliferation of epithelial cells (PubMed:11976333). Has a potent invasive suppressor role. It is a ligand for integrin alpha-E/beta-7.

Aliases: Cadherin-1 (CAM 120/80) (Epithelial cadherin) (E-cadherin) (Uvomorulin) (CD antigen CD324) [Cleaved into: E-Cad/CTF1, E-Cad/CTF2, E-Cad/CTF3], CDH1, CDHE UVO

UniProt: [P12830](#)

Pathways: [WNT Signaling](#), [Sensory Perception of Sound](#), [Cell-Cell Junction Organization](#), [Tube Formation](#)

Application Details

Application Notes: Recommended dilution: WB:1:500-1:5000, IF:1:50-1:200,

Restrictions: For Research Use only

Handling

Format: Liquid

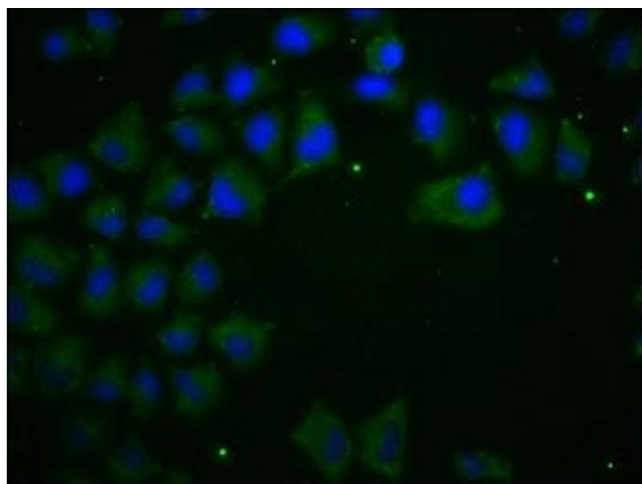
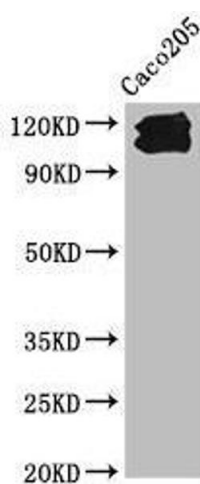
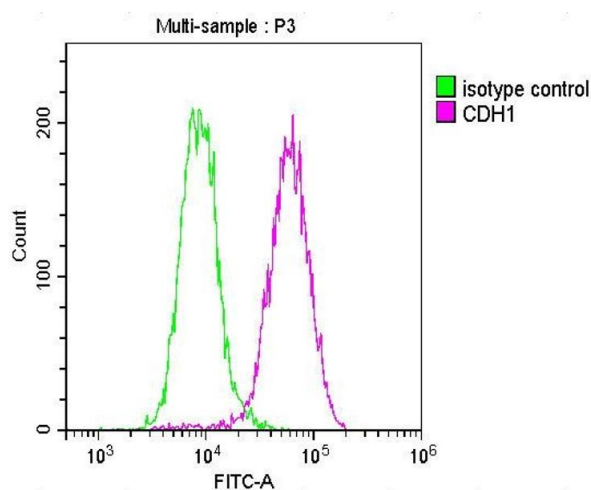
Buffer: Preservative: 0.03 % Proclin 300
Constituents: 50 % Glycerol, 0.01M PBS, PH 7.4

Preservative: ProClin

Precaution of Use: This product contains ProClin: a POISONOUS AND HAZARDOUS SUBSTANCE which should be handled by trained staff only.

Storage: -20 °C,-80 °C

Storage Comment: Upon receipt, store at -20°C or -80°C. Avoid repeated freeze.



Flow Cytometry

Image 1. Overlay histogram showing MCF-7 cells stained with ABIN7146194 (red line) at 1:100. The cells were incubated in 1x PBS /10 % normal goat serum to block non-specific protein-protein interactions followed by primary antibody for 1 h at 4 °C. The secondary antibody used was FITC goat anti-mouse IgG(H+L) at 1/200 dilution for 1 h at 4 °C. Isotype control antibody (green line) was used under the same conditions. Acquisition of >10,000 events was performed.

Western Blotting

Image 2. Western Blot Positive WB detected in: Caco205 whole cell lysate All lanes: CDH1 antibody at 1:1000 Secondary Goat polyclonal to Mouse IgG at 1/10000 dilution Predicted band size: 98, 91 kDa Observed band size: 110, 120 kDa

Immunofluorescence

Image 3. Immunofluorescence staining of HeLa cells with ABIN7146194 at 1:100, counter-stained with DAPI. The cells were blocked in 10 % normal Goat Serum and then incubated with the primary antibody overnight at 4 °C. The secondary antibody was Alexa Fluor 488-conjugated AffiniPure Goat Anti-Mouse IgG(H+L).

Please check the [product details page](#) for more images. Overall 5 images are available for ABIN7146194.