

Datasheet for ABIN7146195
anti-E-cadherin antibody (AA 23-621)



[Go to Product page](#)

4 Images

Overview

| | |
|----------------------|---|
| Quantity: | 100 µg |
| Target: | E-cadherin (CDH1) |
| Binding Specificity: | AA 23-621 |
| Reactivity: | Human |
| Host: | Rabbit |
| Clonality: | Polyclonal |
| Conjugate: | This E-cadherin antibody is un-conjugated |
| Application: | Western Blotting (WB), Immunohistochemistry (IHC), ELISA, Immunofluorescence (IF), Immunoprecipitation (IP) |

Product Details

| | |
|-------------------|---|
| Immunogen: | Recombinant Human Cadherin-1 protein (23-621AA) |
| Isotype: | IgG |
| Cross-Reactivity: | Human |
| Purification: | >95%, Protein G purified |

Target Details

| | |
|-------------------|---|
| Target: | E-cadherin (CDH1) |
| Alternative Name: | CDH1 (CDH1 Products) |
| Background: | Background: Cadherins are calcium-dependent cell adhesion proteins (PubMed:11976333). |

Target Details

They preferentially interact with themselves in a homophilic manner in connecting cells, cadherins may thus contribute to the sorting of heterogeneous cell types. CDH1 is involved in mechanisms regulating cell-cell adhesions, mobility and proliferation of epithelial cells (PubMed:11976333). Has a potent invasive suppressor role. It is a ligand for integrin alpha-E/beta-7.

Aliases: Arc 1 antibody, CADH1_HUMAN antibody, Cadherin 1 antibody, cadherin 1 type 1 E-cadherin antibody, Cadherin-1 antibody, Cadherin1 antibody, CAM 120/80 antibody, CD 324 antibody, CD324 antibody, CD324 antigen antibody, cdh1 antibody, CDHE antibody, E-Cad/CTF3 antibody, E-cadherin antibody, ECAD antibody, Epithelial cadherin antibody, epithelial calcium dependant adhesion protein antibody, LCAM antibody, Liver cell adhesion molecule antibody, UVO antibody, Uvomorulin antibody

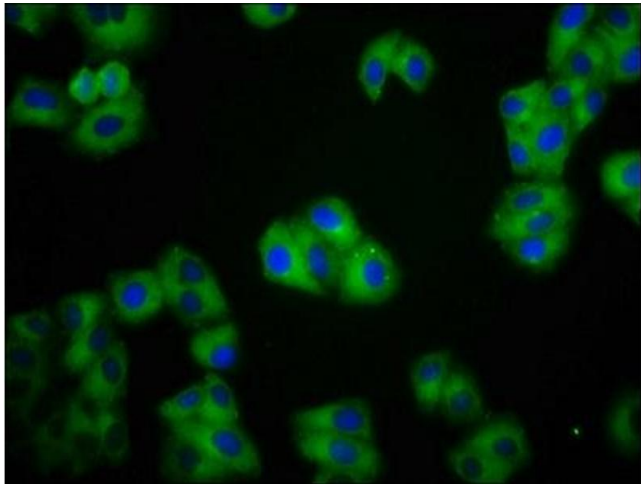
| | |
|-----------|--|
| UniProt: | P12830 |
| Pathways: | WNT Signaling , Sensory Perception of Sound , Cell-Cell Junction Organization , Tube Formation |

Application Details

| | |
|--------------------|---|
| Application Notes: | Recommended dilution: WB:1:500-1:5000, IHC:1:200-1:500, IF:1:50-1:200, IP:1:200-1:2000, |
| Restrictions: | For Research Use only |

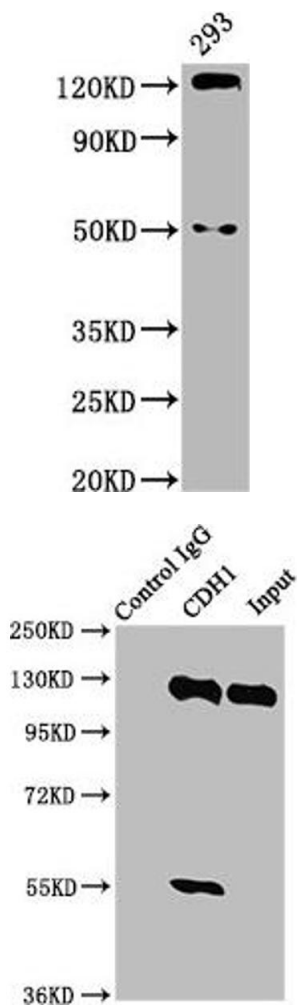
Handling

| | |
|--------------------|---|
| Format: | Liquid |
| Buffer: | Preservative: 0.03 % Proclin 300 Constituents: 50 % Glycerol, 0.01M PBS, pH 7.4 |
| Preservative: | ProClin |
| Precaution of Use: | This product contains ProClin: a POISONOUS AND HAZARDOUS SUBSTANCE which should be handled by trained staff only. |
| Storage: | -20 °C,-80 °C |
| Storage Comment: | Upon receipt, store at -20°C or -80°C. Avoid repeated freeze. |



Immunofluorescence

Image 1. Immunofluorescence staining of HepG2 cells with ABIN7146195 at 1:100, counter-stained with DAPI. The cells were fixed in 4% formaldehyde, permeabilized using 0.2% Triton X-100 and blocked in 10% normal Goat Serum. The cells were then incubated with the antibody overnight at 4°C. The secondary antibody was Alexa Fluor 488-conjugated AffiniPure Goat Anti-Rabbit IgG(H+L).



Western Blotting

Image 2. Western Blot Positive WB detected in: 293 whole cell lysate All lanes: CDH1 antibody at 2.9 µg/mL Secondary Goat polyclonal to rabbit IgG at 1/50000 dilution Predicted band size: 98, 91 kDa Observed band size: 125 kDa

Western Blotting

Image 3. Immunoprecipitating CDH1 in HEK293 whole cell lysate Lane 1: Rabbit control IgG instead of ABIN7146195 in HEK293 whole cell lysate. For western blotting, a HRP-conjugated Protein G antibody was used as the secondary antibody (1/2000) Lane 2: ABIN7146195 (6 µg) + HEK293 whole cell lysate (500 µg) Lane 3: HEK293 whole cell lysate (20 µg)

Please check the [product details page](#) for more images. Overall 4 images are available for ABIN7146195.