



[Go to Product page](#)

Datasheet for ABIN7146201

## anti-OB Cadherin antibody (AA 637-796)

### 4 Images

#### Overview

Quantity:	100 µL
Target:	OB Cadherin (CDH11)
Binding Specificity:	AA 637-796
Reactivity:	Human
Host:	Rabbit
Clonality:	Polyclonal
Conjugate:	This OB Cadherin antibody is un-conjugated
Application:	Western Blotting (WB), ELISA, Immunohistochemistry (IHC), Immunoprecipitation (IP)

#### Product Details

Immunogen:	Recombinant Human Cadherin-11 protein (637-796AA)
Isotype:	IgG
Cross-Reactivity:	Human
Purification:	Antigen Affinity Purified

#### Target Details

Target:	OB Cadherin (CDH11)
Alternative Name:	CDH11 ( <a href="#">CDH11 Products</a> )
Background:	Background: Cadherins are calcium-dependent cell adhesion proteins. They preferentially interact with themselves in a homophilic manner in connecting cells, cadherins may thus

## Target Details

contribute to the sorting of heterogeneous cell types.

Aliases: CAD11 antibody, CAD11\_HUMAN antibody, Cadherin 11 antibody, Cadherin 11 type 2 antibody, Cadherin 11 type 2 OB cadherin (osteoblast) antibody, Cadherin-11 antibody, Cdh11 antibody, CDHOB antibody, OB antibody, OB-cadherin antibody, OBcadherin antibody, OSF-4 antibody, OSF4 antibody, Osteoblast cadherin antibody

UniProt: [P55287](#)

## Application Details

Application Notes: Recommended dilution: WB:1:500-1:2000, IHC:1:20-1:200, IP:1:200-1:2000,

Restrictions: For Research Use only

## Handling

Format: Liquid

Buffer: PBS with 0.02 % sodium azide, 50 % glycerol, pH 7.3.

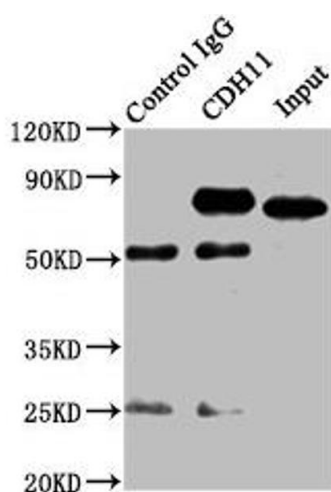
Preservative: Sodium azide

Precaution of Use: This product contains Sodium azide: a POISONOUS AND HAZARDOUS SUBSTANCE which should be handled by trained staff only.

Storage: -20 °C,-80 °C

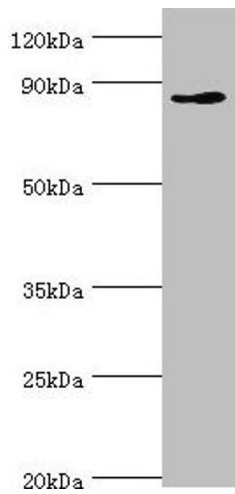
Storage Comment: Upon receipt, store at -20°C or -80°C. Avoid repeated freeze.

## Images



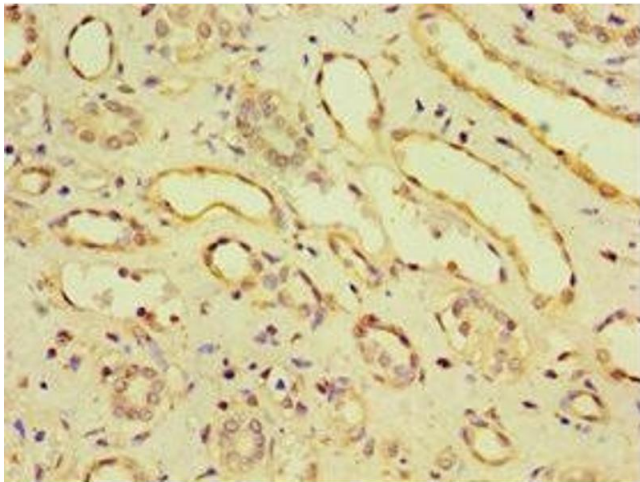
### Western Blotting

**Image 1.** Immunoprecipitating CDH11 in SH-SY5Y whole cell lysate Lane 1: Rabbit control IgG instead of ABIN7146201 in SH-SY5Y whole cell lysate. For western blotting, a HRP-conjugated Protein G antibody was used as the secondary antibody (1/5000) Lane 2: ABIN7146201 (8 µg) + SH-SY5Y whole cell lysate (500 µg) Lane 3: SH-SY5Y whole cell lysate (20 µg)



### Western Blotting

**Image 2.** Western blot All lanes: CDH11 antibody at 6 µg/mL + Jurkat whole cell lysate Secondary Goat polyclonal to rabbit IgG at 1/10000 dilution Predicted band size: 88, 77 kDa Observed band size: 88 kDa



### Immunohistochemistry

**Image 3.** Immunohistochemistry of paraffin-embedded human kidney tissue using ABIN7146201 at dilution of 1:100

Please check the [product details page](#) for more images. Overall 4 images are available for ABIN7146201.