

Datasheet for ABIN7146213
anti-CDH15 antibody (AA 639-766)[Go to Product page](#)

2 Images

Overview

Quantity:	100 µg
Target:	CDH15
Binding Specificity:	AA 639-766
Reactivity:	Human
Host:	Rabbit
Clonality:	Polyclonal
Conjugate:	This CDH15 antibody is un-conjugated
Application:	Western Blotting (WB), ELISA, Immunofluorescence (IF)

Product Details

Immunogen:	Recombinant Human Cadherin-15 protein (639-766AA)
Isotype:	IgG
Cross-Reactivity:	Human, Rat
Purification:	>95%, Protein G purified

Target Details

Target:	CDH15
Alternative Name:	CDH15 (CDH15 Products)
Background:	Background: Cadherins are calcium-dependent cell adhesion proteins. They preferentially interact with themselves in a homophilic manner in connecting cells, cadherins may thus

Target Details

contribute to the sorting of heterogeneous cell types. M-cadherin is part of the myogenic program and may provide a trigger for terminal muscle differentiation.

Aliases: CAD15_HUMAN antibody, Cadherin 14 antibody, Cadherin 15 antibody, Cadherin 15, type 1, M cadherin (myotubule) antibody, Cadherin 3 antibody, Cadherin-14 antibody, Cadherin-15 antibody, Cadherin14 antibody, Cadherin15 antibody, Cadherin3 antibody, CCAD antibody, CDH 14 antibody, CDH 15 antibody, CDH 3 antibody, CDH14 antibody, Cdh15 antibody, CDH3 antibody, CDHM antibody, M-cadherin antibody, MCAD antibody, MRD3 antibody, Muscle cadherin antibody, Myotubule cadherin antibody

UniProt: [P55291](#)

Application Details

Application Notes: Recommended dilution: WB:1:500-1:5000, IF:1:50-1:200,

Restrictions: For Research Use only

Handling

Format: Liquid

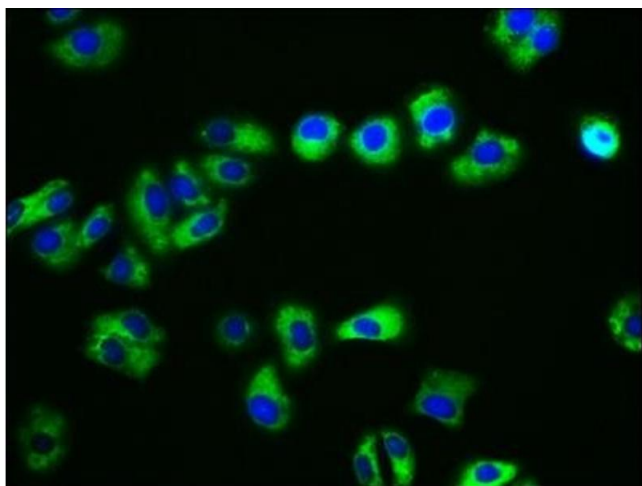
Buffer: Preservative: 0.03 % Proclin 300
Constituents: 50 % Glycerol, 0.01M PBS, pH 7.4

Preservative: ProClin

Precaution of Use: This product contains ProClin: a POISONOUS AND HAZARDOUS SUBSTANCE which should be handled by trained staff only.

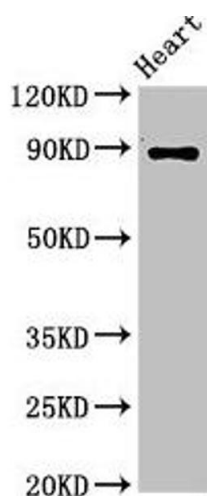
Storage: -20 °C,-80 °C

Storage Comment: Upon receipt, store at -20°C or -80°C. Avoid repeated freeze.



Immunofluorescence

Image 1. Immunofluorescence staining of HepG2 cells with ABIN7146213 at 1:133, counter-stained with DAPI. The cells were fixed in 4 % formaldehyde, permeabilized using 0.2 % Triton X-100 and blocked in 10 % normal Goat Serum. The cells were then incubated with the antibody overnight at 4 °C. The secondary antibody was Alexa Fluor 488-conjugated AffiniPure Goat Anti-Rabbit IgG(H+L).



Western Blotting

Image 2. Western Blot Positive WB detected in: Rat heart tissue All lanes: CDH15 antibody at 3.2 µg/mL Secondary Goat polyclonal to rabbit IgG at 1/50000 dilution Predicted band size: 89 kDa Observed band size: 89 kDa