

Datasheet for ABIN7146237
anti-Cadherin 7 antibody (AA 146-296)

3 Images

[Go to Product page](#)

Overview

Quantity:	100 µg
Target:	Cadherin 7 (CDH7)
Binding Specificity:	AA 146-296
Reactivity:	Human
Host:	Rabbit
Clonality:	Polyclonal
Conjugate:	This Cadherin 7 antibody is un-conjugated
Application:	Western Blotting (WB), ELISA, Immunohistochemistry (IHC), Immunofluorescence (IF)

Product Details

Immunogen:	Recombinant Human Cadherin-7 protein (146-296AA)
Isotype:	IgG
Cross-Reactivity:	Human
Purification:	>95%, Protein G purified

Target Details

Target:	Cadherin 7 (CDH7)
Alternative Name:	CDH7 (CDH7 Products)
Background:	Background: Cadherins are calcium-dependent cell adhesion proteins. They preferentially interact with themselves in a homophilic manner in connecting cells, cadherins may thus

Target Details

contribute to the sorting of heterogeneous cell types.

Aliases: CDH7 antibody, CDH7L1Cadherin-7 antibody

UniProt: [Q9ULB5](#)

Pathways: [Cell-Cell Junction Organization](#)

Application Details

Application Notes: Recommended dilution: WB:1:500-1:5000, IHC:1:200-1:500, IF:1:50-1:200,

Restrictions: For Research Use only

Handling

Format: Liquid

Buffer: Preservative: 0.03 % Proclin 300
Constituents: 50 % Glycerol, 0.01M PBS, pH 7.4

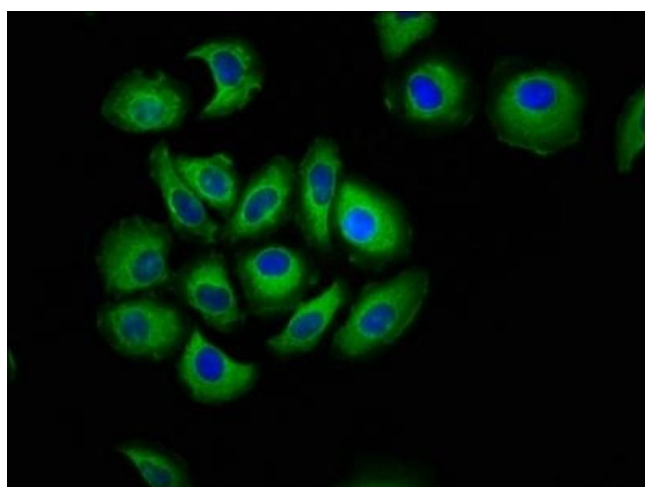
Preservative: ProClin

Precaution of Use: This product contains ProClin: a POISONOUS AND HAZARDOUS SUBSTANCE which should be handled by trained staff only.

Storage: -20 °C,-80 °C

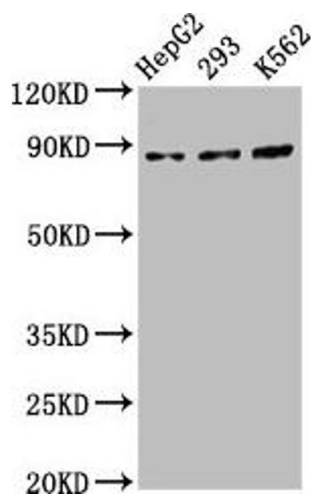
Storage Comment: Upon receipt, store at -20°C or -80°C. Avoid repeated freeze.

Images



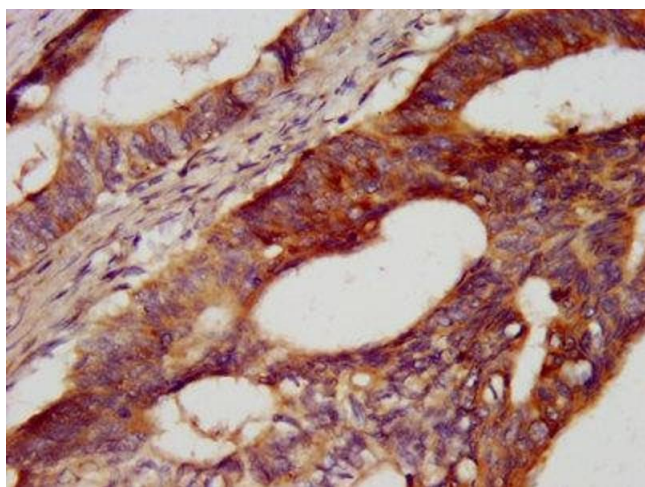
Immunofluorescence

Image 1. Immunofluorescence staining of A549 cells with ABIN7146237 at 1:133, counter-stained with DAPI. The cells were fixed in 4% formaldehyde, permeabilized using 0.2% Triton X-100 and blocked in 10% normal Goat Serum. The cells were then incubated with the antibody overnight at 4°C. The secondary antibody was Alexa Fluor 488-conjugated AffiniPure Goat Anti-Rabbit IgG(H+L).



Western Blotting

Image 2. Western Blot Positive WB detected in: HepG2 whole cell lysate, 293 whole cell lysate, K562 whole cell lysate. All lanes: CDH7 antibody at 5.5 µg/mL. Secondary Goat polyclonal to rabbit IgG at 1/50000 dilution. Predicted band size: 88 kDa. Observed band size: 88 kDa.



Immunohistochemistry

Image 3. IHC image of ABIN7146237 diluted at 1:400 and staining in paraffin-embedded human colon cancer performed on a Leica Bond™ system. After dewaxing and hydration, antigen retrieval was mediated by high pressure in a citrate buffer (pH 6.0). Section was blocked with 10% normal goat serum 30min at RT. Then primary antibody (1% BSA) was incubated at 4°C overnight. The primary is detected by a biotinylated secondary antibody and visualized using an HRP conjugated SP system.