



[Go to Product page](#)

Datasheet for ABIN7146249  
**anti-CPED1 antibody (AA 221-472)**

1 Image

### Overview

Quantity:	100 µg
Target:	CPED1
Binding Specificity:	AA 221-472
Reactivity:	Human
Host:	Rabbit
Clonality:	Polyclonal
Conjugate:	This CPED1 antibody is un-conjugated
Application:	ELISA, Immunohistochemistry (IHC)

### Product Details

Immunogen:	Recombinant Human Cadherin-like and PC-esterase domain-containing protein 1 protein (221-472AA)
Isotype:	IgG
Cross-Reactivity:	Human
Purification:	>95%, Protein G purified

### Target Details

Target:	CPED1
Alternative Name:	CPED1 ( <a href="#">CPED1 Products</a> )
Background:	Background: endoplasmic reticulum

## Target Details

Aliases: CPED1 antibody, C7orf58 antibody, UNQ9432/PRO34713Cadherin-like and PC-esterase domain-containing protein 1 antibody

UniProt: [A4D0V7](#)

## Application Details

Application Notes: Recommended dilution: IHC:1:20-1:200,

Restrictions: For Research Use only

## Handling

Format: Liquid

Buffer: Preservative: 0.03 % Proclin 300  
Constituents: 50 % Glycerol, 0.01M PBS, PH 7.4

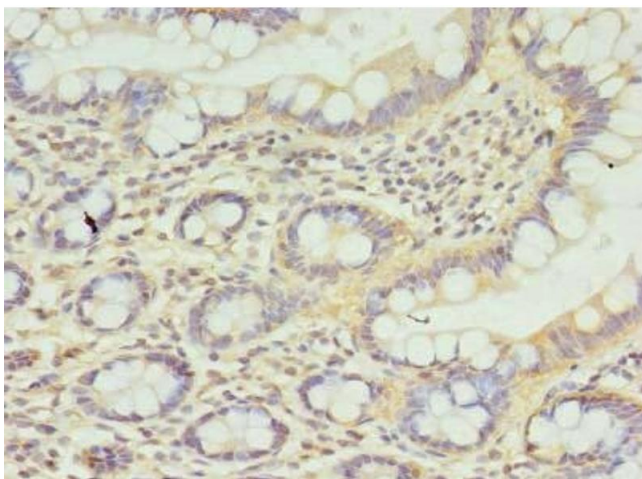
Preservative: ProClin

Precaution of Use: This product contains ProClin: a POISONOUS AND HAZARDOUS SUBSTANCE which should be handled by trained staff only.

Storage: -20 °C,-80 °C

Storage Comment: Upon receipt, store at -20°C or -80°C. Avoid repeated freeze.

## Images



### Immunohistochemistry

**Image 1.** Immunohistochemistry of paraffin-embedded human small intestine tissue using ABIN7146249 at dilution of 1:100