

Datasheet for ABIN7146257
anti-CALB1 antibody (AA 2-261)



[Go to Product page](#)

2 Images

Overview

Quantity:	100 µL
Target:	CALB1
Binding Specificity:	AA 2-261
Reactivity:	Human
Host:	Rabbit
Clonality:	Polyclonal
Conjugate:	This CALB1 antibody is un-conjugated
Application:	Immunohistochemistry (IHC), ELISA, Immunofluorescence (IF)

Product Details

Immunogen:	Recombinant Human Calbindin protein (2-261AA)
Isotype:	IgG
Cross-Reactivity:	Human
Purification:	>95%, Protein G purified

Target Details

Target:	CALB1
Alternative Name:	CALB1 (CALB1 Products)
Background:	Background: Buffers cytosolic calcium. May stimulate a membrane Ca(2+)-ATPase and a 3',5'-cyclic nucleotide phosphodiesterase.

Target Details

Aliases: avian-type antibody, CAB27 antibody, CALB 1 antibody, CALB antibody, CALB1 antibody, CALB1_HUMAN antibody, Calbindin 1 28 kDa antibody, Calbindin antibody, Calbindin D28 antibody, D 28K antibody, D-28K antibody, D28K antibody, OTTHUMP00000166027 antibody, OTTHUMP00000225441 antibody, RTVL H protein antibody, Vitamin D dependent calcium binding protein antibody, Vitamin D dependent calcium binding protein avian type antibody, Vitamin D-dependent calcium-binding protein antibody

UniProt: [P05937](#)

Application Details

Application Notes: Recommended dilution: IHC:1:1000-1:2000, IF:1:200-1:500,

Restrictions: For Research Use only

Handling

Format: Liquid

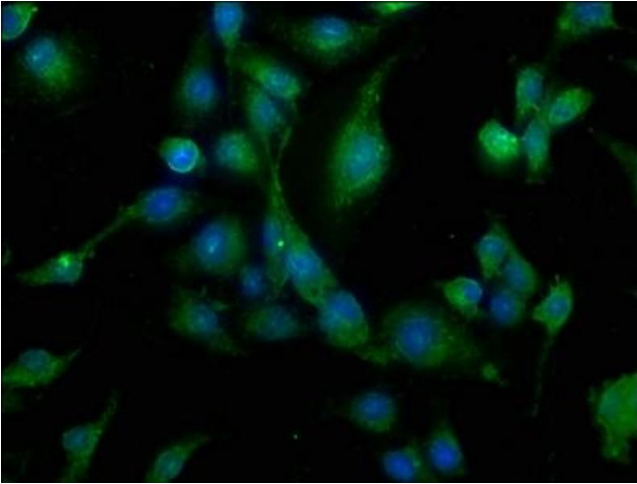
Buffer: Preservative: 0.03 % Proclin 300
Constituents: 50 % Glycerol, 0.01M PBS, pH 7.4

Preservative: ProClin

Precaution of Use: This product contains ProClin: a POISONOUS AND HAZARDOUS SUBSTANCE which should be handled by trained staff only.

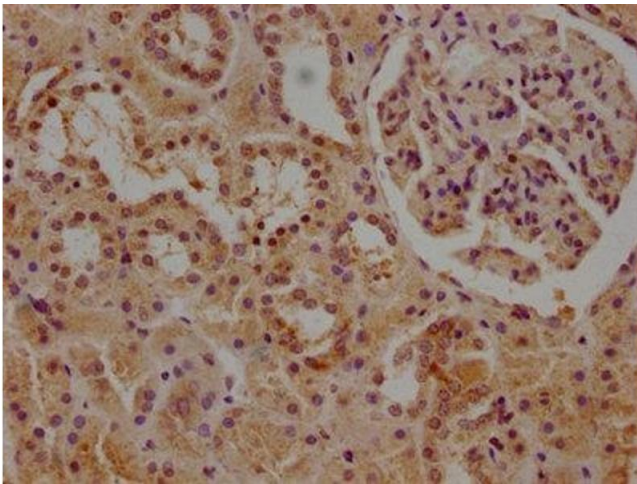
Storage: -20 °C,-80 °C

Storage Comment: Upon receipt, store at -20°C or -80°C. Avoid repeated freeze.



Immunofluorescence

Image 1. Immunofluorescence staining of U251 cells with ABIN7146257 at 1:200, counter-stained with DAPI. The cells were fixed in 4 % formaldehyde, permeabilized using 0.2 % Triton X-100 and blocked in 10 % normal Goat Serum. The cells were then incubated with the antibody overnight at 4 °C. The secondary antibody was Alexa Fluor 488-conjugated AffiniPure Goat Anti-Rabbit IgG(H+L).



Immunohistochemistry

Image 2. IHC image of ABIN7146257 diluted at 1:1000 and staining in paraffin-embedded human kidney tissue performed on a Leica Bond™ system. After dewaxing and hydration, antigen retrieval was mediated by high pressure in a citrate buffer (pH 6.0). Section was blocked with 10 % normal goat serum 30 min at RT. Then primary antibody (1 % BSA) was incubated at 4 °C overnight. The primary is detected by a biotinylated secondary antibody and visualized using an HRP conjugated SP system.