

Datasheet for ABIN7146261
anti-CHP antibody (AA 2-195)



[Go to Product page](#)

3 Images

Overview

Quantity:	100 µg
Target:	CHP
Binding Specificity:	AA 2-195
Reactivity:	Human
Host:	Rabbit
Clonality:	Polyclonal
Conjugate:	This CHP antibody is un-conjugated
Application:	Western Blotting (WB), ELISA, Immunohistochemistry (IHC), Immunofluorescence (IF)

Product Details

Immunogen:	Recombinant Human Calcineurin B homologous protein 1 protein (2-195AA)
Isotype:	IgG
Cross-Reactivity:	Human, Mouse, Rat
Purification:	>95%, Protein G purified

Target Details

Target:	CHP
Alternative Name:	CHP1 (CHP Products)
Background:	Background: Calcium-binding protein involved in different processes such as regulation of vesicular trafficking, plasma membrane Na(+)/H(+) exchanger and gene transcription. Involved

Target Details

in the constitutive exocytic membrane traffic. Mediates the association between microtubules and membrane-bound organelles of the endoplasmic reticulum and Golgi apparatus and is also required for the targeting and fusion of transcytotic vesicles (TCV) with the plasma membrane. Functions as an integral cofactor in cell pH regulation by controlling plasma membrane-type Na(+)/H(+) exchange activity. Affects the pH sensitivity of SLC9A1/NHE1 by increasing its sensitivity at acidic pH . Required for the stabilization and localization of SLC9A1/NHE1 at the plasma membrane. Inhibits serum- and GTPase-stimulated Na(+)/H(+) exchange. Plays a role as an inhibitor of ribosomal RNA transcription by repressing the nucleolar UBF1 transcriptional activity. May sequester UBF1 in the nucleoplasm and limit its translocation to the nucleolus. Associates to the ribosomal gene promoter. Acts as a negative regulator of the calcineurin/NFAT signaling pathway. Inhibits NFAT nuclear translocation and transcriptional activity by suppressing the calcium-dependent calcineurin phosphatase activity. Also negatively regulates the kinase activity of the apoptosis-induced kinase STK17B. Inhibits both STK17B auto- and substrate-phosphorylations in a calcium-dependent manner.

Aliases: Calcineurin B homolog antibody, Calcineurin B homologous protein antibody, Calcineurin homologous protein antibody, Calcineurin like EF hand protein 1 antibody, Calcium binding protein CHP antibody, Calcium binding protein p22 antibody, Calcium-binding protein CHP antibody, Calcium-binding protein p22 antibody, chp antibody, CHP1_HUMAN antibody, Sid 470 antibody, Sid470 antibody, SLC9A1 binding protein antibody, SLC9A1BP antibody, Wrch2 antibody

UniProt:	Q99653
Pathways:	Proton Transport , Regulation of Carbohydrate Metabolic Process , VEGF Signaling

Application Details

Application Notes:	Recommended dilution: WB:1:500-1:5000, IHC:1:500-1:1000, IF:1:50-1:500,
Restrictions:	For Research Use only

Handling

Format:	Liquid
Buffer:	Preservative: 0.03 % Proclin 300 Constituents: 50 % Glycerol, 0.01M PBS, pH 7.4
Preservative:	ProClin
Precaution of Use:	This product contains ProClin: a POISONOUS AND HAZARDOUS SUBSTANCE which should be

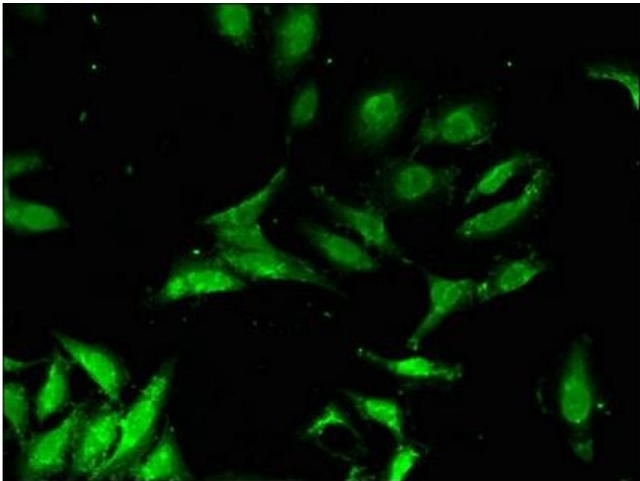
Handling

handled by trained staff only.

Storage: -20 °C,-80 °C

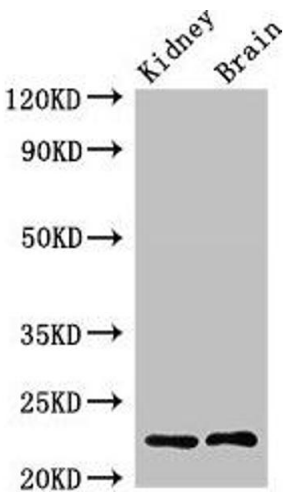
Storage Comment: Upon receipt, store at -20°C or -80°C. Avoid repeated freeze.

Images



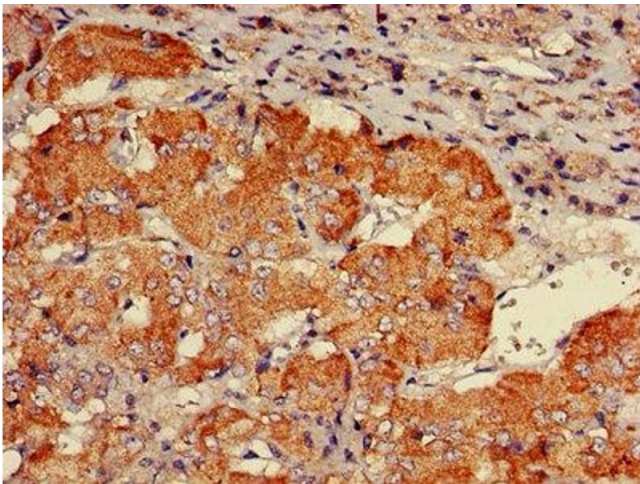
Immunofluorescence

Image 1. Immunofluorescent analysis of Hela cells using ABIN7146261 at dilution of 1:100 and Alexa Fluor 488-conjugated AffiniPure Goat Anti-Rabbit IgG(H+L)



Western Blotting

Image 2. Western Blot Positive WB detected in: Rat kidney tissue, Mouse brain tissue All lanes: CHP1 antibody at 2.4 µg/mL Secondary Goat polyclonal to rabbit IgG at 1/50000 dilution Predicted band size: 23 kDa Observed band size: 23 kDa



Immunohistochemistry

Image 3. IHC image of ABIN7146261 diluted at 1:600 and staining in paraffin-embedded human adrenal gland tissue performed on a Leica Bond™ system. After dewaxing and hydration, antigen retrieval was mediated by high pressure in a citrate buffer (pH 6.0). Section was blocked with 10 % normal goat serum 30 min at RT. Then primary antibody (1 % BSA) was incubated at 4 °C overnight. The primary is detected by a biotinylated secondary antibody and

visualized using an HRP conjugated SP system.