

Datasheet for ABIN7146297
anti-CALHM1 antibody (AA 202-346)[Go to Product page](#)

1 Image

Overview

Quantity:	100 µL
Target:	CALHM1
Binding Specificity:	AA 202-346
Reactivity:	Human
Host:	Rabbit
Clonality:	Polyclonal
Conjugate:	This CALHM1 antibody is un-conjugated
Application:	Western Blotting (WB), ELISA

Product Details

Immunogen:	Recombinant Human Calcium homeostasis modulator protein 1 protein (202-346AA)
Isotype:	IgG
Cross-Reactivity:	Human, Mouse
Purification:	Antigen Affinity Purified

Target Details

Target:	CALHM1
Alternative Name:	CALHM1 (CALHM1 Products)
Background:	Background: Pore-forming subunit of a voltage-gated ion channel required for sensory perception of sweet, bitter and umami tastes. Specifically present in type II taste bud cells,

Target Details

where it plays a central role in sweet, bitter and umami taste perception by inducing ATP release from the cell, ATP acting as a neurotransmitter to activate afferent neural gustatory pathways. Acts both as a voltage-gated and calcium-activated ion channel: mediates neuronal excitability in response to changes in extracellular Ca²⁺ concentration. Has poor ion selectivity and forms a wide pore (around 14 Angstroms) that mediates permeation of Ca²⁺, Na⁺ and K⁺, as well as permeation of monovalent anions. Acts as an activator of the ERK1 and ERK2 cascade. Triggers endoplasmic reticulum stress by reducing the calcium content of the endoplasmic reticulum. May indirectly control amyloid precursor protein (APP) proteolysis and aggregated amyloid-beta (Aβ) peptides levels in a Ca²⁺ dependent manner.

Aliases: CAHM1_HUMAN antibody, Calcium homeostasis modulator 1 antibody, Calcium homeostasis modulator protein 1 antibody, CALHM1 antibody, FAM26C antibody, Family with sequence similarity 26, member C antibody, MGC39514 antibody, MGC39617 antibody, OTTHUMP00000020413 antibody, Protein FAM26C antibody

UniProt: [Q8IU99](#)

Application Details

Application Notes: Recommended dilution: WB:1:500-1:5000,

Restrictions: For Research Use only

Handling

Format: Liquid

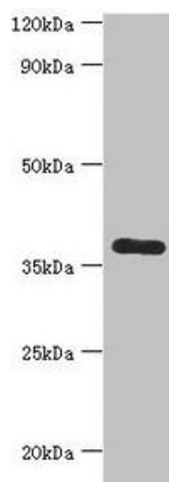
Buffer: PBS with 0.02 % sodium azide, 50 % glycerol, pH 7.3.

Preservative: Sodium azide

Precaution of Use: This product contains Sodium azide: a POISONOUS AND HAZARDOUS SUBSTANCE which should be handled by trained staff only.

Storage: -20 °C, -80 °C

Storage Comment: Upon receipt, store at -20°C or -80°C. Avoid repeated freeze.



Western Blotting

Image 1. Western blot All lanes: Calcium homeostasis modulator protein 1 antibody at 7 µg/mL + Mouse liver tissue Secondary Goat polyclonal to rabbit IgG at 1/10000 dilution Predicted band size: 38 kDa Observed band size: 38 kDa