



[Go to Product page](#)

Datasheet for ABIN7146318

## anti-CCDC109B antibody (Regulatory Subunit)

### 2 Images

#### Overview

Quantity:	100 µg
Target:	CCDC109B
Binding Specificity:	AA 89-219, Regulatory Subunit
Reactivity:	Human
Host:	Rabbit
Clonality:	Polyclonal
Conjugate:	This CCDC109B antibody is un-conjugated
Application:	ELISA, Immunohistochemistry (IHC), Immunofluorescence (IF)

#### Product Details

Immunogen:	Recombinant Human Calcium uniporter regulatory subunit MCUB, mitochondrial protein (89-219AA)
Isotype:	IgG
Cross-Reactivity:	Human
Purification:	Antigen Affinity Purified

#### Target Details

Target:	CCDC109B
Alternative Name:	MCUB ( <a href="#">CCDC109B Products</a> )
Background:	Background: Negatively regulates the activity of MCU, the mitochondrial inner membrane

## Target Details

---

calcium uniporter, and thereby modulates calcium uptake into the mitochondrion. Does not form functional calcium channels by itself. Mitochondrial calcium homeostasis plays key roles in cellular physiology and regulates cell bioenergetics, cytoplasmic calcium signals and activation of cell death pathways.

Aliases: MCUB antibody, CCDC109B Calcium uniporter regulatory subunit MCub antibody, mitochondrial antibody, MCUb antibody, Coiled-coil domain-containing protein 109B antibody

UniProt: [Q9NWR8](#)

## Application Details

---

Application Notes: Recommended dilution: IHC:1:20-1:200, IF:1:50-1:200,

Restrictions: For Research Use only

## Handling

---

Format: Liquid

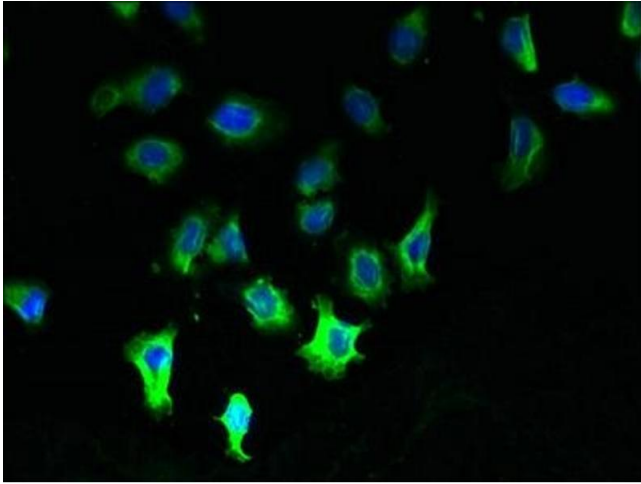
Buffer: Preservative: 0.03 % Proclin 300  
Constituents: 50 % Glycerol, 0.01M PBS, PH 7.4

Preservative: ProClin

Precaution of Use: This product contains ProClin: a POISONOUS AND HAZARDOUS SUBSTANCE which should be handled by trained staff only.

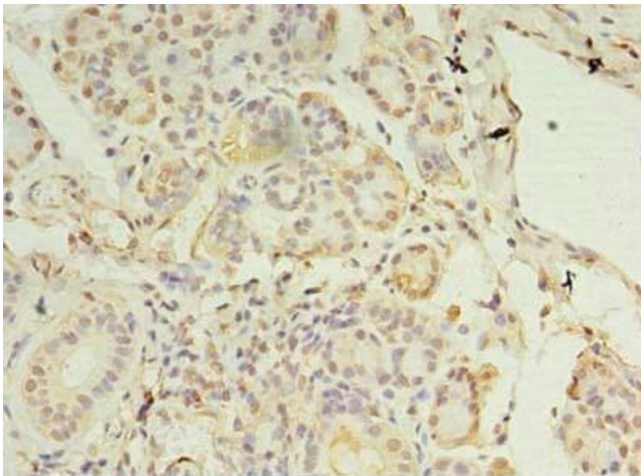
Storage: -20 °C, -80 °C

Storage Comment: Upon receipt, store at -20°C or -80°C. Avoid repeated freeze.



#### Immunofluorescence

**Image 1.** Immunofluorescent analysis of A549 cells using ABIN7146318 at dilution of 1:100 and Alexa Fluor 488-conjugated AffiniPure Goat Anti-Rabbit IgG(H+L)



#### Immunohistochemistry

**Image 2.** Immunohistochemistry of paraffin-embedded human pancreatic tissue using ABIN7146318 at dilution of 1:100