

Datasheet for ABIN7146330  
**anti-CLCA1 antibody (AA 715-785)**[Go to Product page](#)

## 2 Images

## Overview

Quantity:	100 µg
Target:	CLCA1
Binding Specificity:	AA 715-785
Reactivity:	Human
Host:	Rabbit
Clonality:	Polyclonal
Conjugate:	This CLCA1 antibody is un-conjugated
Application:	ELISA, Immunohistochemistry (IHC)

## Product Details

Immunogen:	Recombinant Human Calcium-activated chloride channel regulator 1 protein (715-785AA)
Isotype:	IgG
Cross-Reactivity:	Human
Purification:	>95%, Protein G purified

## Target Details

Target:	CLCA1
Alternative Name:	CLCA1 ( <a href="#">CLCA1 Products</a> )
Background:	Background: May be involved in mediating calcium-activated chloride conductance. May play critical roles in goblet cell metaplasia, mucus hypersecretion, cystic fibrosis and AHR. May be

## Target Details

involved in the regulation of mucus production and/or secretion by goblet cells. Involved in the regulation of tissue inflammation in the innate immune response. May play a role as a tumor suppressor. Induces MUC5AC.

Aliases: CaCC antibody, CaCC-1 antibody, CACC1 antibody, Calcium dependent chloride channel 1 antibody, Calcium-activated chloride channel family member 1 antibody, Calcium-activated chloride channel protein 1 antibody, Calcium-activated chloride channel regulator 1 antibody, Chloride channel calcium activated family member 1 antibody, Chloride channel regulator 1 antibody, CLCA family member 1 chloride channel regulator antibody, CLCA1 antibody, CLCA1\_HUMAN antibody, CLCRG1 antibody, GOB5 antibody, hCaCC-1 antibody, hCLCA1 antibody

UniProt: [A8K7I4](#)

## Application Details

Application Notes: Recommended dilution: IHC:1:20-1:200,

Restrictions: For Research Use only

## Handling

Format: Liquid

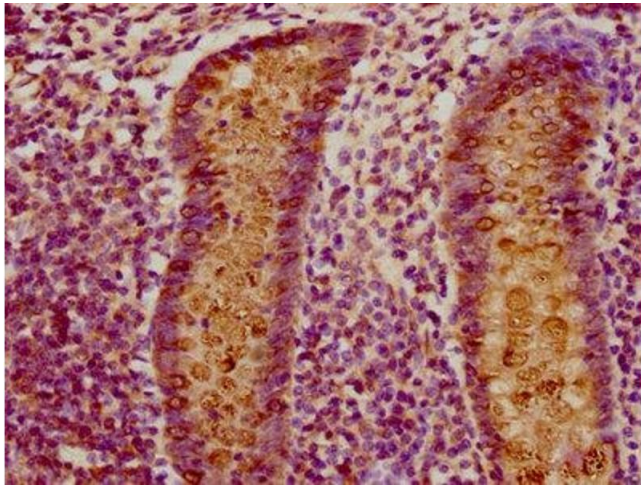
Buffer: Preservative: 0.03 % Proclin 300  
Constituents: 50 % Glycerol, 0.01M PBS, pH 7.4

Preservative: ProClin

Precaution of Use: This product contains ProClin: a POISONOUS AND HAZARDOUS SUBSTANCE which should be handled by trained staff only.

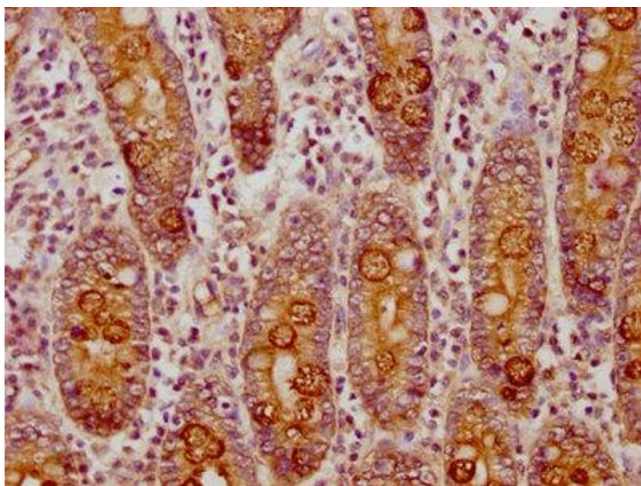
Storage: -20 °C,-80 °C

Storage Comment: Upon receipt, store at -20°C or -80°C. Avoid repeated freeze.



#### Immunohistochemistry

**Image 1.** IHC image of ABIN7146330 diluted at 1:150 and staining in paraffin-embedded human appendix tissue performed on a Leica Bond™ system. After dewaxing and hydration, antigen retrieval was mediated by high pressure in a citrate buffer (pH 6.0). Section was blocked with 10 % normal goat serum 30 min at RT. Then primary antibody (1 % BSA) was incubated at 4 °C overnight. The primary is detected by a biotinylated secondary antibody and visualized using an HRP conjugated SP system.



#### Immunohistochemistry

**Image 2.** IHC image of ABIN7146330 diluted at 1:150 and staining in paraffin-embedded human small intestine tissue performed on a Leica Bond™ system. After dewaxing and hydration, antigen retrieval was mediated by high pressure in a citrate buffer (pH 6.0). Section was blocked with 10 % normal goat serum 30 min at RT. Then primary antibody (1 % BSA) was incubated at 4 °C overnight. The primary is detected by a biotinylated secondary antibody and visualized using an HRP conjugated SP system.